



# LCD TV

---

## OWNER'S MANUAL

MODEL: 32LP1DC




Internet Home Page : <http://www.lgcommercial.com>


**Please read this manual carefully before operating your set.  
Retain it for future reference.  
Record model number and serial number of the set.  
See the label attached on the back cover and quote  
this information to your dealer  
when you require service.**

P/NO : 3828TUL309C (0502-REV01)  
Printed in Korea


# Warning




**CAUTION**  
RISK OF ELECTRIC SHOCK  
DO NOT OPEN



**WARNING:**  
TO REDUCE THE RISK OF ELECTRIC SHOCK DO NOT REMOVE COVER (OR BACK). NO USER SERVICEABLE PARTS INSIDE. REFER TO QUALIFIED SERVICE PERSONNEL.



The lightning flash with arrowhead symbol, within an equilateral triangle, is intended to alert the user to the presence of uninsulated "dangerous voltage" within the product's enclosure that may be of sufficient magnitude to constitute a risk of electric shock to persons.



The exclamation point within an equilateral triangle is intended to alert the user to the presence of important operating and maintenance (servicing) instructions in the literature accompanying the appliance.

**NOTE TO CABLE/TV INSTALLER:**

This reminder is provided to call the CATV system installer's attention to Article 820-40 of the National Electric Code (U.S.A.). The code provides guidelines for proper grounding and, in particular, specifies that the cable ground shall be connected to the grounding system of the building, as close to the point of the cable entry as practical.

**REGULATORY INFORMATION**

This equipment has been tested and found to comply with the limits for a Class B digital device, pursuant to Part 15 of the FCC Rules. These limits are designed to provide reasonable protection against harmful interference in a residential installation. This equipment generates, uses and can radiate radio frequency energy and, if not installed and used in accordance with the instructions, may cause harmful interference to radio communications. However, there is no guarantee that interference will not occur in a particular installation. If this equipment does cause harmful interference to radio or television reception, which can be determined by turning the equipment off and on, the user is encouraged to try to correct the interference by one or more of the following measures:

- Reorient or relocate the receiving antenna.
- Increase the separation between the equipment and receiver.
- Connect the equipment into an outlet on a circuit different from that to which the receiver is connected.
- Consult the dealer or an experienced radio/TV technician for help.

Any changes or modifications not expressly approved by the party responsible for compliance could void the user's authority to operate the equipment.

**CAUTION:**

Do not attempt to modify this product in any way without written authorization from LG Electronics Corporation. Unauthorized modification could void the user's authority to operate this product.

**U.S.A. only -----**

**COMPLIANCE:**

The responsible party for this product's compliance is:  
LG Electronics U.S.A., Inc.  
1000 Sylvan Avenue, Englewood Cliffs, NJ 07632  
Phone: 1-201-816-2000  
<http://www.lgusa.com>

-----

# Safety Instructions

## WARNING :

To Reduce The Risk Of Fire Or Electric Shock, Do Not Expose This Apparatus To Rain Or Moisture.

Apparatus shall not be exposed to dripping or splashing and no objects filled with liquids, such as vases, shall be placed on the apparatus.

## IMPORTANT SAFETY INSTRUCTIONS

1. Read these instructions.

2. Keep these instructions.

3. Heed all warnings.

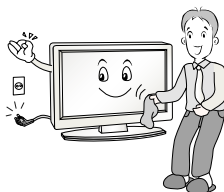
4. Follow all instructions.



5. Do not use this apparatus near water.



6. Clean only with a dry cloth.



7. Do not block any of the ventilation openings. Install in accordance with the manufacturer's instructions.

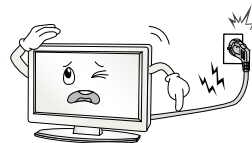


8. Do not install near any heat sources such as radiators, heat registers, stoves, or other apparatus (including amplifiers) that produce heat.



9. Do not defeat the safety purpose of the polarized or grounding type plug. A polarized plug has two blades with one wider than the other. A grounding type plug has two blades and a third grounding prong. The wide blade or the third prong is provided for your safety. When the provided plug does not fit into your outlet, consult an electrician for replacement of the obsolete outlet.

10. Protect the power cord from being walked on or pinched particularly at plugs, convenience receptacles, and the point where they exit from the apparatus.



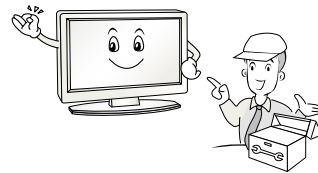
11. Only use the attachments / accessories specified by the manufacturer.

## Safety Instructions continued

12. Use only with a cart, stand, tripod, bracket, or table specified by the manufacturer, or sold with the apparatus. When a cart is used, use caution when moving the cart / apparatus combination to avoid injury from tip-over.



14. Refer all servicing to qualified service personnel. Servicing is required when the apparatus has been damaged in any way, such as power supply cord or plug is damaged, liquid has been spilled or objects have fallen into the apparatus, the apparatus has been exposed to rain or moisture, does not operate normally, or has been dropped.



13. Unplug this apparatus during lightning storms or when unused for long periods of time.



### Note

- If the TV feels cold to the touch, there may be a small “flicker” when when it is turned on. This is normal, there is nothing wrong with TV.
- Some minute dot defects may be visible on the screen, appearing as tiny red, green, or blue spots. However, they have no adverse effect on the monitor's performance.
- Avoid touching the LCD screen or holding your finger(s) against it for long periods of time. Doing so may produce some temporary distortion effects on the screen.

### CAUTION concerning the Power Cord

Most appliances recommend they be placed upon a dedicated circuit; that is, a single outlet circuit which powers only that appliance and has no additional outlets or branch circuits. Check the specification page of this owner's manual to be certain.

Do not overload wall outlets. Overloaded wall outlets, loose or damaged wall outlets, extension cords, frayed power cords, or damaged or cracked wire insulation are dangerous. Any of these conditions could result in electric shock or fire. Periodically examine the cord of your appliance, and if its appearance indicates damage or deterioration, unplug it, discontinue use of the appliance, and have the cord replaced with an exact replacement part by an authorized servicer.

Protect the power cord from physical or mechanical abuse, such as being twisted, kinked, pinched, closed in a door, or walked upon. Pay particular attention to plugs, wall outlets, and the point where the cord exits the appliance.

### On Disposal

- a. The fluorescent lamp used in this product contains a small amount of mercury.
- b. Do not dispose of this product with general household waste.  
Disposal of this product must be carried out in accordance to the regulations of your local authority.

# Contents

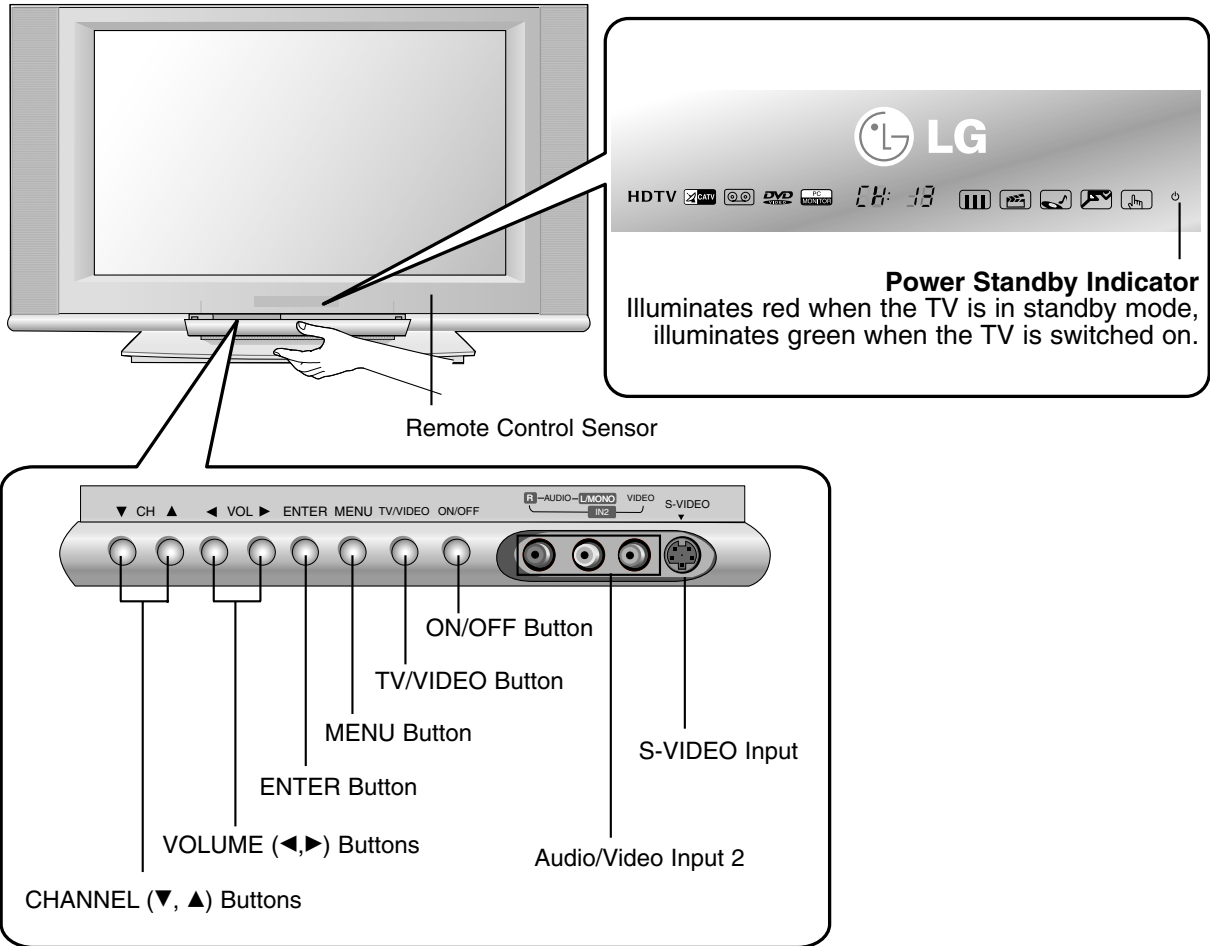
<b>Introduction</b>		<b>2 Warnings</b>
		<b>3~4 Safety Instructions</b>
		<b>7 Controls</b>
		<b>8 Connection Options</b>
		<b>9~11 Remote Control Key Functions</b>
<b>Installation</b>	Installation Instruction	12 Various Installation
	External Equipment Connections	13 How to use back cover 13 Swivel Stand
<b>Operation</b>	Screen Setup for PC mode	14 Antenna Connection
	Basic operation	15 External AV Source Setup
		15 Digital Audio Output
		16 VCR Setup
		17 Cable TV Setup
		18 DVD Setup
	Setup Menu Options	19 HDSTB Setup
		20~21 PC Setup
		21 Power Cord Connection
	Video Menu Options	22 Adjustments for screen Position, Clock, and Phase
22 Initializing (Reset to original factory values)		
23 Turning on the TV		
Audio Menu Options	23 Volume Adjustment	
	23 Channel Selection	
	23 On-screen Menu Language Selection	
	24 Screen Menu Selection and Adjustment	
	25 EZ Scan (Channel Search)	
	26 Channel Edit	
	27 DTV Signal Strength	
27 Channel Label Setup		
28 Main Picture Source Selection		
28 Front LED (Light Emitting Diode) Display		
29 EZ Picture		
29 Manual Picture Control (EZ Picture-Off Option)		
30 XD Function		
30 Color Temperature Control		
31 Video Preset		
32 Audio Language		
32 EZ SoundRite		
33 EZ Sound		
33 Manual Sound Control (EZ Sound-Off Option)		
34 Stereo/SAP Broadcasts Setup		
34 Front Surround		
35 TV Speakers On/Off Setup		

<b>Operation</b>	<b>Time Menu Options</b>	36	Auto Clock Setup
		36	Manual Clock Setup
		37	On/Off Timer Setup
		37	Sleep Timer
		38	Auto Off
	<b>Option Menu Features</b>	39	Aspect Ratio Control
		40	Caption
		40	Caption Option
		41	Caption Mode
		42	Cinema Mode Setup
		42	Demo (Review)
		43	Split Zoom
	<b>Lock Menu Options</b>	44~45	Parental Lock Setup
	<b>PIP (Picture-in-Picture)/Twin Picture</b>	46	Watching PIP/Twin Picture
		46	Selecting an Input Signal Source for PIP/Twin Picture
		46	TV Program Selection for PIP
		47	Moving the PIP sub picture
		47	Adjusting Main and Sub Picture Sizes for Twin Picture
		47	Swapping PIP/Twin Picture
<b>Reference</b>		<b>48~53</b>	<b>External Control Device Setup</b>
		<b>54</b>	<b>Programming the Remote Control</b>
		<b>55~56</b>	<b>Programming Codes</b>
		<b>57~58</b>	<b>Troubleshooting Checklist</b>
		<b>59</b>	<b>Maintenance</b>
		<b>59</b>	<b>Product Specifications</b>

# Introduction

## Controls

- This is a simplified representation of front panel.
- Here shown may be somewhat different from your TV.

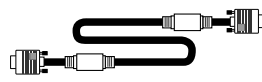


## Accessories

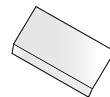
Ensure that the following accessories are included with your TV. If any accessory is missing, please contact the dealer from where you purchased the product.



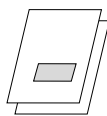
Power Cord



D-sub 15 pin Cable



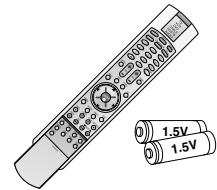
6 Shield Foams



Owner's Manual  
/ Commercial Interface Control Box Manual

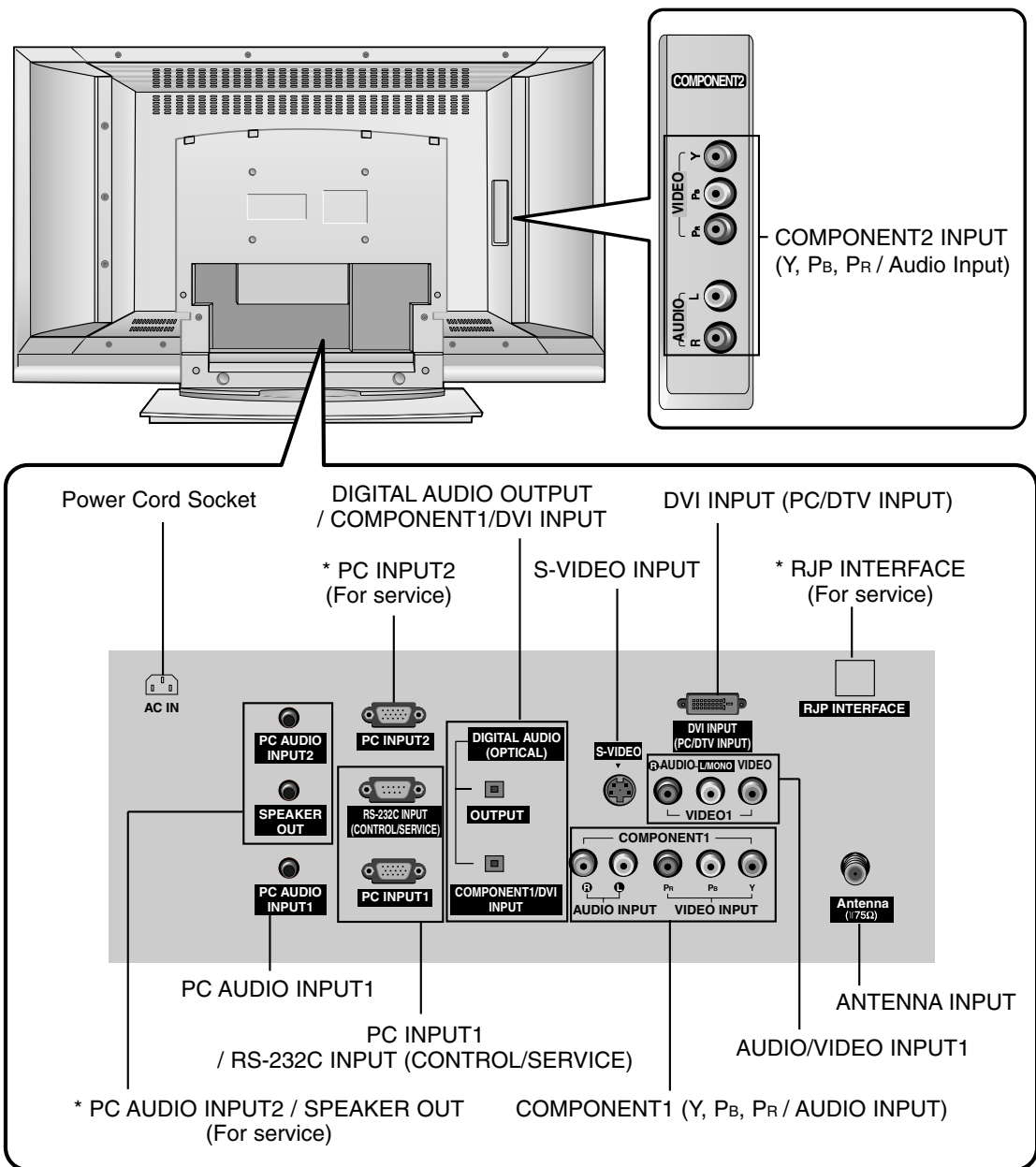


Tie Band  
Arrange the wires with the tie band.



Remote Control /  
AA Batteries

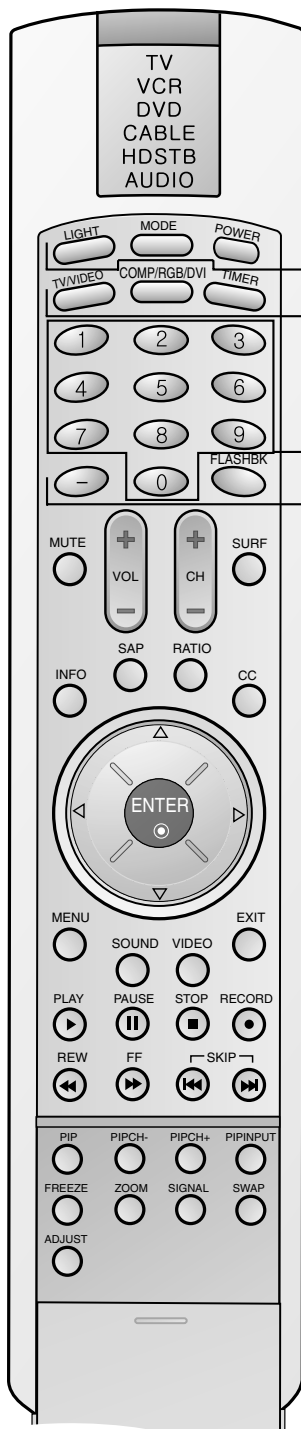
# Connection Options



\* For Service Jacks: PC INPUT2, PC AUDIO INPUT2, SPEAKER OUT, and RJP INTERFACE  
Be careful not to use this jack. Just contact your dealer or service center.



# Remote Control Key Functions



## LIGHT

Illuminates the remote control buttons.

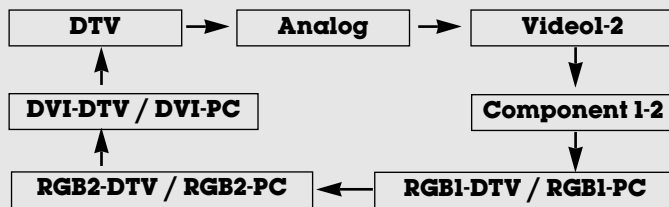
## MODE

Selects the remote operating mode: TV, VCR, DVD, CABLE, HDSTB or AUDIO. Select other operating modes, for the remote to operate external devices.

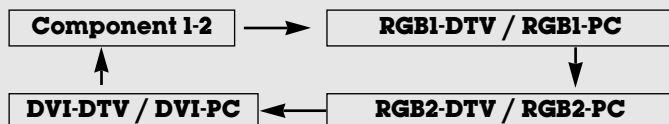
## POWER

Turns your TV or any other programmed equipment on or off, depending on mode.

## TV/VIDEO Selects:



## COMP/RGB/DVI Selects:



## TIMER

Lets you select the amount of time before your TV turns itself off automatically. (Refer to p.37)

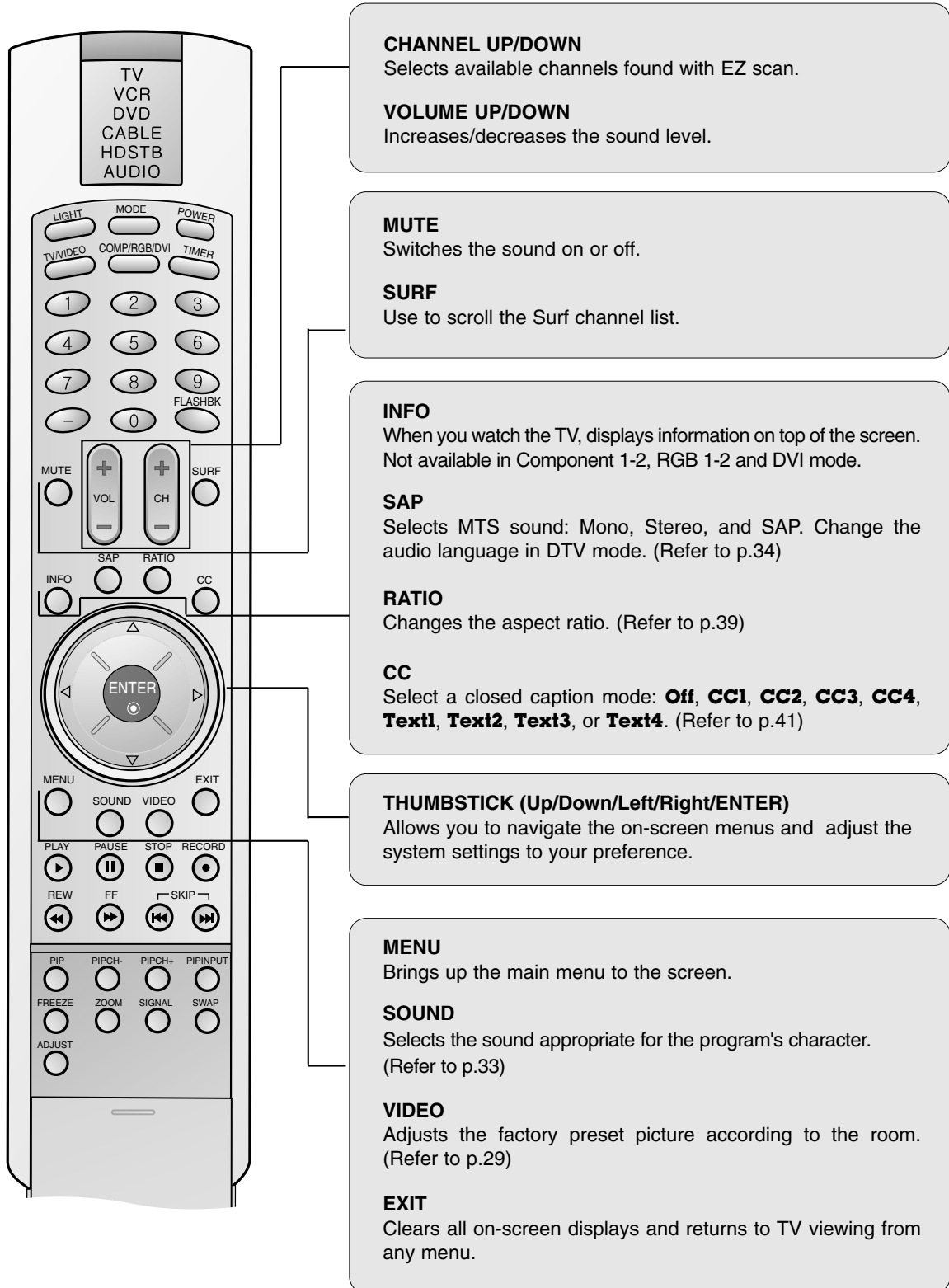
## NUMBER buttons

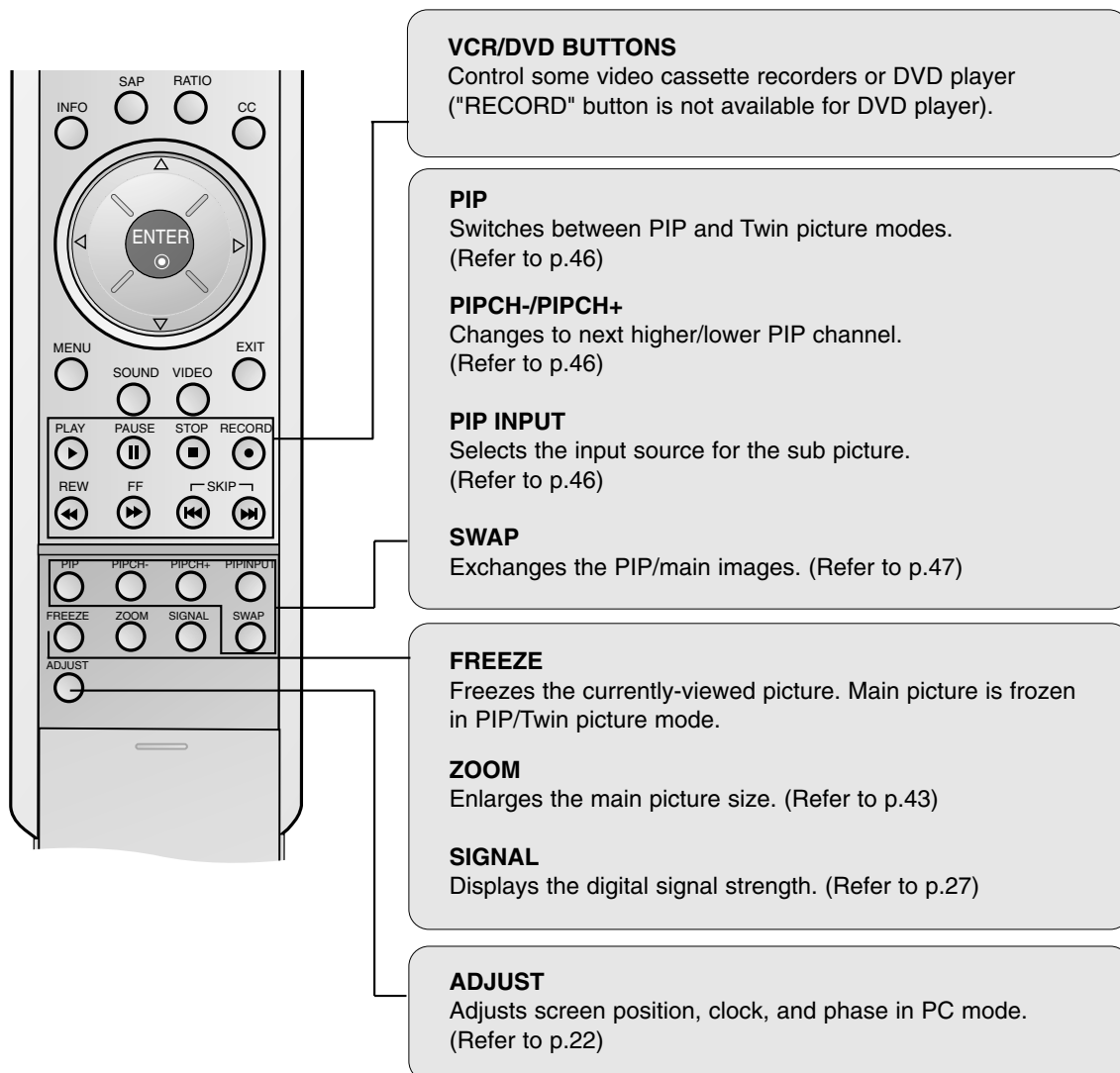
## — (DASH)

Used to enter a program number for multiple program channels such as 2-1, 2-2, etc.

## FLASHBK

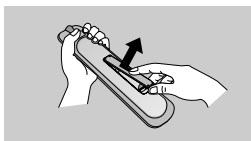
Return to the last channel viewed.



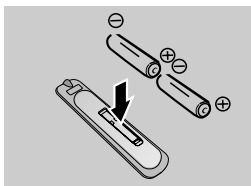


## Installing Batteries

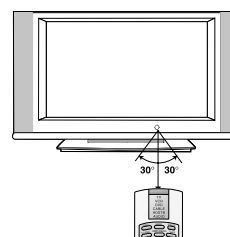
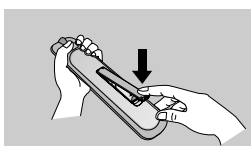
- 1** Open the battery compartment cover on the back side.



- 2** Insert two 1.5V AA size batteries in correct polarity (+ with +, - with -). Don't mix old or used batteries with new ones.



- 3** Close the cover.



\* Point the remote towards the remote control sensor of the wireless TV and use it within about 7 meters.

\* Put the used batteries into the recycling bin since it can negatively affect the environment.

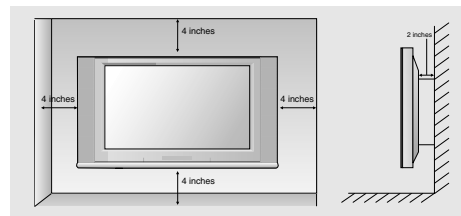
# Installation

## Various Installation

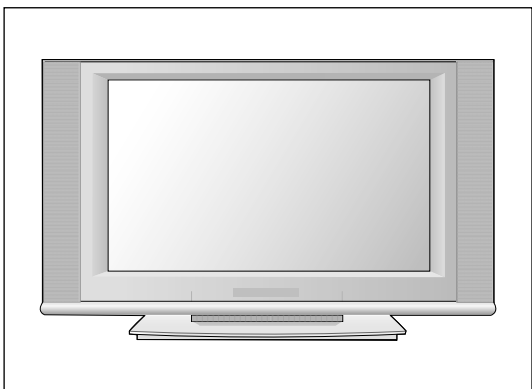
### Wall Mount: Horizontal installation



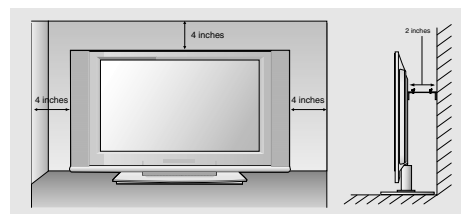
For proper ventilation, allow a clearance of 4" on each side and 2" from the wall. Detailed installation instructions are available from your dealer, see the optional Tilt Wall Mounting Bracket Installation and Setup Guide.



### Desktop Pedestal Installation

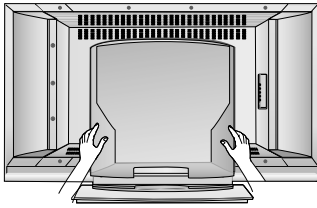


For proper ventilation, allow a clearance of 4" on each side and the top, and 2" from the wall.

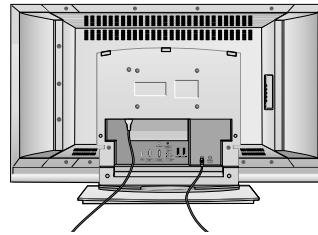


## How to use back cover

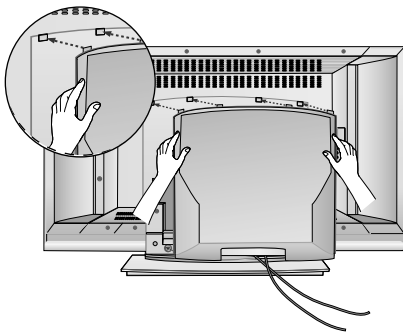
- 1** Hold the back cover with both hands and pull it backward.



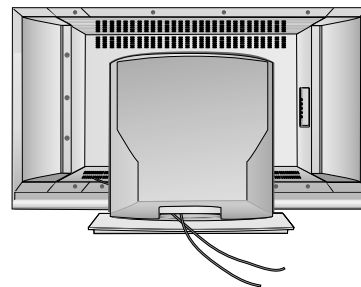
- 2** Install wires as necessary.  
(To install various wires, refer to p.14~21.)



- 3** Align the holes on the TV back panel with the four protuberance on the back cover and insert.



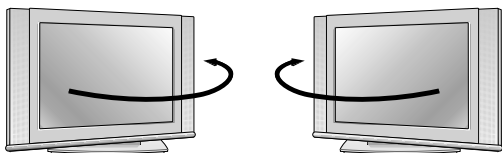
- 4** Reinstall the cover.



### Wire Arrangement

- Pull the cables through the hole on the set.

## Swivel Stand

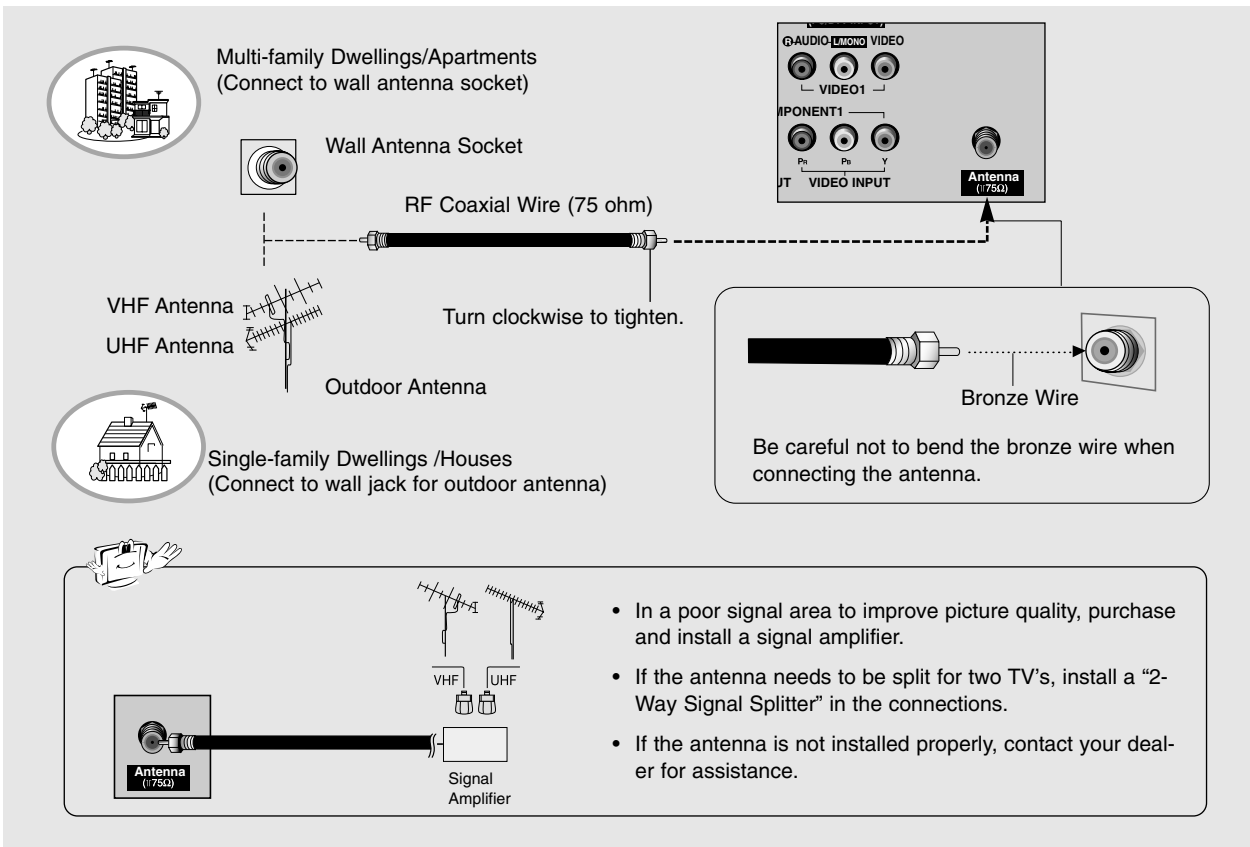


- The TV can be conveniently swivelled on its stand 90° to the left or right to provide the optimum viewing angle.

# External Equipment Connections

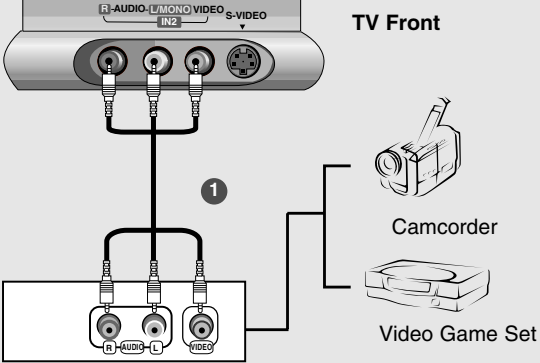
## Antenna Connection

- Antenna or Cable Service without a Cable Box Connections.
- For optimum picture quality, adjust antenna direction if needed.



**NOTE:** If you are not sure of the type of signal(s) you are receiving, let EZ Scan complete all the channel signal-type searches. The TV will let you know when the analog, cable, and digital channel scans are complete.

## External AV Source Setup

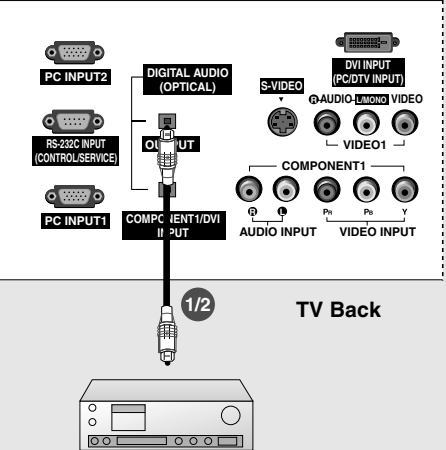


The diagram shows the front panel of a TV with three AV input jacks labeled 'R-AUDIO', 'L-AUDIO', and 'VIDEO'. A separate box below shows the corresponding output jacks from a 'Camcorder' or 'Video Game Set'. A line with a circled '1' indicates the connection between the TV's input jacks and the external equipment's output jacks.

- 1 Connect the **AUDIO/VIDEO** jacks between TV and external equipment. Match the jack colours (Video = yellow, Audio Left = white, and Audio Right = red).
- 2 Select **Video 2** input source with using the **TV/VIDEO** button on the remote control.  
- If connected to VIDEO1 input (the back side), select **Video 1** input source.
- 3 Operate the corresponding external equipment. Refer to external equipment operating guide.


## Digital Audio Output

- Send the TV's audio to external audio equipment (stereo system) via the Digital Audio Output Optical port.



The diagram shows the back panel of a TV with various input and output ports. A 'DIGITAL AUDIO (OPTICAL) OUTPUT' port is highlighted. A line with a circled '1/2' indicates the connection of an optical cable from this port to an external audio device. Other visible ports include PC INPUT1/2, RS-232C INPUT, COMPONENT1/DVI II INPUT, S-VIDEO, DVI INPUT (PC/DVI INPUT), AUDIO INPUT, VIDEO1, and VIDEO INPUT.

- 1 Connect one end of an optical cable to the TV Digital Audio Optical Output port.
- 2 Connect the other end of the optical cable to the digital audio optical input on the audio equipment.
- 3 Set the "**TV Speaker** option - **Off**" in the AUDIO menu. Refer to page 35. See the external audio equipment instruction manual for operation.



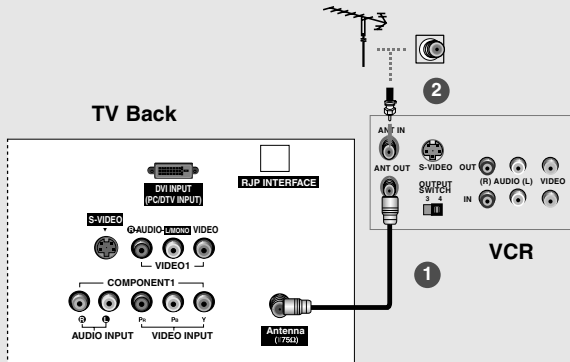
**CAUTION**  
Do not look into the optical output port. Looking at the laser beam may damage your vision.

**NOTE: All cables shown are not included with the TV.**

## VCR Setup

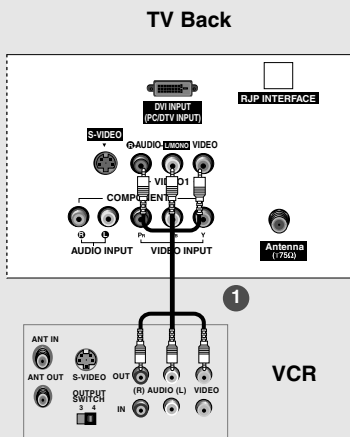
- To avoid picture noise (interference), leave an adequate distance between the VCR and TV.
- Typically a frozen still picture from a VCR. If the 4:3 picture format is used; the fixed images on the sides of the screen may remain visible on the screen.

### When connecting with an antenna



- 1 Connect the RF antenna out socket of the VCR to the **Antenna** socket on the set.
- 2 Connect the antenna cable to the RF antenna in socket of the VCR.
- 3 Set VCR output switch to 3 or 4 and then tune TV to the same channel number.
- 4 Insert a video tape into the VCR and press PLAY on the VCR. (Refer to the VCR owner's manual.)

### When connecting with a RCA cable

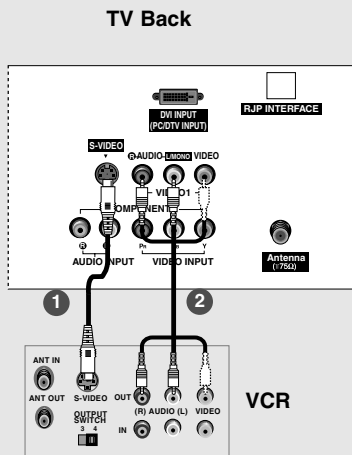


- 1 Connect the **AUDIO/VIDEO** jacks between TV and VCR. Match the jack colors (Video = yellow, Audio Left = white, and Audio Right = red)
- 2 Insert a video tape into the VCR and press PLAY on the VCR. (Refer to the VCR owner's manual.)
- 3 Select **Video1** input source with using the **TV/VIDEO** button on the remote control.
  - If connected to IN 2 input (TV front), select **Video2** input source.



• If you have a mono VCR, connect the audio cable from the VCR to the **AUDIO L/MONO** jack of the set.

### When connecting with an S-Video cable



- 1 Connect the an S-VIDEO output of the VCR to the S-VIDEO input on the set. The picture quality is improved; compared to connecting a regular VCR to the Video input.
- 2 Connect the audio outputs of the VCR to the **AUDIO** input jacks on the set.
- 3 Insert a video tape into the VCR and press PLAY on the VCR. (Refer to the VCR owner's manual.)
- 4 Select **Video 1** input source with using the **TV/VIDEO** button on the remote control.
  - If connected to IN2 input (TV front), select **Video2** input source.



Do not connect to both Video and S-Video at the same time.

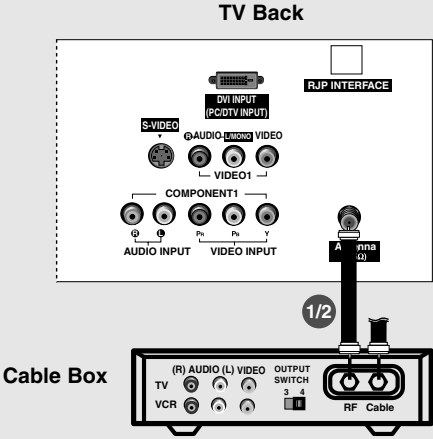


## Cable TV Setup

- After subscribing to a cable TV service from a local provider and installing a converter, you can watch cable TV programming. The TV cannot display TV programming unless a TV tuner device or cable TV converter box is connected to the TV.
- For further information regarding cable TV service, contact your local cable TV service provider(s).

### When connecting with an antenna

**TV Back**

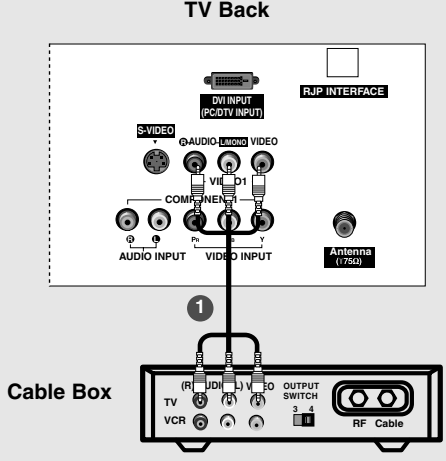


**Cable Box**

- 1 Connect the RF antenna socket of the cable box to the **Antenna** socket on the set.
- 2 Connect the antenna cable to the RF antenna socket of the cable box.
- 3 Select 3 or 4 with channel switch on the cable box.
- 4 Tune the TV channel to the same selected output channel on the cable box.
- 5 Select channels at the cable box or with the cable box remote control.

### When connecting with a RCA cable

**TV Back**



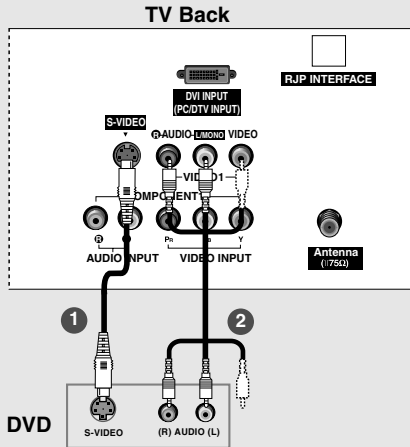
**Cable Box**

- 1 Connect the **AUDIO/VIDEO** jacks between TV and VCR. Match the jack colors (Video = yellow, Audio Left = white, and Audio Right = red)
- 2 Select **Video1** input source with using the **TV/VIDEO** button on the remote control.  
- If connected to IN 2 input (TV front), select **Video2** input source.
- 3 Select your desired channel with the remote control for the cable box.

**NOTE:** All cables shown are not included with the TV

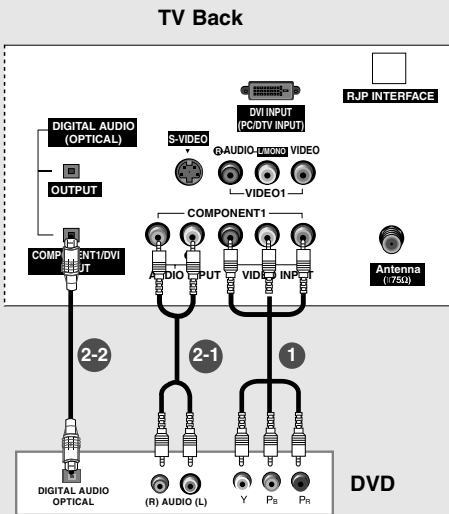
## DVD Setup

### When connecting with a S-Video cable



- 1 Connect the S-VIDEO output of the DVD to the **S-VIDEO** input on the set.
- 2 Connect the audio outputs of the DVD to the **AUDIO** input jacks on the set.
- 3 Turn on the DVD player, insert a DVD.
- 4 Select **Video1** input source with using the **TV/VIDEO** button on the remote control.  
- If connected to IN 2 input (TV front), select **Video 2** input source.
- 5 Refer to the DVD player's manual for operating instructions.

### When connecting with a component cable



- 1 Connect the video outputs (Y, Pb, Pr) of the DVD to the **COMPONENT1 VIDEO (Y, Pb, Pr)** jacks on the set.
- 2-1 Connect the audio outputs of the DVD to the **COMPONENT1 AUDIO** jacks on the set.
- 2-2 Connect the optical audio output of the DVD to the **DIGITAL AUDIO COMPONENT1/DVI INPUT** jack on the set.
- 3 Turn on the DVD player, insert a DVD.
- 4 Select **Component 1** input source with using the **TV/VIDEO** or **COMP/RGB/DVI** button on the remote control.  
- If connected to COMPONENT2 (TV side), select **Component 2** input source.
- 5 Refer to the DVD player's manual for operating instructions.

Select **2-1** or **2-2**, depending on your DVD connector.



**Component Input ports**

To get better picture quality, connect a DVD player to the component input ports as shown below.

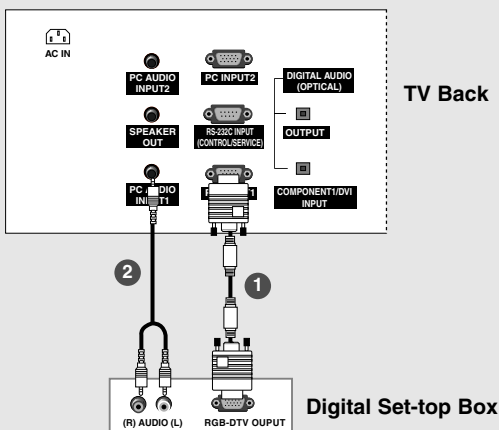
Component ports on the TV	Y	P <sub>B</sub>	P <sub>R</sub>
Video output ports on DVD player	Y	P <sub>b</sub>	P <sub>r</sub>
	Y	B-Y	R-Y
	Y	Cb	Cr
	Y	P <sub>B</sub>	P <sub>R</sub>

- Digital Audio will not work for Component 2 input source.
- Digital Audio operation has priority if Digital Audio and AUDIO L/R are connected at the same time.

## HDSTB Setup

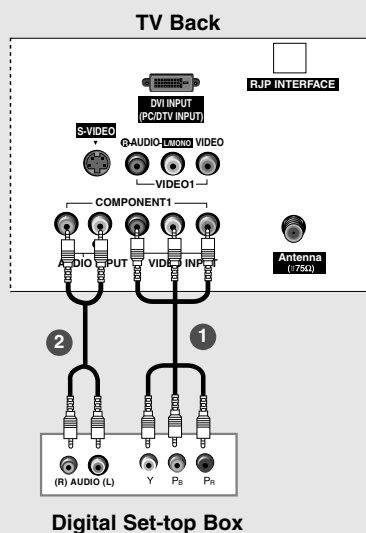
- This TV can receive Digital Over-the-air/Cable signals without an external digital set-top box. However, if you do receive Digital signals from a digital set-top box or other digital external device, refer to the figure as shown below.

### When connecting with a D-sub 15 pin cable



- 1 Connect the RGB output of the digital set-top box to the **PC INPUT1** jack on the set.
- 2 Connect the audio outputs of the set-top box to the **PC AUDIO INPUT1** jack on the set.
- 3 Turn on the digital set-top box. (Refer to the owner's manual for the digital set-top box.)
- 4 Select **RGB1-DTV** input source with using the **TV/VIDEO** or **COMP/RGB/DVI** button on the remote control.

### When connecting with a Component cable

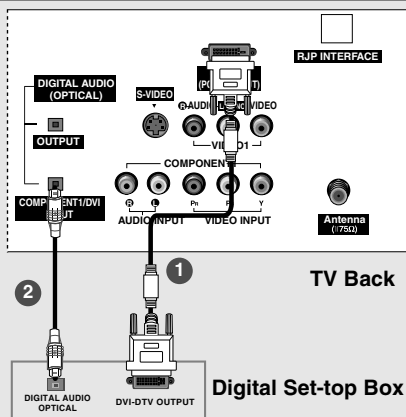


- 1 Connect the video outputs (Y, Pb, Pr) of the digital set-top box to the **COMPONENT1 VIDEO INPUT (Y, Pb, Pr)** jacks on the set.
- 2 Connect the audio outputs of the digital set-top box to the **COMPONENT1 AUDIO INPUT** jacks on the set.
- 3 Turn on the digital set-top box. (Refer to the owner's manual for the digital set-top box.)
- 4 Select **Component 1** input source with using the **TV/VIDEO** or **COMP/RGB/DVI** button on the remote control.  
- If connected to COMPONENT2 input (TV side), select **Component 2** input source.



Signal	Component1/2	RGB-DTV, DVI-DTV
480i	Yes	No
480p/720p/1080i	Yes	Yes

### When connecting with a DVI cable



- 1 Connect the DVI output of the digital set-top box to the **DVI INPUT (PC/DTV INPUT)** jack on the set.
- 2 Connect the digital audio outputs of the set-top box to the **DIGITAL AUDIO COMPONENT1/DVI INPUT** jack on the set.
- 3 Turn on the digital set-top box. (Refer to the owner's manual for the digital set-top box.)
- 4 Select **DVI-DTV** input source with using the **TV/VIDEO** or **COMP/RGB/DVI** button on the remote control.

## PC Setup

- This TV provides Plug and Play capability, meaning that the PC adjusts automatically to the TV's settings. The TV sends configuration information (EDID) to the PC using the Video Electronics Standard Association (VESA) Display Data Channel (DDC) protocol.

### When connecting with a D-sub 15 pin cable

- 1 Connect the RGB output of the PC to the **PC INPUT1** jack on the set.
- 2 Connect the PC audio outputs to the **PC AUDIO INPUT1** jack on the set.
- 3 Turn on the PC and the set.
- 4 Select **RGB1-PC** input source in main input option of SETUP menu. (Refer to P.28)

### When connecting with a DVI cable

- 1 Connect the DVI output of the PC to the **DVI INPUT (PC/DTV INPUT)** jack on the set.
- 2 Connect the PC audio outputs to the **DIGITAL AUDIO COMPONENT1/DVI INPUT** jack on the set.
- 3 Turn on the PC and the set.
- 4 Select **DVI-PC** input source in main input option of SETUP menu. (Refer to P.28)



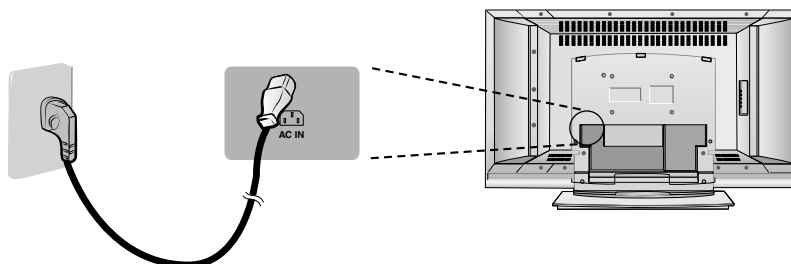
1. To get the best picture quality, adjust the PC graphics card to 1024x768, 60Hz.
2. If the graphic card on the PC does not output analog and digital RGB simultaneously, connect only one of either PC INPUT or DVI INPUT to display the PC on the TV.  
If the graphic card on the PC does output analog and digital RGB simultaneously, set the TV to either RGB or DVI; (the other mode is set to Plug and Play automatically by the TV.)
3. If using a sound card, adjust the PC sound as required.
4. Check the image on your TV. There may be noise associated with the resolution, vertical pattern, contrast or brightness in PC mode. If noise is present, change the PC mode to another resolution, change the refresh rate to another rate or adjust the brightness and contrast on the menu until the picture is clear. If the refresh rate of the PC graphic card can not be changed, change the PC graphic card or consult the manufacturer of the PC graphic card.
5. Avoid keeping a fixed image on the TV's screen for a long period of time. The fixed image may become permanently imprinted on the screen.
6. The synchronization input form for Horizontal and Vertical frequencies is separate.

### Monitor Display Specifications (RGB1-PC / DVI-PC Mode)

Resolution	Horizontal Frequency (kHz)	Vertical Frequency (Hz)
640x350	31.468	70.09
720x400	37.927	85.03
640x480	31.469	59.94
	37.861	72.80
	37.500	75.00
800x600	35.156	56.25
	37.879	60.31
	48.077	72.18
	46.875	75.00
1024x768	48.363	60.00
	56.476	70.06
	60.023	75.02

### Power Cord Connection

- Connect the power cord correctly as shown.

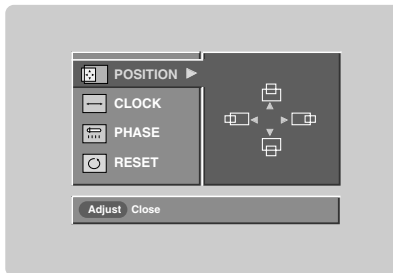


# Operation

## Screen Setup for PC mode

- Be sure to select the RGB1-PC/RGB1-DTV/RGB2-PC/RGB2-DTV source before operation.  
(For RGB1-DTV input source, Position and Reset are available.)
- In DVI-PC and DVI-DTV input source, settings are not adjustable.
- You can manually adjust picture position and minimize image shaking for the PC input source.

### Adjustment for screen Position, Clock, and Phase



#### Mini Glossary

**Position** This function is to adjust picture to left/right and up/down as you prefer.

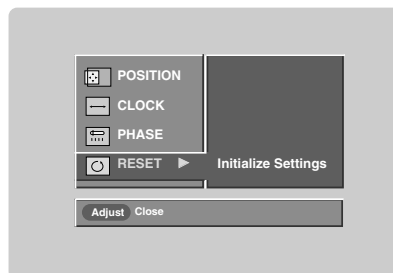
**Clock** This function is to minimize any vertical bars or stripes visible on the screen background. And the horizontal screen size will also change.

**Phase** This function allows you to remove any horizontal noise and clear or sharpen the image of characters.

1. Press the **ADJUST** button and then use **▲ / ▼** button to select **POSITION, CLOCK,** or **PHASE.**
2. Press **ENTER** button and then use **▲ / ▼ / ◀ / ▶** buttons to make appropriate adjustments.
  - The **PHASE** adjustment range is -16 ~ +16.
  - The **CLOCK** adjustment range is -30 ~ +30.
3. Press **ENTER** button.

### Initializing (Reset to original factory values)

- To initialize the adjusted values



1. Press the **ADJUST** button and then use **▲ / ▼** button to select the **RESET** option.
2. Press **ENTER** button and then use **◀ / ▶** button to select **Yes.**
3. Press **ENTER** button.

## Basic operation

### Turning on the TV

#### Turning on the TV just after installation

1. Connect power cord correctly.
2. The TV will switch on automatically.

#### Turning on the TV (power cord is still connected)

1. If the TV was turned off
  - Press the **ON/OFF** button on the TV or press the **POWER, TV/VIDEO, COMP/RGB/DVI, CH (+, -), Number (0 ~ 9)** button on the remote control to turn the TV on.

### Volume Adjustment

1. Press the **VOL (+, -)** button to adjust the volume.
2. If you want to switch the sound off, press the **MUTE** button.
3. You can cancel this function by pressing the **MUTE** or **VOL (+, -)** button.

### Channel Selection

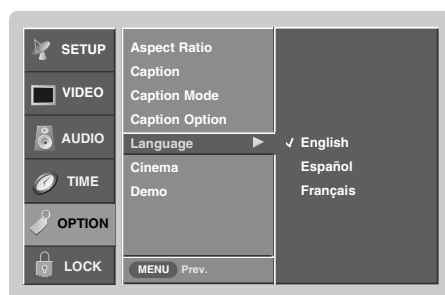
Press the **CH (+, -)** or **NUMBER** buttons to select a channel number.



- If you intend to be away on vacation, disconnect the power plug from the wall power outlet.

### On-screen Menus Language Selection

- The menus can be shown on the screen in the selected language. First select your language.

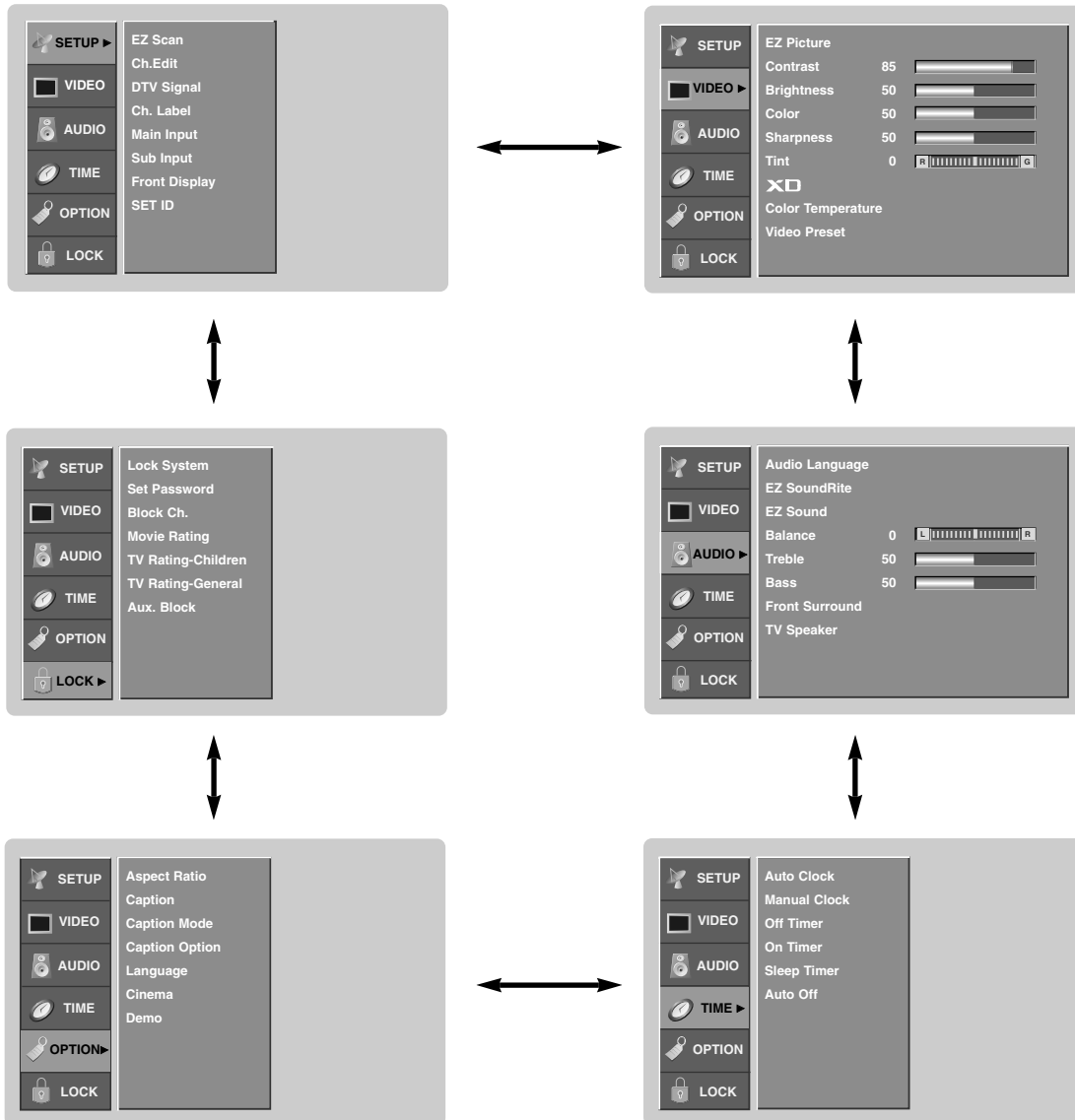


1. Press the **MENU** button and then use **▲ / ▼** button to select the **OPTION** menu.
2. Press the **▶** button and then use **▲ / ▼** button to select **Language**.
3. Press the **▶** button and then use **▲ / ▼** button to select your desired language. From this point on, the on-screen menus will be shown in the selected language.
4. Press **EXIT** button to return to TV viewing or press **MENU** button to return to the previous menu.

# On Screen Menus Selection and Adjustment

## How to adjust the OSD screen

1. Press the **MENU** button and then **▲ / ▼** button to select each menu.
2. Press the **▶** button and then use **▲ / ▼ / ◀ / ▶** button to display the available menus.



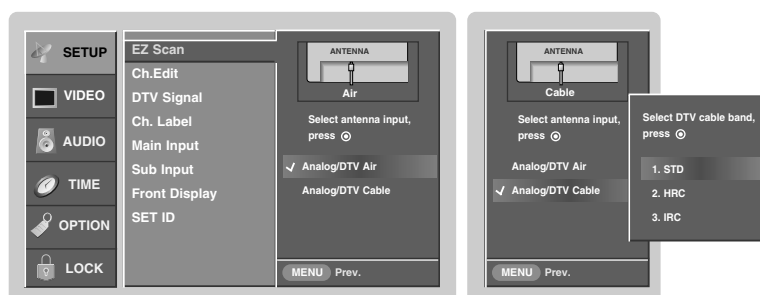
- The OSD (On Screen Display) function enables you to adjust the screen status conveniently since it provides graphical presentation.
- In this manual, the OSD (On Screen Display) may be different from your TV's because it is just example to help the TV operation.



## Setup Menu Options

### EZ Scan (Channel Search)

- Automatically finds all channels available through antenna or cable inputs, and stores them in memory on the channel list.
- Run EZ Scan again after any Antenna/Cable connection changes.



#### Mini Glossary

##### Analog/DTV Air

Watching the Over-the-air, cable, and digital over-the-air signals via antenna input port.

##### Analog/DTV Cable

Watching the Over-the-air, cable, and digital cable signals via antenna input port

##### Cable Service Band Note

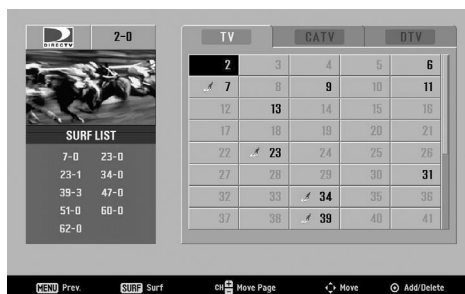
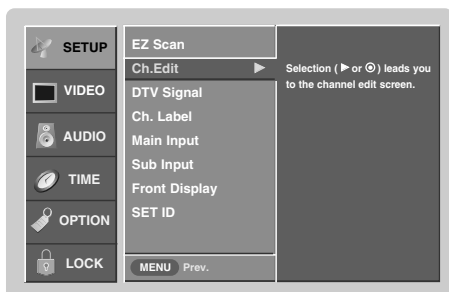
Select STD=Standard, HRC=HRC Band, or IRC=IRC Band. (For further band information, contact your cable service provider.)

1. Press the **MENU** button and then use **▲ / ▼** button to select the **SETUP** menu.
2. Press the **▶** button and then use **▲ / ▼** button to select **EZ Scan**.
3. Press the **▶** button and then use **▲ / ▼** button to select antenna input.
4. Press the **ENTER** button to begin the channel search.  
Allow EZ Scan to complete the channel search cycle for TV, CATV, DTV and CADTV.



## Setup Menu Options continued

### Channel Edit

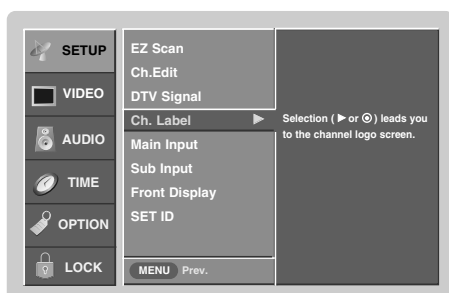


- Create two different types of channel lists in memory: "Custom list" and "Surf" (Favorite) channel list from the default channel list created from the EZ Scan channel search.
  - A custom list can be created by toggling each channel on or off with ENTER button. Once a channel is highlighted, you will be able to see whether the channel is currently added or deleted by referring to the small window at the top-left corner of the screen.
  - You can create your own Surf channel list with up to 10 channels. It appears at the bottom-left corner of the screen. Use the **SURF** button on the remote control when a channel is highlighted, to add or delete the channel from the Surf channel list.
  - You can create your SURF channel list from the channel list memorized from EZ Scan.
  - CATV is available for 1-125 channel.
1. Press the **MENU** button and then use ▲ / ▼ button to select the **SETUP** menu.
  2. Press the ▶ button and then use ▲ / ▼ button to select **Ch. Edit**.
  3. Press the ▶ button. You will now see a screen filled with channel numbers and a preview picture.
  4. Use ▲ / ▼ / ◀ / ▶ button to select a channel and then use the **ENTER** button to add or delete it. Press **SURF** button to add the channel to the Surf List.
  5. Press **EXIT** button to return to TV viewing or press **MENU** button to return to the previous menu.

## DTV Signal Strength

- Reveals how strong your DTV signal is and whether you need to adjust your antenna or digital cable input. The higher the signal strength, the less likely you are to experience picture degradation.
  - Digital DTV Signals: May not be available in all areas, nor are broadcast on all programs.
1. Press the **SIGNAL** button.
  2. View the on-screen signal strength monitor to see the quality of the signal being received.
    - You can also check the **DTV Signal** strength with the **SETUP** menu.

## Channel Label Setup

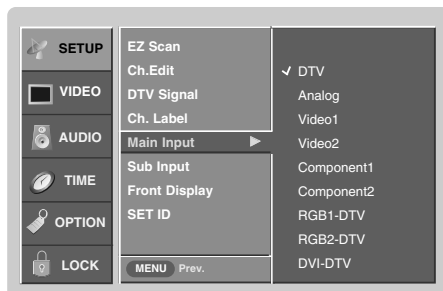


- Choose preset labels for your channels.
  - If a channel label is provided on the signal from the broadcasting station, the TV displays a short name for a DTV channel: even if you didn't preset a label for the channel.
1. Press the **MENU** button and then use **▲ / ▼** button to select the **SETUP** menu.
  2. Press the **▶** button and then use **▲ / ▼** button to select **Ch. Label**.
  3. Press the **▶** button. You will now see a screen filled with Labels and a preview screen.
  4. Use the **CH +/-** button to select a channel to Label.
  5. Use **▲ / ▼ / ◀ / ▶** button to select the appropriate label for the channel, then press **ENTER** button to set the Label to the selected channel.
  6. Press **EXIT** button to return to TV viewing or press **MENU** button to return to the previous menu.

## Setup Menu Options continued

### Main Picture Source Selection

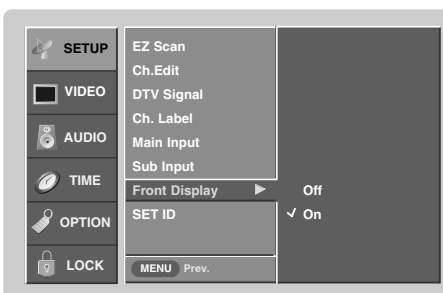
- Changes the picture source so you can watch your off-air TV, cable TV, VCR, DVD, or any other devices that are connected to your TV.



1. Press the **MENU** button and then use **▲ / ▼** button to select the **SETUP** menu.
2. Press the **▶** button and then use **▲ / ▼** button to select **Main Input**.
3. Press the **▶** button and then use **▲ / ▼** button to select the source: DTV, Analog, Video1, Video2, Component1, Component2, RGB1-DTV (or RGB1-PC), RGB2-DTV (or RGB2-PC), DVI-DTV (or DVI-PC).
4. Press **EXIT** button to return to TV viewing or press **MENU** button to return to the previous menu.

### Front LED (Light Emitting Diode) Display

- Illuminates brightly when the set is turned on. The LED displays current TV status.



1. Press the **MENU** button and then use **▲ / ▼** button to select the **SETUP** menu.
2. Press the **▶** button and then use **▲ / ▼** button to select **Front Display**.
3. Press the **▶** button and then use **▲ / ▼** button to select **Off** or **On**.
4. Press **EXIT** button to return to TV viewing or press **MENU** button to return to the previous menu.

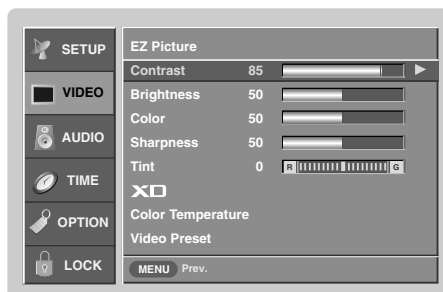
## Video Menu Options

### EZ Picture

- EZ Picture adjusts the TV for the best picture appearance. Select the preset value in the EZ Picture menu based on the program category.
  - When adjusting Video menu options (contrast, brightness, color, sharpness, tint, and color temperature) manually, EZ Picture automatically changes to **Off**.
  - **Day Light, Normal, Night Time, Movie, Video Game, and Sports** settings are preset for optimum picture quality at the factory and are not adjustable.
1. Press the **VIDEO** button repeatedly to select the picture appearance setup option as shown below: **Off** (your own settings), **Day Light, Normal, Night Time, Movie, Video Game, and Sports**.
    - You can also use the **VIDEO** menu to adjust **EZ Picture**.
  2. Press the **EXIT** button to save and return to TV viewing.

### Manual Picture Control (EZ Picture-Off option)

- Adjust the picture appearance to suit your preference and viewing situations.

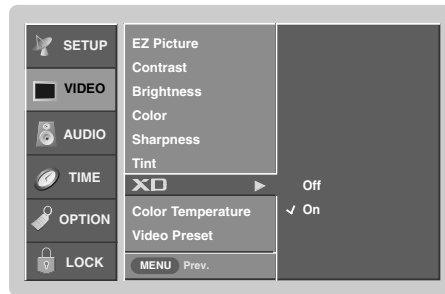


1. Press the **MENU** button and then use **▲ / ▼** button to select the **VIDEO** menu.
2. Press the **▶** button and then use **▲ / ▼** button to select the desired picture option (**Contrast, Brightness, Color, Sharpness, or Tint**).
3. Press the **▶** button and then use **◀ / ▶** button to make appropriate adjustments.
4. Press **EXIT** button to return to TV viewing or press **MENU** button to return to the previous menu.

## Video Menu Options continued

### XD Function

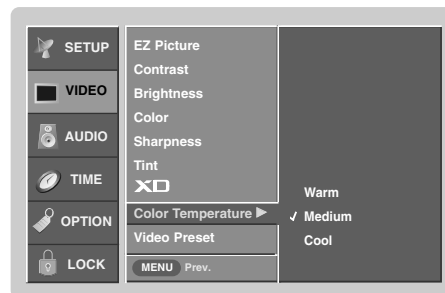
- XD is LG electronic's unique picture improving technology to display a real HD source through an advanced digital signal processing algorithm.
- When selecting EZ Picture options (Day Light, Normal, Night Time, Movie, Video Game, and Sports), XD is automatically change to On. If XD setting is Off, EZ Picture is automatically change to Off.



1. Press the **MENU** button and then use ▲ / ▼ button to select the **VIDEO** menu.
2. Press the ► button and then use ▲ / ▼ button to select **XD**.
3. Press the ► button and then use ▲ / ▼ button to select **Off** or **On**.
4. Press **EXIT** button to return to TV viewing or press **MENU** button to return to the previous menu.

### Color Temperature Control

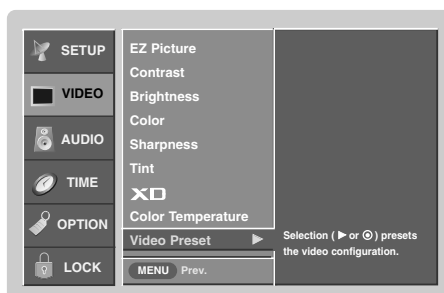
- Choose one of three automatic color adjustments. Set to warm to enhance hotter colors such as red, or set to cool to see less intense colors with more blue.



1. Press the **MENU** button and then use ▲ / ▼ button to select the **VIDEO** menu.
2. Press the ► button and then use ▲ / ▼ button to select **Color Temperature**.
3. Press the ► button and then use ▲ / ▼ button to select either **Warm**, **Medium**, or **Cool**.
4. Press **EXIT** button to return to TV viewing or press **MENU** button to return to the previous menu.

## Video Preset

- Use to quickly reset all the Video menu options to their original factory preset values.



1. Press the **MENU** button and then use ▲ / ▼ button to select the **VIDEO** menu.
2. Press the ▶ button and then use ▲ / ▼ button to select **Video Preset**.
3. Press the ▶ button to reset the Video menu options to original values.



## Audio Menu Options

### Audio Language

- Other languages may be available if a digital signal is provided by the broadcasting station.



1. Press the **MENU** button and then use **▲ / ▼** button to select the **AUDIO** menu.
2. Press the **▶** button and then use **▲ / ▼** button to select **Audio Language**.
3. Press the **▶** button and then use **▲ / ▼** button to select: English, Spanish, or French.
4. Press **EXIT** button to return to TV viewing or press **MENU** button to return to the previous menu.

### EZ SoundRite

- Scans for changes in sound level during commercials, then adjusts the sound to match the specified audio level. SoundRite makes sure that the volume level remains consistent whether you are watching a commercial or a regular TV program.



1. Press the **MENU** button and then use **▲ / ▼** button to select the **AUDIO** menu.
2. Press the **▶** button and then use **▲ / ▼** button to select **EZ SoundRite**.
3. Press the **▶** button and then use **▲ / ▼** button to select **Off** or **On**.
4. Press **EXIT** button to return to TV viewing or press **MENU** button to return to the previous menu.

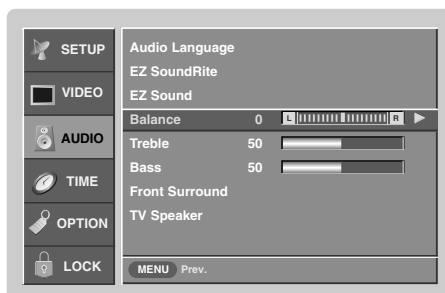


## EZ Sound

- EZ Sound lets you enjoy the best sound without any special adjustment because the TV sets the appropriate sound options based on the program content.
  - When adjusting sound options (treble, bass, and front surround) manually, EZ Sound automatically switches **Off**.
  - **Normal, Stadium, Theater, and Music** are preset for good sound quality at the factory and are not adjustable.
1. Press the **SOUND** button repeatedly to select the appropriate sound setup as shown below: **Off** (your own settings), **Normal, Stadium, Theater, and Music**.
    - You can also adjust **EZ Sound** in the **AUDIO** menu.
  2. Press **EXIT** button to save and return to TV viewing.

## Manual Sound Control (EZ Sound-Off option)

- Adjust the sound to suit your taste and room situations.



1. Press the **MENU** button and then use **▲ / ▼** button to select the **AUDIO** menu.
2. Press the **▶** button and then use **▲ / ▼** button to select the desired sound option (**Balance, Treble, or Bass**).
3. Press the **▶** button and then use **◀ / ▶** button to make appropriate adjustments.
4. Press **EXIT** button to return to TV viewing or press **MENU** button to return to the previous menu.




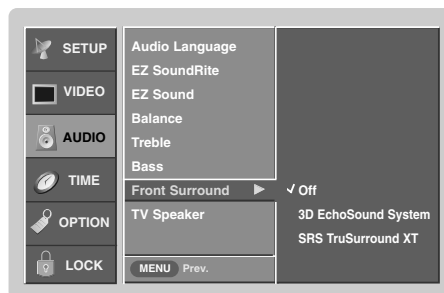
## Audio Menu Options continued

### Stereo/SAP Broadcasts Setup

- This TV can receive MTS stereo programs and any SAP (Secondary Audio Program) that accompanies the stereo program; if the station transmits an additional sound signal as well as the original one.
  - Stereo or SAP can be received only when the TV station transmits those signals even though you have selected Stereo or SAP.
  - Mono sound is automatically received if the broadcast is only in Mono; even though Stereo or SAP has been selected.
  - Select Mono if you want to listen to the mono sound in remote fringe areas during stereo/SAP broadcasting.
1. Use the **SAP** button to select your desired MTS mode in analog signal. Each time you press the **SAP** button, **Mono**, **Stereo**, or **SAP** appear in turn.
    - If other languages available on the digital signal, select them with the **SAP** button.
  2. Press **EXIT** button to save and return to TV viewing.

### Front Surround

-  is a trademark of SRS Labs, Inc.
- TruSurround XT technology is incorporated under license from SRS Labs, Inc.
- Manufactured under license from Dolby Laboratories. "Dolby" and the double-D symbol are trademarks of Dolby Laboratories.



#### Mini Glossary

##### **SRS TruSurround XT**

Takes advantage of any multi-channel format without needing to add extra speakers or equipment. Dialog clarity, bass enrichment, and the addition of stereo audio enhancement that produces an immersive sound experience from standard stereo material.

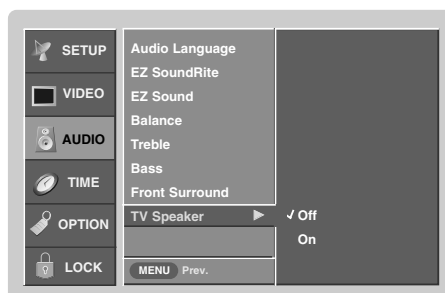
##### **3D EchoSound System**

Creates a stunning simulated stereo effects from any mono sound and a realistic three-dimensional sound with a very wide and deep sound stage into stereo sound.

1. Press the **MENU** button and then use **▲ / ▼** button to select the **AUDIO** menu.
2. Press the **▶** button and then use **▲ / ▼** button to select **Front Surround**.
3. Press the **▶** button and then use **▲ / ▼** button to select **Off**, **3D EchoSound System** or **SRS** (Sound Retrieval System) **TruSurround XT**.
4. Press **EXIT** button to return to TV viewing or press **MENU** button to return to the previous menu.

## TV Speakers On/Off Setup

- Turn TV speakers off if using external audio equipment. Feature turns the TV Speakers option On or Off.

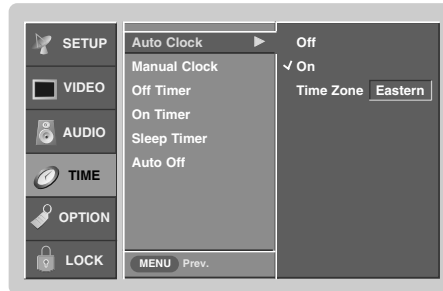


1. Press the **MENU** button and then use ▲ / ▼ button to select the **AUDIO** menu.
2. Press the ▶ button and then use ▲ / ▼ button to select **TV Speaker**.
3. Press the ▶ button and then use ▲ / ▼ button to select **Off** or **On**.
4. Press **EXIT** button to return to TV viewing or press **MENU** button to return to the previous menu.

## Time Menu Options

### Auto Clock Setup

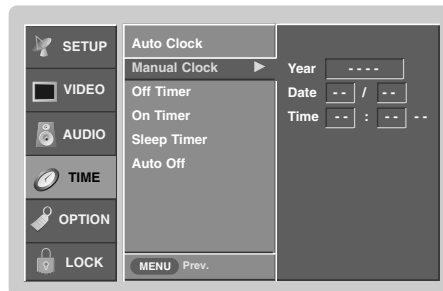
- The time is set automatically from a digital channel signal.
- The digital channel signal includes information for the current time provided by the broadcasting station.
- Set the clock manually, if the current time is set incorrectly by the auto clock function.



1. Press the **MENU** button and then use **▲ / ▼** button to select the **TIME** menu.
2. Press the **▶** button and then use **▲ / ▼** button to select **Auto Clock**.
3. Press the **▶** button and then use **▲ / ▼** button to select **On**.
4. Press the **▶** button and then use **▲ / ▼** button to select your viewing area time zone: **Eastern, Central, Mountain, Pacific, Alaska, or Hawaii**.
5. Press **EXIT** button to return to TV viewing or press **MENU** button to return to the previous menu.

### Manual Clock Setup

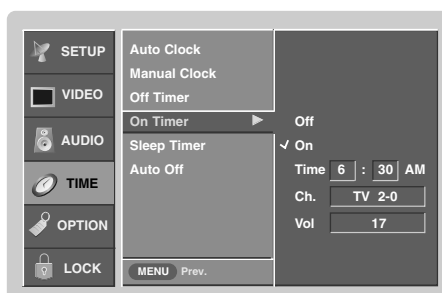
- If current time setting is wrong, reset the clock manually.



1. Press the **MENU** button and then use **▲ / ▼** button to select the **TIME** menu.
2. Press the **▶** button and then use **▲ / ▼** button to select **Manual Clock**.
3. Press the **▶** button and then use **◀ / ▶** button to select either the year, date, or time option. Once selected, use the **▲ / ▼** button to set the year, date, and time options.
4. Press **EXIT** button to return to TV viewing or press **MENU** button to return to the previous menu.

## On/Off Timer Setup

- Timer function operates only if current time has been set.
- Off-Timer function overrides On-Timer function if they are set both set to the same time.
- The TV must be in standby mode for the On-Timer to work.
- If you do not press any button within 2 hours after the TV turns on with the On Timer function, the TV will automatically revert to standby mode.



1. Press the **MENU** button and then use **▲ / ▼** button to select the **TIME** menu.
2. Press the **▶** button and then use **▲ / ▼** button to select **Off Timer** or **On Timer**.
3. Press the **▶** button and then use **▲ / ▼** button to select **On**.
  - To cancel **On/Off timer** function, select **Off**.
4. Press the **▶** button and then use **▲ / ▼** button to set the hour.
5. Press the **▶** button and then use **▲ / ▼** button to set the minutes.
6. **For only On timer function**
  - Press the **▶** button and then use **▲ / ▼** button to select the channel at turn-on.
  - Press the **▶** button and then use **▲ / ▼** button to set the sound level at turn-on.
7. Press **EXIT** button to return to TV viewing or press **MENU** button to return to the previous menu.

## Sleep Timer

- The Sleep Timer turns the TV off at the preset time. Note that this setting is cleared when the TV is turned off.
  - You can also set up the **Sleep Timer** in the **TIME** menu.
1. Press the **TIMER** button repeatedly to select the number of minutes. First the **Off** option appears on the screen, followed by the following sleep timer options: 10, 20, 30, 60, 90, 120, 180, and 240 minutes.
  2. When the number of minutes you want is displayed on the screen, press the **ENTER** button. The timer begins to count down from the number of minutes selected.
  3. To check the remaining minutes before the TV turns off, press the **TIMER** button once.
  4. To cancel the Sleep Timer, press the **TIMER** button repeatedly to select **Off**.

## Time Menu Options continued

### Auto Off

- If set to on and there is no input signal, the TV turns off automatically after 10 minutes.



1. Press the **MENU** button and then use ▲ / ▼ button to select the **TIME** menu.
2. Press the ▶ button and then use ▲ / ▼ button to select **Auto Off**.
3. Press the ▶ button and then use ▲ / ▼ button to select **Off** or **On**.
4. Press **EXIT** button to return to TV viewing or press **MENU** button to return to the previous menu.



## Option Menu Features

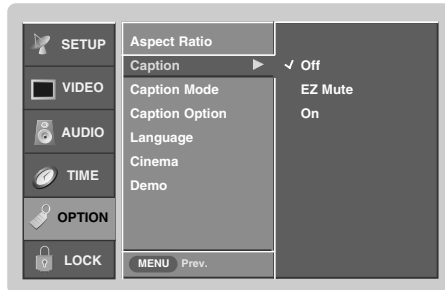
### Aspect Ratio Control

- Lets you choose the way an analog picture with a 4:3 aspect ratio is displayed on your TV with a 16:9 ratio picture format. When you receive an analog picture with a 4:3 aspect ratio on your 16:9 TV, you need to specify how the picture is to be displayed.
  - If you are viewing a picture with a 16:9 aspect ratio, you can't use the Horizon aspect ratio option.
  - Horizon aspect ratio is not available for Component 1-2 (720p/1080i)/RGB1-DTV (720p/1080i)/RGB2-DTV (720p/1080i) / DVI-DTV (720p/1080i) / DTV (720p/1080i) input source.
  - RGB1-PC/RGB2-PC/DVI-PC input source use 4:3 or 16:9 aspect ratio.
- If a fixed image is displayed on the screen for a long time, that fixed image may become imprinted on the screen and remain visible.
1. Press the **RATIO** button repeatedly to select the desired picture format.  
You can also adjust **Aspect Ratio** in the **OPTION** menu.
    - **Set By Program**  
Selects the proper picture proportion to match the source's image. (4:3 → 4:3, 16:9 → 16:9)
    - **4:3**  
Choose **4:3** when you want to view a picture with an original 4:3 aspect ratio, with black bars appearing at both the left and right sides.
    - **16:9**  
Choose **16:9** when you want to adjust the picture horizontally, in a linear proportion to fill the entire screen.
    - **Horizon**  
Choose **Horizon** when you want to adjust the picture in a non-linear proportion, that is, more enlarged at both sides, to create a spectacular view.
    - **Zoom 1**  
Choose **Zoom 1** when you want to view the picture without any alteration. However, the top and bottom portions of the picture will be cropped.
    - **Zoom 2**  
Choose **Zoom 2** when you want the picture to be altered, both horizontally extended and vertically cropped. The picture taking a halfway trade off between alteration and screen coverage.
    - **Cinema Zoom**  
Choose **Cinema Zoom** when you want to enlarge the picture in correct proportion. Note: When enlarging or reducing the picture, the image may become distorted.  
You can adjust the enlarge proportion of Cinema Zoom using **▲ / ▼** button. The adjustment range is 1~16.



## Option Menu Features continued

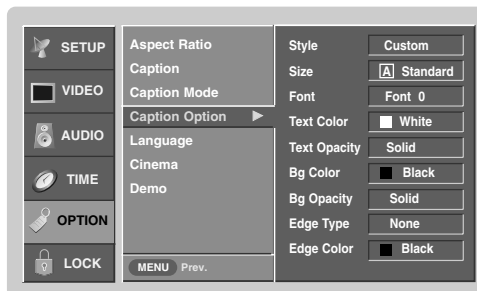
### Caption



1. Press the **MENU** button and then use **▲ / ▼** button to select the **OPTION** menu.
2. Press the **▶** button and then use **▲ / ▼** button to select **Caption**.
3. Press the **▶** button and then use **▲ / ▼** button to select **Off, EZ Mute, On**.
4. Press **EXIT** button to return to TV viewing or press **MENU** button to return to the previous menu.

### Caption Option

- Customize the DTV/CADTV captions that appear on your screen.



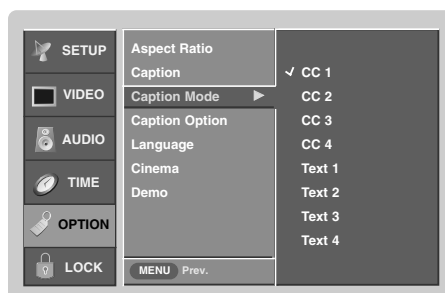
1. Press the **MENU** button and then use **▲ / ▼** button to select the **OPTION** menu.
2. Press the **▶** button and then use **▲ / ▼** button to select **Caption Option**.
3. Press the **▶** button and then use **◀ / ▶** button to select **Custom**.
4. Use **▲ / ▼** button to customize the Style, Font, etc., to your preference. A preview icon is provided at the bottom of the screen, use it to see the caption language.
  - **Size:** Set the size the words will appear in.
  - **Font:** Select a typeface for the words.
  - **Text Color:** Choose a color for the text.
  - **Text Opacity:** Specify the opacity for the text color.
  - **Bg (Background) Color:** Select a background color.
  - **Bg (Background) Opacity:** Select the opacity for the background color.
  - **Edge Type:** Select an edge type.
  - **Edge Color:** Select a color for the edges.
5. Press **EXIT** button to return to TV viewing or press **MENU** button to return to the previous menu.



## Caption Mode

### \* Analog Broadcasting System Captions

- Select a caption mode for displaying captioning information if provided on a program.
- Analog caption displays information at any position on the screen usually the program's dialog.
- Text displays information, usually at the bottom position and is used for a data service, generally not program related.
- Caption/Text, if provided by the broadcaster, would be available for both digital and analog channels on the Antenna 1 source.
- This TV is programmed to remember the caption/text mode it was last set to, when you turn the power off.



1. Use the **CC** button repeatedly to select Caption **Off**, **CC1**, **CC2**, **CC3**, **CC4**, **Text1**, **Text2**, **Text3**, or **Text4**.
  - **EZ Mute** shows the selected captions option (if available on program) when the TV sound is muted.
  - You can also use the **OPTION** menu to select **Caption Mode**.

1. Press the **MENU** button and then use **▲ / ▼** button to select the **OPTION** menu.
2. Press the **▶** button and then use **▲ / ▼** button to select **Caption Mode**.
3. Press the **▶** button and then use **▲ / ▼** button to select caption: **CC1**, **CC2**, **CC3**, **CC4**, **Text1**, **Text2**, **Text3**, or **Text4**.

#### • CAPTION

The term for the words that scroll across the bottom of the TV screen; usually the audio portion of the program provided for the hearing impaired.

#### • TEXT

The term for the words that appear in a large black frame and almost cover the entire screen; usually messages provided by the broadcaster.

4. Press **EXIT** button to return to TV viewing or press **MENU** button to return to the previous menu.

### \* Digital Broadcasting System Captions

- Choose the language you want the DTV/CADTV Captions to appear in.
- The other languages can be chosen for digital sources only if they are included on the program with using the **CC** button.



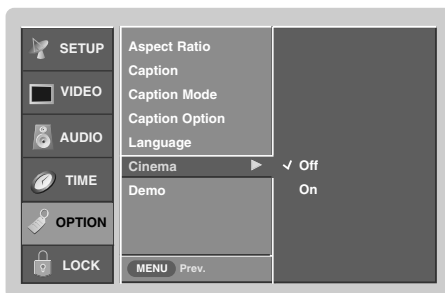
1. Press the **MENU** button and then use **▲ / ▼** button to select the **OPTION** menu.
2. Press the **▶** button and then use **▲ / ▼** button to select **Caption Mode**.
3. Press the **▶** button and then use **▲ / ▼** button to select available caption languages: **English**, **Spanish**, or **French**.
4. Press **EXIT** button to return to TV viewing or press **MENU** button to return to the previous menu.



## Option Menu Features continued

### Cinema Mode Setup

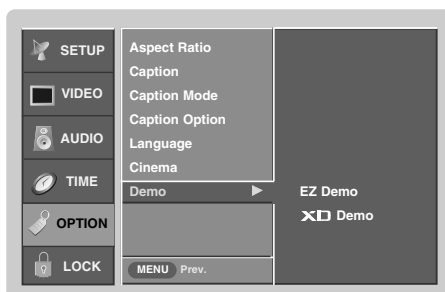
- Sets up the TV for the best picture appearance for viewing movies.



1. Press the **MENU** button and then use **▲ / ▼** button to select the **OPTION** menu.
2. Press the **▶** button and then use **▲ / ▼** button to select **Cinema**.
3. Press the **▶** button and then use **▲ / ▼** button to select **Off** or **On**.
4. Press **EXIT** button to return to TV viewing or press **MENU** button to return to the previous menu.

### Demo (Review)

- *EZ Demo: Use it to scan the features and menu options available on your TV.*
- *XD Demo: Use it to see the difference between XD Demo on and XD Demo off.*



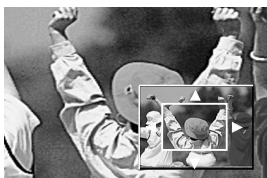
1. Press the **MENU** button and then use **▲ / ▼** button to select the **OPTION** menu.
2. Press the **▶** button and then use **▲ / ▼** button to select **Demo**.
3. Press the **▶** button and then use **▲ / ▼** button to select **EZ Demo**, or **XD Demo**.
4. Press the **▶** button to start demonstration.
5. Press **EXIT** button to return to TV viewing.



- **XD Demo**  
To release XD Demo, press the **EXIT** button.

### Split Zoom (DTV 720p, or 1080i mode only)

- Enlarges the picture with correct proportions.
- When enlarging the picture, the image may become distorted.



1. Press the **ZOOM** button in DTV 720p, or 1080i modes.
2. Use the **▲ / ▼ / ◀ / ▶** buttons to select the screen split zoom section.
3. To return to normal viewing, press the **ZOOM** button again.

## Lock Menu Options

Parental Control can be used to block specific channels, ratings and other viewing sources.

The Parental Control Function (V-Chip) is used to block program viewing based on the ratings sent by the broadcasting station. The default setting is to allow all programs to be viewed. Viewing can be blocked by the type of program and by the categories chosen to be blocked. It is also possible to block all program viewing for a time period. To use this function, the following must be done :

1. Set ratings and categories to be blocked.
2. Specify a password
3. Enable the lock

### V-Chip rating and categories

Rating guidelines are provided by broadcasting stations. Most television programs and television movies can be blocked by TV Rating and/or Individual Categories. Movies that have been shown at the theaters or direct-to-video movies use the Movie Rating System (MPAA) only.

### Ratings for Movies previously shown in theaters:

#### Movie Ratings :

- Blocking Off (Permits all programs)
- G (General audience)
- PG (Parental guidance suggested)
- PG-13 (Parents strongly cautioned)
- R (Restricted)
- NC-17 (No one 17 and under admitted)
- X (Adult only)

If you set PG-13 : G and PG movies will be available , PG-13, R, NC-17 and X will be blocked.

### Ratings for Television programs including made-for-TV movies :

- TV-G (General audience)
- TV-PG (Parental guidance suggested)
- TV-14 (Parents strongly cautioned)
- TV-MA (Mature audience only)
- TV-Y (All children)
- TV-Y7 (Children 7 years older)

#### TV Rating Children:

- Age (applies to TV-Y, TV-Y7)
- Fantasy Violence (applies to TV-Y7)

#### TV Rating General:

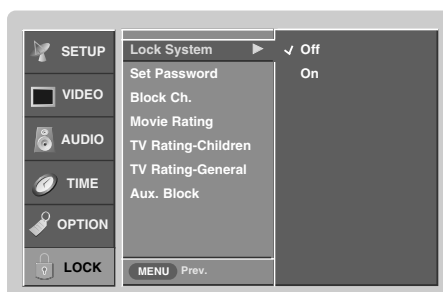
- Age (applies to TV-G, TV-PG, TV-14, TV-MA)
- Dialogue - sexual dialogue (applies to TV-PG, TV-14)
- Language - adult language (applies to TV-PG, TV-14, TV-MA)
- Sex - sexual situations (applies to TV-PG, TV-14, TV-MA)
- Violence (applies to TV-PG, TV-14, TV-MA)

#### Aux. Block

- Video 1, 2 (On, Off)
- Component 1, 2 (On, Off)
- RGB 1, 2, and DVI (On, Off)

## Parental Lock Setup

- Lets you set up blocking schemes to block specific channels, ratings, and external viewing sources.
- A password is required to gain access to this menu if the Lock System is turned on.



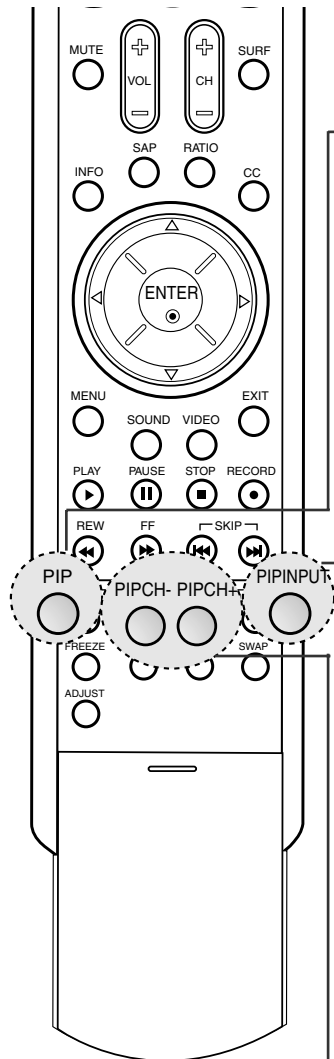
1. Press the **MENU** button and then use **▲ / ▼** button to select the **LOCK** menu. Then, press the **▶** button
  - If **Lock** is already set, enter the password as requested.
  - The TV is set up with the initial password "0-0-0-0".
2. Use the **▲ / ▼** button to choose from the following Lock Menu options. Once the option is selected, change the settings to your preference.
  - **Lock System:** Activates or disables the blocking scheme you set up previously.
  - **Set Password:** Change the password by inputting a new password twice.
  - **Block CH.:** Select a channel number that you wish to block.
  - **Movie Rating (MPPA):** Blocks movies according to the movie ratings limits specified, so children cannot view certain movies. You can set the ratings limit by blocking out all the movies with the ratings above a specified level. Keep in mind that the movie ratings limit only applies to movies shown on TV, not TV programs, such as soap operas.
  - **TV Rating-Children:** Prevents children from watching certain children's TV programs, according to the ratings limit set. The children rating does not apply to other TV programs. Unless you block certain TV programs intended for mature audiences in the TV Rating - sub menu, your children can view those programs.
  - **TV Rating-General:** Based on the ratings, blocks certain TV programs that you and your family do not want to view.
  - **Aux. Block:** Enables you to select a source to block from the external source devices you have hooked up.
3. Press **EXIT** button to return to TV viewing or press **MENU** button to return to the previous menu.



- If you ever forget your password, key in '7', '7', '7', '7' on the remote control.

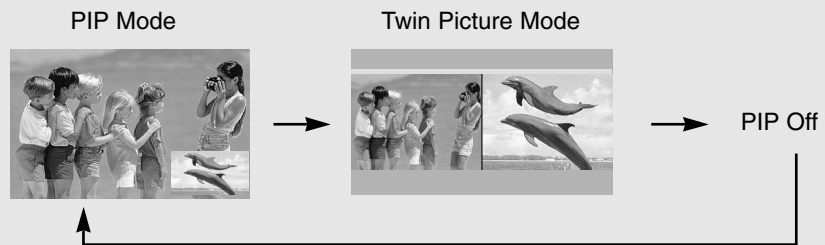
# PIP (Picture-In-Picture) / Twin Picture

- PIP lets you view 2 different inputs (sources) on your TV screen at the same time. One source will be large, and the other source will show a smaller inset image.
- Twin Picture mode splits the screen into 2, allowing 2 picture sources to be shown on the TV screen at the same time. Each source is given half the screen.



## Watching PIP/Twin Picture

Press the **PIP** button to access the sub picture. Each press of PIP changes the PIP options as shown below.



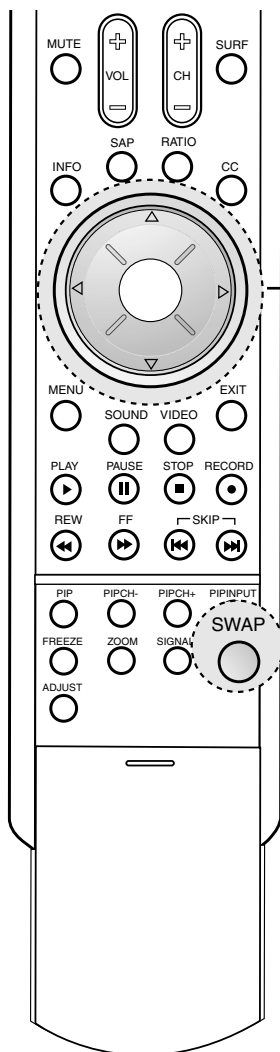
## Selecting an Input Signal Source for PIP/Twin Picture

Use the **PIP INPUT** button to select the input source for the sub picture. Each press of **PIP INPUT** button changes the PIP source. You can also select sources for the **Sub Input** in the **SETUP** menu.

Main Picture Source	Available Sub Picture Sources			
	DTV Signal	Analog Signal	Video 1	Video 2
DTV Signal	X	X	O	O
Analog Signal	X	X	O	O
Video 1	O	O	O	O
Video 2	O	O	O	O

## TV Program selection for PIP

1. Press the **PIP** button.
2. Select the Analog or DTV option on the Sub input menu or with the **PIP INPUT** button. Use the **PIPCH+ / PIPCH-** button to select a channel for the sub picture.



### Moving the PIP sub picture

In PIP mode, press the ▲ / ▼ / ◀ / ▶ button to move the sub picture to a different location on the screen.



### Adjusting Main and Sub Picture Sizes for Twin Picture

Use the ▲ / ▼ / ◀ / ▶ button to change main and sub picture sizes in Twin Picture mode.

i.e)



If the maximal adjusted screen is 16:9, the large screen appears the gray part at both the up and down sides.

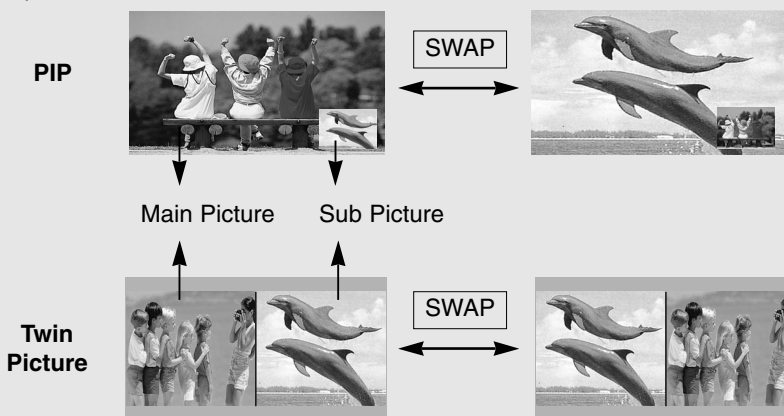


If the maximal adjusted screen is 4:3, the large screen is filled with entire screen vertically as shown.

### Swapping the PIP/Twin Picture

Use the **SWAP** button to switch the main and sub pictures.

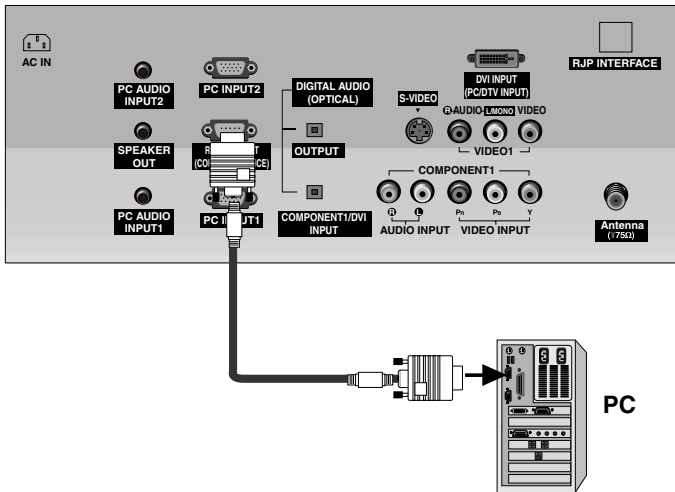
- Component 1, Component 2, RGB1-PC (or RGB1-DTV), RGB2-PC (or RGB2-DTV), DVI-DTV (or DVI-PC) input sources for the main picture can't be used to swap the main and sub pictures.



# External Control Device Setup

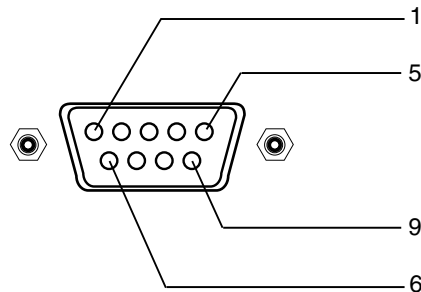
- Connect the RS-232C input jack to an external control device (such as a computer or an A/V control system) and control the Monitor's functions externally.
- Connect the serial port of the control device to the RS-232C jack on the TV back panel.
- RS-232C connection cables are not supplied with the TV.

## RS-232C Setup

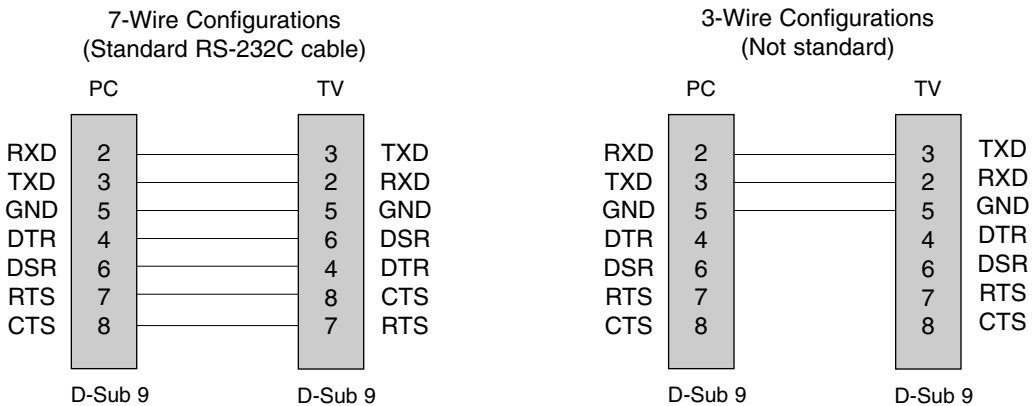


### Type of Connector; D-Sub 9-Pin Male

No.	Pin Name
1	No connection
2	RXD (Receive data)
3	TXD (Transmit data)
4	DTR (DTE side ready)
5	GND
6	DSR (DCE side ready)
7	RTS (Ready to send)
8	CTS (Clear to send)
9	No Connection



### RS-232C Configurations

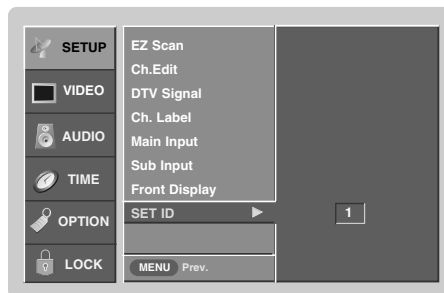




## Set ID

- Use this function to specify a monitor ID number.
- Refer to 'Real Data Mapping'. See page 50.

1. Press the **MENU** button and then use **▲ / ▼** button to select the **SETUP** menu.
2. Press the **▶** button and then use **▲ / ▼** button to select **SET ID**.
3. Press the **▶** button and then use **▲ / ▼** button to adjust **SET ID** to choose the desired monitor ID number. The adjustment range of **SET ID** is 1 ~ 99.
4. Press **EXIT** button to return to TV viewing or press **MENU** button to return to the previous menu.



## Communication Parameters

- Baud rate : 9600 bps (UART)
- Data length : 8 bits
- Parity : None
- Stop bit : 1 bit
- Communication code : ASCII code

\* Use a crossed (reverse) cable.

## Command Reference List

	COMMAND 1	COMMAND 2	DATA (Hexadecimal)
01. Power	k	a	0 ~ 1
02. Input Select	k	b	0 ~ 9
03. Aspect Ratio	k	c	1 ~ 1F
04. Screen Mute	k	d	0 ~ 1
05. Volume Mute	k	e	0 ~ 1
06. Volume Control	k	f	0 ~ 64
07. Contrast	k	g	0 ~ 64
08. Brightness	k	h	0 ~ 64
09. Color	k	i	0 ~ 64
10. Tint	k	j	0 ~ 64
11. Sharpness	k	k	0 ~ 64
12. OSD Select	k	l	0 ~ 1
13. Remote Control Lock Mode	k	m	0 ~ 1
14. PIP/Twin	k	n	0 ~ 3
15. PIP Position	k	q	0 ~ 3
16. Treble	k	r	0 ~ 64
17. Bass	k	s	0 ~ 64
18. Balance	k	t	0 ~ 64
19. Color Temperature	k	u	0 ~ 2
20. PIP Input Source	k	y	0 ~ 3
24. Input Select	x	b	0 ~ 80
25. PIP Input Source	x	y	0 ~ 21

	COM- MAND 1	COM- MAND 2	DATA 0 (Hexadecimal)	DATA 1 (Hexadecimal)	DATA 2 (Hexadecimal)	DATA 3 (Hexadecimal)
21. Channel Tuning	m	a	01 ~ 87	01 ~ 87	00 ~ FE	00 ~ 15
22. Channel Add/Del	m	b	00 ~ 01			
23. Key	m	c				

## Transmission / Receiving Protocol

### Transmission

[Command1][Command2][ ][Set ID][ ][Data][Cr]

- \* [Command 1]: First command to control the set. (j or k)
- \* [Command 2]: Second command to control the set.
- \* [Set ID]: You can adjust the set ID to choose desired monitor ID number in Setup menu. Adjustment range is 1 ~ 99. When selecting Set ID '0', every connected the TV is controlled. Set ID is indicated as decimal (1~99) on menu and as Hexa decimal (0x0~0x63) on transmission/receiving protocol.
- \* [DATA]: To transmit command data.  
Transmit 'FF' data to read status of command.
- \* [Cr]: Carriage Return  
ASCII code '0x0D'
- \* [ ]: ASCII code 'space (0x20)'

### OK Acknowledgement

[Command2][ ][Set ID][ ][OK][Data][x]

- \* The Monitor transmits ACK (acknowledgement) based on this format when receiving normal data. At this time, if the data is data read mode, it indicates present status data. If the data is data write mode, it returns the data of the PC computer.

### Error Acknowledgement

[Command2][ ][Set ID][ ][NG][Data][x]

- \* The Monitor transmits ACK (acknowledgement) based on this format when receiving abnormal data from non-viable functions or communication errors.

Data 1: Illegal Code  
2: Not supported function  
3: Wait more time



**09. Color (Command2:i)**

- ▶ To adjust the screen color.  
You can also adjust color in the Video menu.

Transmission

```
[k][i][ ][Set ID][ ][Data][Cr]
```

Data Min : 0 ~ Max : 64

- Refer to 'Real data mapping'. See page 50.

Acknowledgement

```
[i][ ][Set ID][ ][OK][Data][x]
```

**10. Tint (Command2:j)**

- ▶ To adjust the screen tint.  
You can also adjust tint in the Video menu.

Transmission

```
[k][j][ ][Set ID][ ][Data][Cr]
```

Data Red : 0 ~ Green : 64

- Refer to 'Real data mapping'. See page 50.

Acknowledgement

```
[j][ ][Set ID][ ][OK][Data][x]
```

**11. Sharpness (Command2:k)**

- ▶ To adjust the screen sharpness.  
You can also adjust sharpness in the Video menu.

Transmission

```
[k][k][ ][Set ID][ ][Data][Cr]
```

Data Min: 0 ~ Max: 64

- Refer to 'Real data mapping'. See page 50.

Acknowledgement

```
[k][ ][Set ID][ ][OK][Data][x]
```

**12. OSD Select (Command2:l)**

- ▶ To select OSD (On Screen Display) on/off.

Transmission

```
[k][l][ ][Set ID][ ][Data][Cr]
```

Data 0: OSD off 1: OSD on

Acknowledgement

```
[l][ ][Set ID][ ][OK][Data][x]
```

**13. Remote Control Lock Mode (Command2:m)**

- ▶ To lock the remote control and the front panel controls on the set.

Transmission

```
[k][m][ ][Set ID][ ][Data][Cr]
```

Data 0: Lock off 1: Lock on

Acknowledgement

```
[m][ ][Set ID][ ][OK][Data][x]
```

**14. PIP/ Twin Picture (Command2:n)**

- ▶ To control the PIP (Picture-in-Picture)/Twin picture.  
You can also control the PIP/Twin picture using the PIP button on the remote control.

Transmission

```
[k][n][ ][Set ID][ ][Data][Cr]
```

Data 0: PIP off 2: Twin Picture  
1: PIPAcknowledgement

```
[n][ ][Set ID][ ][OK][Data][x]
```

**15. PIP Position (Command2:q)**

- ▶ To select sub picture position for PIP.

Transmission

```
[k][q][ ][Set ID][ ][Data][Cr]
```

Data 0: Right down on screen  
1: Right up on screen  
2: Left up on screen  
3: Left down on screenAcknowledgement

```
[q][ ][Set ID][ ][OK][Data][x]
```

**16. Treble (Command2:r)**

- ▶ To adjust treble.  
You can also adjust treble in the Audio menu.

Transmission

```
[k][r][ ][Set ID][ ][Data][Cr]
```

Data Min: 0 ~ Max: 64

- Refer to 'Real data mapping'. See page 50.

Acknowledgement

```
[r][ ][Set ID][ ][OK][Data][x]
```

**17. Bass (Command2:s)**

- ▶ To adjust bass.  
You can also adjust bass in the Audio menu.

Transmission

```
[k][s][ ][Set ID][ ][Data][Cr]
```

Data Min: 0 ~ Max: 64

- Refer to 'Real data mapping'. See page 50.

Acknowledgement

```
[s][ ][Set ID][ ][OK][Data][x]
```

**18. Balance (Command2:t)**

- ▶ To adjust balance.  
You can also adjust balance in the Audio menu.

Transmission

```
[k][t][ ][Set ID][ ][Data][Cr]
```

Data Min: 0 ~ Max: 64

- Refer to 'Real data mapping'. See page 50.

Acknowledgement

```
[t][ ][Set ID][ ][OK][Data][x]
```

**19. Color Temperature (Command2:u)**

- ▶ To adjust color temperature.  
You can also adjust color temperature in the Video menu.

*Transmission*

```
[k][u][ ][Set ID][ ][Data][Cr]
```

Data 0: Normal (Medium) 1: Cool 2: Warm

*Acknowledgement*

```
[u][ ][Set ID][ ][OK][Data][x]
```

**20. PIP Input Select (Command2:y)**

- ▶ To select input source for sub picture in PIP/Twin picture mode.

*Transmission*

```
[k][y][ ][Set ID][ ][Data][Cr]
```

Data 0: DTV  
1: Analog  
2: Video 1  
3: Video 2

*Acknowledgement*

```
[y][ ][Set ID][ ][OK][Data][x]
```

**21. Channel Tuning (Command: m a)**

- ▶ To tune channel to following physical/major/minor number

*Transmission*

```
[m][a][ ][Set ID][ ][Data0][ ][Data1][ ][Data2][ ][Data3][ ][Data4][ ][Data5][Cr]
```

Data 0: Physical channel number (Transmit by Hexadecimal code)  
\* NTSC air: 02 ~ 45  
NTSC cable: 01, 0E ~ 7D  
ATSC air: 01 ~ 45  
ATSC cable: 01 ~ 87

Data 1, 2: Major channel number(two part) or channel number(One part)  
\* Data1: High byte  
Data2: Low byte  
Two part channel number: Major number-Minor number  
One part channel number: If the channel band is ATSC digital cable, it can be used. In case of using one part channel number, minor channel does not need.

Data 3, 4: Minor Channel Number  
\* Data3: High byte  
\* Data4: Low byte

5: Attribute

7	Main/Sub Picture	6	Two/One Part Channel	5	Using Physical Channel	4	3	2	1	0	Step
0	Main	0	Two	0	Use	x	0	0	0	0	NTSC Air
1	Sub	1	One	1	No Use	x	0	0	0	1	NTSC Cable
						x	0	0	1	0	ATSC Air
						x	0	0	1	1	ATSC cable_std
						x	0	1	0	0	ATSC cable_hrc
						x	0	1	0	1	ATSC cable_irc
						x	0	1	1	0	ATSC cable auto
						x	0	1	1	1	Reserved
						x	x	x	x	x	...
						x	1	1	1	1	Reserved

\*Two/One part Channel: 6th bit  
This bit is used in a cable-ready system.

\*Using physical channel: 5th bit  
If the channel band is NTSC air or NTSC cable, channel tuning can be done by only physical channel. In this case, using physical channel bit must be low(0).  
But if the channel band is ATSC air or ATSC cable, there are two cases that physical channel enable or disable.  
If the physical channel sending is meaningful, you should set this bit low(0). If the physical channel sending is meaningless, you should set this bit high(1).

*Example*

1. Analog channel: NTSC cable, channel number(35), main picture  
Command: ma 00 23 xx xx xx xx 01  
attribute(0x01): main picture, two part(it's not mandatory), using physical channel, NTSC cable  
'xx' data: don't care major and minor channel number in case analog channel tuning
2. Digital channel: ATSC air, channel number(don't know physical channel, major(30), minor(3)), sub picture  
Command: ma 00 xx 00 1E 00 03 A2  
attribute(0xA2): sub picture, two part, not using physical channel, ATSC air  
'xx' data: don't care analog channel number in case digital channel tuning.
3. Digital channel: ATSC air, channel number(physical(20), major(30), minor(3)), sub picture  
Command: ma 00 14 00 1E 00 82 82  
attribute(0x82): sub picture, two part, using physical channel, ATSC air

*Acknowledgement*

```
[a][ ][Set ID][ ][OK][Data0][Data1][Data2][Data3][Data4][Data5][x][a][ ][Set ID][ ][NG][Data0][x]
```

**22. Channel Add/Del (Command: m b)**

- ▶ To add and delete the channels

*Transmission*

```
[m][b][ ][Set ID][ ][Data][Cr]
```

Data 0: Channel Delete  
1: Channel Add

*Acknowledgement*

```
[b][ ][Set ID][ ][OK][Data][x][b][ ][Set ID][ ][NG][Data][x]
```

**23. Key (Command: m c)**

- ▶ To send IR remote key code

*Transmission*

```
[m][c][ ][Set ID][ ][Data][ ][Cr]
```

Data Key code: Refer to page 53.

*Acknowledgement*

```
[c][ ][Set ID][ ][OK][Data][x]
```

## 24. Input Select (Command:x b) (Main Picture Input)

- To select input source for sub picture in PIP/Twin picture mode.

### Transmission

```
[x][b][ ][Set ID][ ][Data][Cr]
```

DTV	0x00	RGB1-DTV	0x50
Analog	0x10	RGB2-DTV	0x51
Video 1	0x20	RGB1-PC	0x60
Video 2	0x21	RGB2-PC	0x61
Component 1	0x40	DVI-DTV	0x70
Component 2	0x41	DVI-PC	0x80

### Acknowledgement

```
[b][ ][Set ID][ ][OK/NG][Data][x]
```

- \* In case Video/S-video is selected automatically by TV, use only single video input.
- \* In case Video/S-video is selected by user manually, use separate Video/S-video input.

## 25. PIP Input Select (Command:x y)

- To adjust the input source for sub picture in PIP mode

### Transmission

```
[x][y][ ][Set ID][ ][Data][Cr]
```

DTV	0x00
Analog	0x10
Video 1	0x20
Video 2	0x21

### Acknowledgement

```
[y][ ][Set ID][ ][OK/NG][Data][x]
```

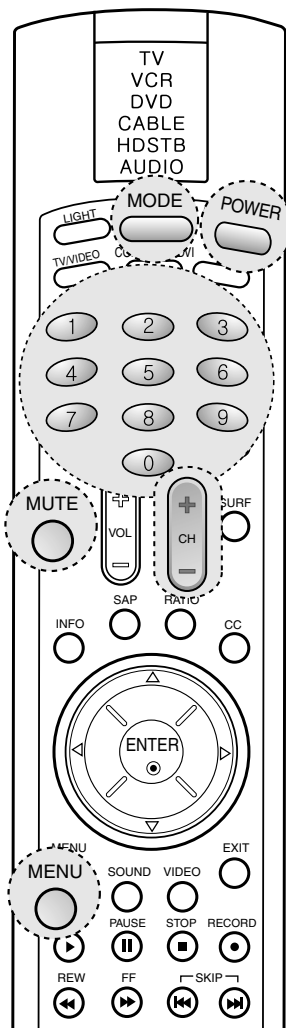
- \* In case Video/S-video is selected automatically by TV, use only single video input.
- \* In case Video/S-video is selected by user manually, use separate Video/S-video input.

## IR Codes

Code (Hexa)	Function	Note
0x0B	TV/VIDEO	R/C Button
	MODE	R/C Button
0x08	POWER	R/C Button (Power On/Off)
0xC4	POWER ON	Discrete IR Code (Only Power On)
0xC5	POWER OFF	Discrete IR Code (Only Power Off)
0x98	COMP/RGB/DVI	R/C Button
0x79	RATIO	R/C Button
0x0E	TIMER	R/C Button
0x10 ~ 0x19	Number Key 0~ 9	R/C Button
0x4C	- (Dash)	R/C Button
0x1A	FLASHBK	R/C Button
0x09	MUTE	R/C Button
0x02	VOL +	R/C Button
0x03	VOL -	R/C Button
0x00	CH +	R/C Button
0x01	CH -	R/C Button
0x1E	SURF	R/C Button
0xAA	INFO	R/C Button
0x39	CC	R/C Button
0x40	▲	R/C Button
0x41	▼	R/C Button
0x07	◀	R/C Button
0x06	▶	R/C Button
0x44	OK	R/C Button
0x43	MENU	R/C Button
0x52	SOUND	R/C Button
0x4D	VIDEO	R/C Button
0x5B	EXIT	R/C Button
0x60	PIP	R/C Button
0x72	PIPCH -	R/C Button
0x71	PIPCH +	R/C Button
0x61	PIP INPUT	R/C Button
0x63	SWAP	R/C Button
0x65	FREEZE	R/C Button
0x7B	ZOOM	R/C Button
0x0A	SAP	R/C Button
0xCB	ADJUST	R/C Button
0xD6	TV	Discrete IR Code (TV Input Selection)
0x5A	VIDEO 1	Discrete IR Code (Video1 Input Selection)
0xD0	VIDEO 2	Discrete IR Code (Video2 Input Selection)
0xBF	COMPONENT 1	Discrete IR Code (Component1 Input Selection)
0xD4	COMPONENT 2	Discrete IR Code (Component2 Input Selection)
0xD5	RGB-PC	Discrete IR Code (RGB-PC Input Selection)
0xD7	RGB-DTV	Discrete IR Code (RGB-DTV Input Selection)
0xC6	DVI-DTV	Discrete IR Code (DVI-DTV Input Selection)
0x76	Ratio 4:3	Discrete IR Code (Only 4:3 Mode)
0x77	Ratio 16:9	Discrete IR Code (Only 16:9 Mode)
0xAF	Ratio Zoom	Discrete IR Code (Only Zoom Mode)
0x70	MULTI PIP	Channel Search
0x96	SIGNAL	R/C Button

## Programming the Remote Control

- ▶ The remote control is a multi-brand or universal remote control. It can be programmed to operate most remote-controllable devices of other manufacturers. Note that the remote control may not control all models of other brands.



### Programming a code into a remote mode

1. Test your remote control.  
To find out whether your remote control can operate the component without programming, turn on the component such as a VCR and press the corresponding **MODE** button (VCR) on the remote control, while pointing at the component. Test the **POWER** and **CH +/-** buttons to see if the component responds properly. If not, the remote requires programming to operate the device.
2. Turn on the component to be programmed, then press the corresponding **MODE** button on the remote control.
3. Press the **MENU** and **MUTE** buttons simultaneously, the remote control is ready to be programmed for the code.
4. There are two ways to find the right code for the component.
  - A. If you press the **CH +/-** buttons repeatedly, the codes will change one at-a-time. Press the **POWER** button after each code change. If the right code is found, the device will turn off.
  - B. Enter a code number using the number buttons on the remote. Programming code numbers for the corresponding component can be found on the following pages. Again, if the code is correct, the device will turn off.
5. Press the **MENU** button to store the code.
6. Test the remote control functions to see if the component responds properly. If not, repeat from step 2.

# Programming Codes

## VCRs

Brand	Codes	Brand	Codes	Brand	Codes	Brand	Codes
AIWA	034	KENWOOD	014 034 039 043	PORTLAND	108	TATUNG	039 043
AKAI	016 043 046 124		047 048	PULSAR	072	TEAC	034 039 043
	125 146	LG (GOLDSTAR)	001 012 013 020	QUARTZ	011 014	TECHNICS	031 033 070
AMPRO	072		101 106 114 123	QUASAR	033 066 075 145	TEKNIKA	019 031 033 034
ANAM	031 033 103	LLOYD	034	RCA	013 020 033 034		101
AUDIO DYNAMICS	012 023 039 043	LXI	003 009 013 014		040 041 062 063	THOMAS	034
BROKSONIC	035 037 129		017 034 101 106		107 109 140 144	TMK	006
CANON	028 031 033	MAGIN	040		145 147	TOSHIBA	008 013 042 047
CAPEHART	108	MAGNAVOX	031 033 034 041	REALISTIC	003 008 010 014		059 082 112 131
CRAIG	003 040 135		067 068		031 033 034 040	TOTEVISION	040 101
CURTIS MATHES	031 033 041	MARANTZ	012 031 033 067		053 054 101	UNITECH	040
DAEWOO	005 007 010 064		069	RICO	058	VECTOR RESEARCH	012
	065 108 110 111	MARTA	101	RUNCO	148	VICTOR	048
	112 116 117 119	MATSUI	027 030	SALORA	014	VIDEO CONCEPTS	012 034 046
DAYTRON	108	MEI	031 033	SAMSUNG	032 040 102 104	VIDEOSONIC	040
DBX	012 023 039 043	MEMOREX	003 010 014 031		105 107 109 112	WARDS	003 013 017 024
DYNATECH	034 053		033 034 053 072		113 115 120 122		031 033 034 040
ELECTROHOME	059		101 102 134 139		125		053 054 131
EMERSON	006 017 025 027	MGA	045 046 059	SANSUI	022 043 048 135	YAMAHA	012 034 039 043
	029 031 034 035	MINOLTA	013 020	SANYO	003 007 010 014	ZENITH	034 048 056
	036 037 046 101	MITSUBISHI	013 020 045 046		102 134		058 072 080 101
	129 131 138 153		049 051 059 061	SCOTT	017 037 112 129		
FISHER	003 008 009 010		151		131		
FUNAI	034	MTC	034 040	SEARS	003 00 009		
GE	031 033 063 072	MULTITECH	024 034	010	013 014 017 020		
	107 109 144 147	NEC	012 023 039 043		031 042 073 081		
GO VIDEO	132 136		048		101		
HARMAN KARDON	012 045	NORDMENDE	043	SHARP	031 054 149		
HITACHI	004 018 026 034	OPTONICA	053 054	SHINTOM	024		
	043 063 137 150	PANASONIC	066 070 074 083	SONY	003 009 031 052		
INSTANTREPLAY	031 033		133 140 145		056 057 058 076		
JCL	031 033	PENTAX	013 020 031 033		077 078 149		
JCPENNY	012 013 015 033		063	SOUNDESIGN	034		
	040 066 101	PHILCO	031 034 067	STS	013		
JENSEN	043	PHILIPS	031 033 034 054	SYLVANIA	031 033 034 059		
JVC	012 031 033 043		067 071 101		067		
	048 050 055 060	PILOT	101	SYMPHONIC	034		
	130 150 152	PIONEER	013 021 048	TANDY	010 034		

## CATV

Brand	Codes	Brand	Codes	Brand	Codes	Brand	Codes
ABC	003 004 039 042	GOLDEN CHANNEL	030		065 085 090	SL MARX	030
	046 052 053	HAMLIN	049 050 055	PIONEER	034 051 052 063	SPRUCER	047 078
AJIN	112	HITACHI	052 055		076	STARCOM	002 004 008 009
ANTRONIK	014	HOSPITALITY	070 077	POST NEWS WEEK	016	STARGATE	008 030
ARCHER	005 007 014 024	JERROLD	002 003 004 008	PRUCER	059	SYLVANIA	067
CABLE STAR	026		009 010 052 069	PTS	011 048 071 072	TADIRAN	030
CENTURION	092		074		073 074	TAEKWANG	110
CENTURY	007	LG (GOLDSTAR)	001 106 101 005	PULSAR	100	TAIHAN	105
CITIZEN	007	M-NET	037	RCA	047	TANDY	017
COLOUR VOICE	065 090	MACOM	033	REGAL	049 050	TEXSCAN	029 067
COMBANO	080 081	MAGNAVOX	010 012 064 079	REGENCY	057	TOCOM	039 040 056
COMTRONICS	019 030	MEMOREX	100	REMBRANT	025	TOSHIBA	100
DIAMOND	023	MOVIE TIME	028 032	RK	091	UNIKA	007 014 024
EAGLE	020 030 040	NSC	015 028 038 071	SAMSUNG	102 107 030 068	UNITED CABLE	004 053
EASTERN	057 062 066		073	SCIENTIFIC ATLANTA	003 011 041 042	UNIVERSAL	005 007 014 024
ELECTRICORD	032	OAK	016 031 037 053		043 045 046		026 027 032 035
GE	072	PANASONIC	044 047	SHERITECH	022	VIEWSTAR	012 015 018 086
GEMINI	008 022 025 054	PARAGON	100	SIGNAL	030		087 088 089
GI	052 074	PHILIPS	006 012 013 020	SIGNATURE	052	ZENITH	100 114 060 093

## HDSTB

Brand	Codes	Brand	Codes	Brand	Codes	Brand	Codes
ALPHASTAR DSR	123	EUROPLUS	114	MEMOREX	057	STARCAST	041
AMPLICA	050	FUJITSU	017 021 022 027	NEXTWAVE	028 124 125	SUPER GUIDE	020 124 125
BIRDVIEW	051 126 129		133 134	NORSAT	069 070	TEECOM	023 026 075 087
BSR	053	GENERAL INSTRUMENT	003 004 016 029	PACE SKY SATELLITE	143		088 090 107 130
CAPETRONICS	053	HITACHI	139 140	PANASONIC	060 142		137
CHANNEL MASTER	013 014 015 018	HOUSTON TRACKER	033 037 039 051	PANSAT	121	TOSHIBA	002 127
	036 055			PERSONAL CABLE	117	UNIDEN	016 025 042 043
CHAPARRAL	008 009 012 077	HUGHES	068	PHILIPS	071		044 045 048 049
CITOH	054	HYTEK	053	PICO	105		078 079 080 086
CURTIS MATHES	050 145	JANIEL	060 147	PRESIDENT	019 102		101
DRAKE	005 006 007 010	JERROLD	061	PRIMESTAR	030 110 111	UNIDEN	135 136
	011 052 112 116	KATHREIN	108	PROSAT	072	VIEWSTAR	115
	141	LEGEND	057	RCA	066 106	WINEGARD	128 146
DX ANTENNA	024 046 056 076	LG	001	REALISTIC	043 074	ZENITH	081 082 083 084
ECHOSTAR	038 040 057 058	LUTRON	132	SAMSUNG	123		091 120
	093 094 095 096	LUXOR	062 144	SATELLITE SERVICE CO	028 035 047 057		
	097 098 099 100	MACOM	010 059 063 064		085		
	122		065	SCIENTIFIC ATLANTA	032 138		
ELECTRO HOME	089			SONY	103		

## Audio

Brand	Codes	Brand	Codes	Brand	Codes	Brand	Codes
AIWA	014 028 070 096	JVC	004 013 141	PHILIPS	026 112 143 253		147 218
	125 129 139 229	KEC	185 186 187	PIONEER	039 042 043 063	TOSHIBA	137
	230	KENWOOD	038 050 067 089		065 091 093 094	THE	061
AKAI	163		170 171 197 206		115 123 127 250	VICTOR	088 131
ANAM	003 014 017 023		215 222	QUASAR	113	WARDS	089
	059 106 189 216	KOHEL	030	RCA	080	YAMAHA	054 055 066 092
	217 235 236	NAD	045 046	RCX	092		199
BURMECTER	252	LOTTE	014 016 036 098	REALISTIC	103 106		
CARVER	086		100 172 173 174	SAMSUNG	124 145 146 182		
CLARION	199		175 176 177 178		193 194 195 203		
DAEWOO	027 053 060 084		179 180 181 183		204 244 245 246		
	102 148 198 221		201 202 208 213	SANSUI	011 135 138 144		
DENON	015 075 130 143		214 219 223 232	SANYO	019 083 234		
FANTASIA	071		238 240	SCOTT	106 186		
FINEARTS	022	LXI	103	SHARP	031 032 051 052		
FISHER	089 099	MAGNAVOX	111		072 082 117 119		
LG(GOLDSTAR)	001 021 024 029	MARANTZ	002 018 020 025		156 184 199 200		
	087 107 108 110		034 041 081 090		206 209		
	190 191 192 210	MCINTOSH	049	SHERWOOD	005 006 158		
	211 212 239	MCS	104	SONY	044 045 109 114		
HAITAI	034 035 188 222	MEMOREX	107		118 126 248 249		
HARMAN/KARDON	068	NAD	046	TAEKWANG	012 020 073 074		
INKEL	037 058 062 069	ONKYO	013 040 041 047		076 077 105 161		
	078 079 095 121		048 056 057 132		162 163 164 165		
	122 149 150 151		133 140		166 167 168 169		
	152 153 154 155	OPTIMUS	158		205 231 233 242		
	157 158 159 160	PANASONIC	007 033 064 113	TEAC	254		
	189 207 222 224		142 220 241 251		010 085 106 136		
	225 226 227 243	PENNEY	104		185 187 237		
	247			TECHNICS	101 113 128 134		

## DVD

Brand	Codes	Brand	Codes	Brand	Codes	Brand	Codes
APEX DIGITAL	022	MAGNAVOX	013	PHILIPS	013	SONY	007
DENON	020 014	MARANTZ	024	PIONEER	004 026	THOMPSON	005 006
GE	005 006	MITSUBISHI	002	PROCEED	021	TOSHIBA	019 008
HARMAN KARDON	027	NAD	023	PROSCAN	005 006	YAMAHA	009 018
JVC	012	ONKYO	008 017	RCA	005 006	ZENITH	010 016 025
LG	001 010 016 025	PANASONIC	003 009	SAMSUNG	011 015		



## Troubleshooting Checklist

<b>The operation does not work normally.</b>	
<b>The remote control doesn't work</b>	<ul style="list-style-type: none"> <li>• Check to see if there is any object between the product and the remote control causing obstruction.</li> <li>• Are batteries installed with correct polarity (+ to +, - to -)?</li> <li>• Correct remote operating mode set: TV, VCR etc.?</li> <li>• Install new batteries.</li> </ul>
<b>Power is suddenly turned off</b>	<ul style="list-style-type: none"> <li>• Is the sleep timer set?</li> <li>• Check the power control settings. Power interrupted</li> <li>• No broadcast on station tuned with Auto off activated.</li> </ul>

<b>The video function does not work.</b>	
<b>No picture &amp; No sound</b>	<ul style="list-style-type: none"> <li>• Check whether the product is turned on.</li> <li>• Try another channel. The problem may be with the broadcast.</li> <li>• Is the power cord inserted into wall power outlet?</li> <li>• Check your antenna direction and/or location.</li> <li>• Test the wall power outlet, plug another product's power cord into the outlet where the product's power cord was plugged in.</li> </ul>
<b>Picture appears slowly after switching on</b>	<ul style="list-style-type: none"> <li>• This is normal, the image is muted during the product startup process. Please contact your service center, if the picture has not appeared after five minutes.</li> </ul>
<b>No or poor color or poor picture</b>	<ul style="list-style-type: none"> <li>• Adjust Color in menu option.</li> <li>• Keep a sufficient distance between the product and the VCR.</li> <li>• Try another channel. The problem may be with the broadcast.</li> <li>• Are the video cables installed properly?</li> <li>• Activate any function to restore the brightness of the picture.</li> </ul>
<b>Horizontal/vertical bars or picture shaking</b>	<ul style="list-style-type: none"> <li>• Check for local interference such as an electrical appliance or power tool.</li> </ul>
<b>Poor reception on some channels</b>	<ul style="list-style-type: none"> <li>• Station or cable product experiencing problems, tune to another station.</li> <li>• Station signal is weak, reorient antenna to receive weaker station.</li> <li>• Check for sources of possible interference.</li> </ul>
<b>Lines or streaks in pictures</b>	<ul style="list-style-type: none"> <li>• Check antenna (Change the direction of the antenna).</li> </ul>

<b>The audio function does not work.</b>	
<b>Picture OK &amp; No sound</b>	<ul style="list-style-type: none"> <li>• Press the <b>VOL</b> or <b>VOLUME</b> button.</li> <li>• Sound muted? Press <b>MUTE</b> button.</li> <li>• Try another channel. The problem may be with the broadcast.</li> <li>• Are the audio cables installed properly?</li> </ul>
<b>No output from one of the speakers</b>	<ul style="list-style-type: none"> <li>• Adjust Balance in menu option.</li> </ul>
<b>Unusual sound from inside the product</b>	<ul style="list-style-type: none"> <li>• A change in ambient humidity or temperature may result in an unusual noise when the product is turned on or off and does not indicate a fault with the product.</li> </ul>

<b>There is a problem in PC mode. (Only PC mode applied)</b>	
<b>The signal is out of range.</b>	<ul style="list-style-type: none"> <li>• Adjust resolution, horizontal frequency, or vertical frequency.</li> <li>• Check it whether the signal cable is connected or loose.</li> <li>• Check the input source.</li> </ul>
<b>Vertical bar or stripe on background &amp; Horizontal Noise &amp; Incorrect position</b>	<ul style="list-style-type: none"> <li>• Work the Auto configure or adjust clock, phase, or H/V position.</li> </ul>
<b>Screen color is unstable or single color</b>	<ul style="list-style-type: none"> <li>• Check the signal cable.</li> <li>• Reinstall the PC video card.</li> </ul>

# Maintenance

- Early malfunctions can be prevented. Careful and regular cleaning can extend the amount of time you will have your new TV. Be sure to turn the power off and unplug the power cord before you begin any cleaning.

## Cleaning the Screen

1. Here's a great way to keep the dust off your screen for a while. Wet a soft cloth in a mixture of lukewarm water and a little fabric softener or dish washing detergent. Wring the cloth until it's almost dry, and then use it to wipe the screen.
2. Make sure the excess water is off the screen, and then let it air-dry before you turn on your TV.

## Cleaning the Cabinet

To remove dirt or dust, wipe the cabinet with a soft, dry, lint-free cloth. Please be sure not to use a wet cloth.

## Extended Absence



If you expect to leave your TV dormant for a long time (such as a vacation), it's a good idea to unplug the power cord to protect against possible damage from lightning or power surges.

# Product Specifications

MODEL	32LP1DC
Width (inches / mm)	40 / 1016
Height (inches / mm)	24.7 / 627.5
Depth (inches / mm)	8.03 / 204
Weight (pounds / kg)	70.5 / 32
Power requirement	AC 100-240V~ 50/60Hz 2.0A
Power consumption	160W
Television System	NTSC-M, ATSC
Program Coverage	VHF 2 ~ 13, UHF 14 ~ 69, CATV 1 ~ 125, CADTV 1 ~ 135. DTV 2 ~ 69
External Antenna Impedance	75 Ω

- The specifications shown above may be changed without prior notice for quality improvement.

