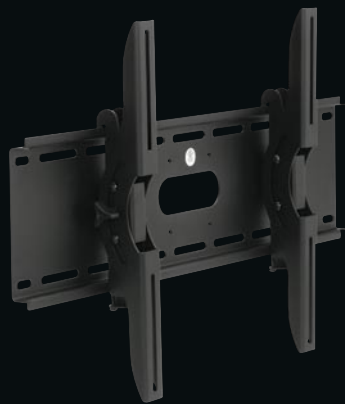




CMP4211 with optional matching stand (CMPAD05B) and optional side-mounted speakers (CMPAS14W).



CMP4212 with optional matching stand (CMPAD05S) and optional side-mounted speakers (CMPAS14V).



Optional Wall Mount Bracket WM51



Key Features

- 1024 x 1024 High Definition Plasma Display
- High-Efficiency Panel Technology
- Dynamic False Contour Reduction
- Dynamic Contrast
- Adjustable Color Temperature

Convenience Features

- Full Serial Control via RS232C
- Adjustment Buttons for Menu, Input, and Sound
- Day and Night Memory by Input
- Screen Savers and Life Extension Modes
- Remote Control
- 3-Language On-Screen Display
- Silent Operation (No Cooling Fans)
- Monitor ID bit
- PIP/Split Screen Functionality

Audio Features

- 12W + 12W Output
- Speakers Optional

Inputs/Outputs

- RGB1 (DVI-HDTV/HDCP Input) 1
- RGB2 (D-Sub 15 Analog Input/ Switchable to Y, Pb, Pr) 1
- AV1 (Component Y, Pb, Pr/Composite) 1
- AV2 (Component Y, Pb, Pr/ Composite/RGB) 1
- AV3 (S-Video/Composite) 1
- AV Output (Composite/L & R Audio) 1

Specifications

- Color
CMP4211 Black
CMP4212 Silver
- Display Resolution 1024x1024
- Video Signals NTSC, PAL, PAL60, PAL-M, PAL-N, SECAM
- Computer Signals VGA-WXGA, UXGA Compressed
- RGB Scanning fH:31-106kHz
v:56-85Hz
- Pixel Pitch (HxW) 0.90x0.51mm
- FCC Rating Class B

Dimensions (display only)

- Height 25 1/16"
- Width 40 9/16"
- Depth 3 5/8"
- Weight 77 lbs.

Optional Accessories

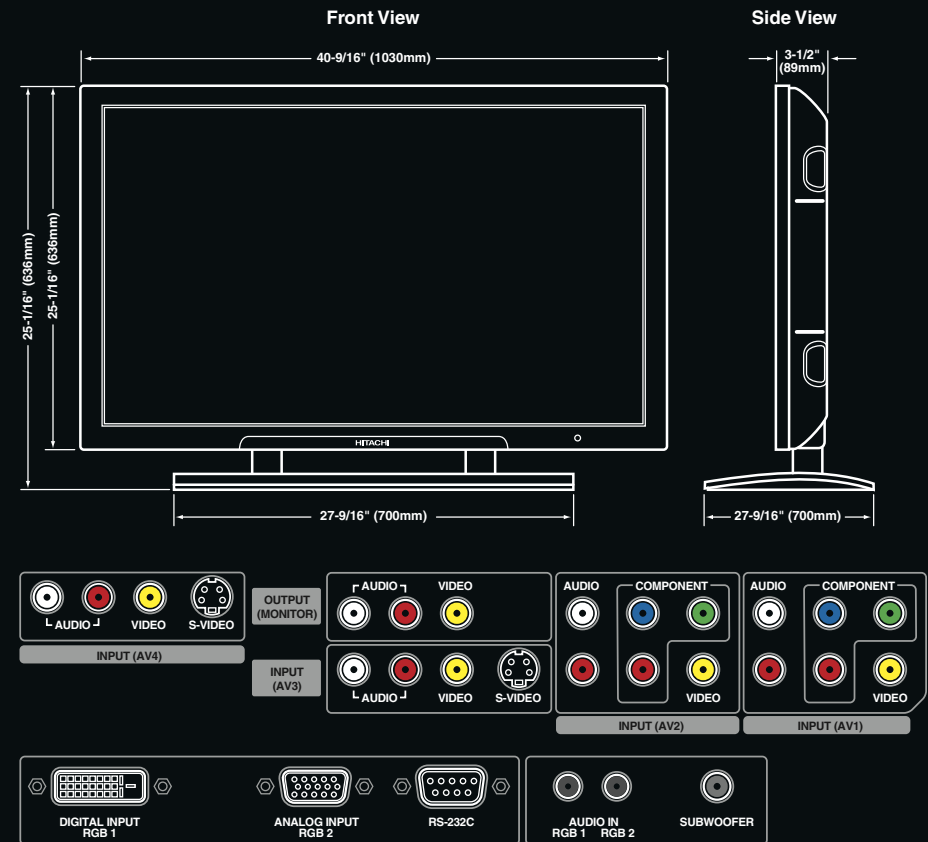
- Table Stands
CMP4211 CMPAD05B
CMP4212 CMPAD05S
- Side-Mountable Speakers
CMP4211 CMPAS14W
CMP4212 CMPAS14V
- Wall-Mount Bracket WM51

Warranty

- 1-Year On-Site Parts and Labor Warranty

HDTV Monitors require an optional HDTV tuner to view HDTV programs. Check with your content provider for HDTV program and tuner availability. The DVI-HDTV input will accept digital cable and satellite HDTV signals. All specifications and dimensions are subject to change without notice. Refer to www.hitachi.us/tv for updated custom install specifications.

©2004, Hitachi Ltd. VirtualHD is a trademark of Hitachi Home Electronics (America), Inc.



HITACHI
Inspire the Next

HITACHI
Inspire the Next



42" High-Definition Professional Plasma Monitors



42" Plasma HDTV Monitors

CMP4211
CMP4212

Sharper, brighter plasma solutions engine

The display technology employed in Hitachi's 42-inch Professional Plasma Series is unlike any other plasma monitor available to the market. They are specifically designed and engineered to deliver a bright, sharp picture, day-in and day-out for extended periods of time, serving a broad range of commercial applications. These High-Definition Plasma Monitors offer flexible solutions, whether the need is for single-point signage, networked multi-site retail display systems or custom AV applications.

ered for the most demanding professional applications.

ALiS Plasma Display Technology

Plasma screens typically surround each pixel with a waffle-like cell structure that creates non-picture boundaries around the pixels. They reduce the illuminated surface area of the screen and produce a very noticeable grid pattern across the picture.

The screen surface of an ALiS display is comprised of continuous vertical channels of phosphor material. Pixels are defined electronically instead of physically. Each picture element is also reduced in size for a significantly higher pixel density. The result is a smooth, seamless canvas on which the picture is displayed.

VirtualHD™ 1080p Digital Video Processor

Hitachi's proprietary video processor ensures that the incoming video signal is a perfect match to the high-definition capabilities of the display. For 1080i HDTV content, the signal is passed directly to the display where the image is reproduced line-for-line without vertical scaling (1024 viewable).

All other video signals are converted to 1,080 *progressive* lines—twice the display speed of HDTV. The additional picture information enables the processor to make extremely accurate determinations when optimizing the signal for display. The result is significantly smoother diagonal lines and curves making even the finest details sharp and crisp.

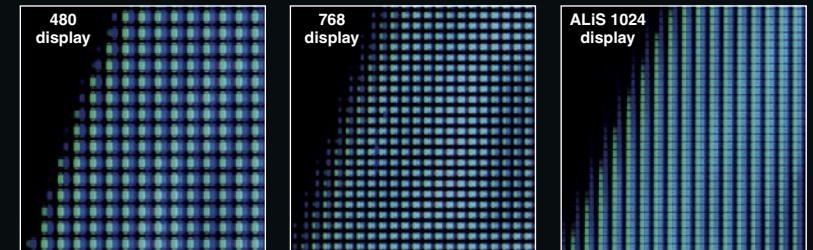
Designed for extended life in commercial applications




In addition to the inherent (and significant) duty cycle benefits that ALiS technology provides, the 42-inch Professional Plasma Series offers a host of customizable life extension options to optimize performance and further improve the life of the display.

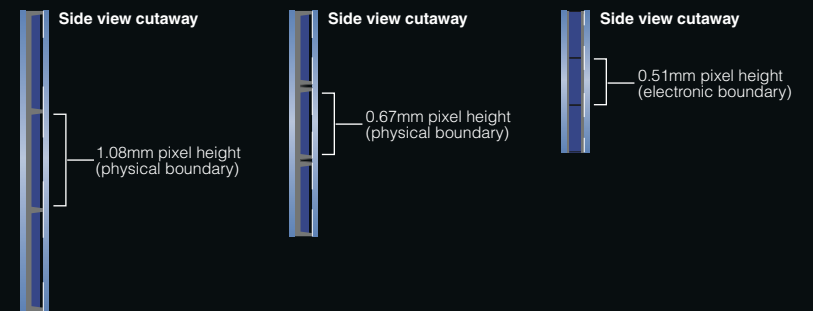
The increased output of the ALiS panel provides enough brightness headroom to enable two menu-selectable life extension modes:

The remote can store up to eight discrete ID codes for control of separate plasma displays—ideal for making adjustments in applications where several panels are used in close proximity to each other.

The higher pixel density of an ALiS 1024x1024 display produces smoother curves and diagonal edges than conventional panel designs.



 <p>Pixel size 1.08 x 1.08mm About 552 pixels/sq. in. Over 409,000 pixels total</p>	 <p>Pixel size 0.90 x 0.67mm About 1068 pixels/sq. in. Over 768,000 pixels total</p>	 <p>Pixel size 0.90 x 0.51mm About 1404 pixels/sq. in. Over 1 Million pixels total</p>
--	---	---



Brightness Performance Life Extension Modes



The brightness performance of the display over time can be significantly improved by utilizing one of two Life Extension modes.