

32" LCD Television  
LT-3225



Large screen impact and style to enhance any home environment

---

---

## Product Features

---

---

- 32" Widescreen (16:9) LCD TV
- TV reception is provided via built-in ATSC, Clear-QAM and NTSC tuner
- HDMI input delivers uncompressed, crystal-clear digital video & audio via a single cable
- SRS creates a virtual surround sound experience from the internal speakers
- HD Panel Resolution (1366 x 768)
- High Brightness ( 500 Cd/m<sup>2</sup> )
- High Contrast Ratio ( 1000:1 )
- Wide Viewing Angle ( 176° H / 176° V )
- Component video, S-video and Composite video inputs
- MTS, SAP, Closed Caption & V-Chip

## 32" LCD Television LT-3225

### Product Specifications

#### Video

Type		32" TFT-LCD
Aspect Ratio		16:9
Signal Compatability		480i, 480p, 720p, 1080i
Panel Resolution		1366 x 768
Display Area		708.9mm x 398.6mm
Pixel Pitch		.52mm x .52mm
Number of Colors		16.7 million
Viewing Angle (H/V)		176° /176°
Peak Brightness(cd/m <sup>2</sup> )		500
Contrast Ratio		1000:1
Response Time		8ms
Built-in Tuner		ATSC / Clear-QAM / NTSC

#### Audio

Speaker Power		10W x 2
MTS/SAP		Yes

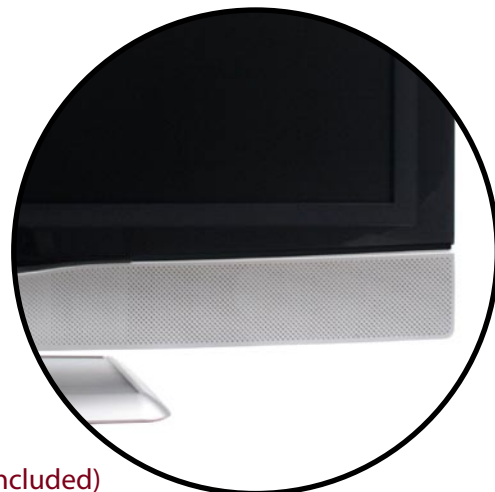
#### Connections

RF Antenna Input		1
Headphone Output		1
Composite Video Input(Rear/Side)		1/1
Composite Audio/Video Output		1
Component Video Input		2
S-Video Input (Rear/Side)		1/1
HDMI (with HDCP)		1
PC Input (with audio input)		1
Audio (L/R) Inputs		4
Digital Audio Outputs (SPDIF)		Coaxial

#### General

On-Screen Menu Languages		English/French/Spanish
Power Supply		AC 100V-240V 50/60Hz
Dimensions with stand		(W) 31.9"x(H) 23.8"x(D) 9.3"
Dimensions without stand		(W) 31.9"x(H) 22.0"x(D) 4.6"
Unit Weight		35.6 lbs.
Wall Mount		VESA 200mm x 200mm (Not Included)
Other		Progressive Scan, Parental Control, Sleep Timer

UPC# 803802741252



Norcent is a registered trademark of Norcent Technology Inc. (2005)  
550 Cliffside Drive, San Dimas, CA 91773  
All rights reserved.

HDMI logo and High-Definition Multimedia Interface are trademarks or registered trademarks of HDMI Licensing LLC.

SRS is a registered trademark of SRS, Inc.

All product information is accurate to the best of our knowledge at the time of publication.