





---

# ONE YEAR LIMITED WARRANTY

F L C D D 2

Congratulations on your purchase of a Vidikron video product and welcome to the Vidikron family! With proper installation, setup and care, you should enjoy many years of unparalleled video performance.

This is a LIMITED WARRANTY as defined in the Magnuson-Moss Warranty Act. Please read it carefully and retain it with your other important documents.

## WHAT IS COVERED UNDER THE TERMS OF THIS LIMITED WARRANTY:

**SERVICE LABOR:** Vidikron will pay for service labor by Vidikron Authorized Service Center when needed as a result of a manufacturing defect for a period of one (1) year from the effective date of delivery to the end user.

**PARTS:** Vidikron will provide new or rebuilt replacement parts for the parts that fail due to defects in materials or workmanship for a period of one (1) year from the effective date of delivery to the end user. Such replacement parts are then subsequently warranted for the remaining portion (if any) of the original warranty period.

## WHAT IS NOT COVERED UNDER THE TERMS OF THIS LIMITED WARRANTY:

Image retention on LCD display panels is specifically excluded from coverage under this Limited Warranty. Image retention or staining of an image is the result of misuse of the product and therefore cannot be repaired under the terms of this Limited Warranty.

Normal viewing material such as television/satellite broadcasts, videotape or DVDs (not put into pause for extended periods of time) will not cause damage to your display under normal conditions. Many DVD players are also equipped with screen savers for this reason.

**TO AVOID IMAGE RETENTION (Burn-in):** Please ensure that still images are not left on your LCD display panel. Also ensure that images displayed in the 4:3 aspect ratio mode (black or gray stripes, but no picture information is present on the left and right edges of the screen) are used as infrequently as possible. This will prevent permanent retention on your LCD display panel, which can be seen permanently under certain conditions once burn-in has occurred.

The types of images to avoid include video games, still images and computer screens with stationary tool bars and icons. (This is why computers are equipped with screen savers to prevent still images from burning into the monitor's phosphors after being displayed continuously for an extended period of time).

This Limited Warranty only covers failure due to defects in materials and workmanship that occur during normal use and does not cover normal maintenance. This Limited Warranty does not cover cabinets or any appearance items; failure resulting from accident, misuse, abuse, neglect, mishandling, misapplication, faulty or improper installation or setup adjustments; improper maintenance, alteration, improper use of any input signal; damage due to lightning or power line surges, spikes and brownouts; damage that occurs during shipping or transit; or damage that is attributed to acts of God. In the case of remote control units, damage resulting from leaking, old, damaged or improper batteries is also excluded from coverage under this Limited Warranty.

**CAUTION: THIS LIMITED WARRANTY ONLY COVERS VIDIKRON PRODUCTS PURCHASED FROM VIDIKRON AUTHORIZED DEALERS. ALL OTHER PRODUCTS ARE SPECIFICALLY EXCLUDED FROM COVERAGE UNDER THIS LIMITED WARRANTY. MOREOVER, DAMAGE RESULTING DIRECTLY OR INDIRECTLY FROM IMPROPER INSTALLATION OR SETUP IS SPECIFICALLY EXCLUDED FROM COVERAGE UNDER THIS LIMITED WARRANTY.**

---

## **RIGHTS, LIMITS AND EXCLUSIONS:**

Vidikron limits its obligations under any implied warranties under state laws to a period not to exceed the warranty period. There are no express warranties. Vidikron also excludes any obligation on its part for incidental or consequential damages related to the failure of this product to function properly. Some states do not allow limitations on how long an implied warranty lasts, and some states do not allow the exclusion or limitation of incidental or consequential damages. So the above limitations or exclusions may not apply to you. This warranty gives you specific legal rights, and you may also have other rights that vary from state to state.

## **EFFECTIVE WARRANTY DATE:**

This warranty begins on the effective date of delivery to the end user. For your convenience, keep the original bill of sale as evidence of the purchase date.

## **IMPORTANT -- WARRANTY REGISTRATION:**

Please fill out and mail your warranty registration card. It is imperative that Vidikron knows how to reach you promptly if we should discover a safety problem or product update for which you must be notified.

## **CONTACT A VIDIKRON AUTHORIZED SERVICE CENTER TO OBTAIN SERVICE:**

Repairs made under the terms of this Limited Warranty covering your Vidikron video product will be performed at the location of the product, during usual working hours, providing location of product is within normal operating distance from a Vidikron Authorized Service Center. In some instances it may be necessary for the product to be returned to the Vidikron factory for repairs. If, solely in Vidikron's judgment, location of product to be repaired is beyond normal operating distance of the closest Vidikron Authorized Service Center, or the repair requires the unit be returned to the Vidikron factory, it is the owner's responsibility to arrange for shipment of the product for repair. These arrangements must be made through the selling Vidikron Dealer. If this is not possible, contact Vidikron directly for a Return Authorization number and shipping instructions. Vidikron will return product transportation prepaid in the United States, unless no product defect is discovered. In that instance, shipping costs will be the responsibility of the owner.

## **COPYRIGHT AND TRADEMARKS:**

Copyright 2005 Vidikron. This document contains proprietary information protected by copyright. All rights are reserved. No part of this manual may be reproduced by any mechanical, electronic or other means, in any form, without prior written permission of the manufacturer.

All trademarks and registered trademarks are the property of their respective owners.

---

**ADDITIONAL INFORMATION:**

To locate the name and address of the nearest Vidikron Authorized Service Center, or for additional information about this Limited Warranty, please call or write:

**VIDIKRON**  
**A : C S D a**  
**2900 F a S**  
**U C , CA 94587**  
**P : (510) 324-5900**  
**F a : (510) 324-5905**  
**T F : (888) 4VIDIKRON**

---

**VIDIKRON PRODUCT INFORMATION**  
**RETAIN THIS INFORMATION FOR YOUR RECORDS**

\_\_\_\_\_

Model Purchased

\_\_\_\_\_

Date

\_\_\_\_\_

Serial Number

\_\_\_\_\_

Vidikron Authorized Dealer Name

\_\_\_\_\_

Address

\_\_\_\_\_

City

\_\_\_\_\_

State/Province

\_\_\_\_\_

Postal Code

\_\_\_\_\_

Phone

\_\_\_\_\_

Fax

---

Thank you for your purchase of this quality Vidikron product! It has been designed to provide you with the quality of video that is expected in a home theater. For the best performance, please read this manual carefully as it is your guide through the menus and operation.

**CAUTION**

To turn off main power, be sure to remove the plugs from power outlets. The power outlet socket should be installed as near to the equipment as possible, and should be easily accessible.

**WARNING**

TO PREVENT FIRE OR SHOCK HAZARDS, DO NOT EXPOSE THIS UNIT TO RAIN OR MOISTURE. ALSO DO NOT USE THIS UNIT'S POLARIZED PLUG WITH AN EXTENSION CORD RECEPTACLE OR OTHER OUTLETS, UNLESS THE PRONGS CAN BE FULLY INSERTED. REFRAIN FROM OPENING THE CABINET AS THERE ARE HIGH-VOLTAGE COMPONENTS INSIDE. REFER SERVICING TO QUALIFIED SERVICE PERSONNEL.

**WARNING**

This equipment has been tested and found to comply with the limits for a Class 'B' digital device, pursuant to Part 15 of FCC Rules. These limits are designed to provide reasonable protection against harmful interference when the equipment is operated in a

**ONE YEAR LIMITED WARRANTY ..... 1**

**S a P a ..... 1**

**1. I d ..... 1**

    About This Manual ..... 1

        Target Audience..... 1

        If You Have Comments About This Manual... ..... 1

        Textual and Graphic Conventions ..... 1

    Using This Manual ..... 2

    Description, Features and Benefits ..... 3

        Key Features and Benefits..... 3

        Parts List ..... 4

**2. C a d F ..... 5**

    DView at a Glance ..... 5

        Controls and Indicators ..... 5

        Connectors ..... 6

    DView Remote Control ..... 8

**3. I a a ..... 13**

    Remote Control ..... 13

        Notes on Batteries ..... 13

        Notes on Remote Control Operation..... 13

    Quick Setup ..... 14

    Installation Considerations ..... 15

        Wall-Mounting the DView ..... 15

        Ambient Light ..... 15

        Other Considerations ..... 15

    Connections to the DView ..... 16

        Rear Connector Access ..... 16

        Connecting the DView to Source Components ..... 16

        MONITOR OUT Connection..... 20

        Connecting Headphones ..... 20

        RS-232 Controller Connection ..... 21

---

<b>4. On-Screen Menus</b> .....	<b>23</b>
Turning on the Power .....	23
Changing the OSD Language .....	23
Setting the PC Display Properties .....	23
Using the On-Screen Menus .....	24
Main Menu .....	26
Source .....	26
Aspect Ratio .....	26
Picture Adjust .....	28
Audio .....	33
Timer .....	34
Setup .....	34
ISF Calibration .....	37
Using Picture-In-Picture (PIP) .....	40
Changing the PIP Position .....	41
Changing the PIP Size .....	42
Changing the PIP Aspect Ratio .....	42
Changing the PIP Image Mode .....	42
Swapping the Main and PIP Images .....	43
Swapping the Main and PIP Audio Programs .....	43
Stereo Sound/SAP .....	44
<b>5. Model Numbers</b> .....	<b>49</b>



2-1. DView Controls and Indicators ..... 5

2-2. DView Connectors ..... 6

2-3. DView Remote Control..... 8

3-1. DVI or HDMI Source Connections..... 17

3-2. Analog RGB Connections..... 18

3-3. Component Video Connections ..... 19

3-4. Composite and S-Video Connections ..... 19

3-5. Monitor Output Connections..... 20

3-6. Connecting Headphones..... 20

3-7. RS-232 Control System Connection..... 21

4-1. DView OSD Menu Structure ..... 25

4-2. Typical PLUGE Pattern for Adjusting Brightness..... 29

4-3. Typical Gray Bar Pattern for Adjusting Contrast ..... 30

4-4. Typical Color Bar Pattern for Adjusting Color Saturation and Tint ..... 30

4-5. Typical Test Pattern for Adjusting Sharpness..... 32

4-6. DView Splash Screen..... 39

7-1. DView Dimensions..... 52

L fFg e

---

**N** :

This Owner's Manual describes how to install, set up and operate the Vidikron VL-37 LCD Display. Throughout this manual, the Vidikron VL-37 LCD Display is referred to simply as the DView.

Vidikron has prepared this manual to help home theater installers and end users get the most out of the DView.

Vidikron has made every effort to ensure that this manual is accurate as of the date it was printed. However, because of ongoing product improvements and customer feedback, it may require updating from time to time. You can always find the latest version of this and other Vidikron product manuals on-line, at [www.vidikron.com](http://www.vidikron.com).

Vidikron welcomes your comments about this manual. Send them to [info@vidikron.com](mailto:info@vidikron.com).

**Textual Conventions:** The following conventions are used in this manual, in order to clarify the information and instructions provided:

Remote control button identifiers are set in upper-case bold type; for example, Press **EXIT** to return to the previous menu.

All keys with functional names are initial-capped, set in bold type and enclosed in angle brackets. These keys are the following: <**R**>, <**S**>, <**C**>, <**E**>, <**T**>.

<**R**> indicates that you may press either the RETURN or ENTER key on your computer keyboard if it has both keys.

Computer input (commands you type) and output (responses that appear on-screen) is shown in monospace (fixed-width) type; for example: To change the aspect ratio to Letterbox, type [ S4E0002.

In addition to these conventions, underlining, boldface and/or italics are occasionally used to highlight important information, as in this example:

*Note*      *Accuracy must be maintained.*

1.1

**A Target Audience**

◀ *Target Audience*

◀ *If You Have Comments About This Manual...*

◀ *Textual and Graphic Conventions*

**Icons:** These symbols appear in numerous places throughout the manual, to emphasize points that you must keep in mind to avoid problems with your equipment or injury:



**Tip**

TIPS highlight important details, such as safety, configuration, and performance.



**Note**

NOTES provide important information, such as configuration, performance, and safety.



**Caution**

CAUTIONS are used to highlight safety-related information, such as configuration, performance, and safety.



**WARNING**

WARNINGS are used to highlight safety-related information, such as configuration, performance, and safety.



**DANGER!**

DANGER is used to highlight safety-related information, such as configuration, performance, and safety.

## 1.2 Using the Manual

Use the following table to locate the specific information you need in this manual.

Information	Page
Information about obtaining service	iv
General information about the VL-37 LCD Display	3
Installation instructions	13
First-time configuration instructions	23
Advanced configuration instructions	37
Troubleshooting tips	45
Specifications for the VL-37 LCD Display	51

Vidikron presents the high performance DView Series VL-37 LCD Display, perfect for those who demand our award-winning flat panel performance in a more intimate size than we offer with our larger plasma monitors.

The new DView high definition capable LCD displays offer common features and performance in popular 26, 32 and 37-inch sizes, suitable for close-in viewing where picture quality remains a high priority, but larger displays cannot be accommodated.

The DView Series VL-37 LCD Display incorporates the superb Imagix digital video processing that produces outstanding picture quality with a wide range of both standard and high definition source material.

In addition, the handsome, pewter-finish television is engineered with ISF calibration standards for the purest video performance. The VL-37 LCD Display also features PIP, PBP, closed captioning and Parental Control (V-Chip) functionality, as well as multi-language support. The display includes an integrated stereo audio system incorporating surround sound technology with 2-way speakers and generous power amplification.

The advanced TFT active matrix LCD display panel offers 1366 x 768 resolution and includes Vidikron's discrete aspect ratio control with IntelliWide mode to fill the 16:9 screen with standard 4:3 images without loss of picture quality. Also included are discrete source, aspect ratio and power selection and an RS-232 interface for whole house or automated control system integration.

The DView is multimedia ready, with simple computer connections making gaming, Internet browsing and other computer activities quick and easy.

The DView offers these key features and benefits:

- Native Resolution: 1366 x 768 (16:9 Native Aspect Ratio)
- Multiple Aspect Ratios with IntelliWide Mode
- Less than 4 inches thin
- DVI Input with High-bandwidth Digital Content Protection (HDCP)
- HDTV Ready
- Exceptional detail and artifact-free video enhancement
- Vidikron video processing with 3:2 film detection circuitry

**1.3  
D  
B**

, F 2 2 d

**◀ Key Features and Benefits**

**Parts List** ➤ Your DView is shipped with the following items. If any items are missing or damaged, please contact your Vidikron dealer or Vidikron Customer Service at (888) 4VIDIKRON.

VL-37 LCD Display

Remote Control Unit and two (2), AAA-size batteries

AC Power Cord

Warranty information and registration card

Vidikron VL-37 Owner's Operating Manual (this document)

**Optional Accessories:**

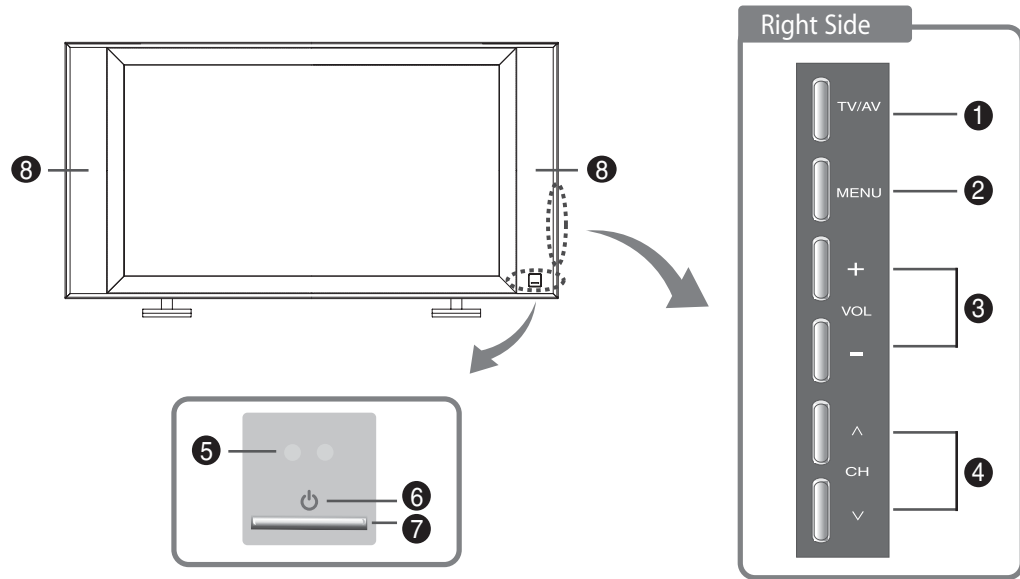
Wall Mount kit

Table Stand

Figure 2-1 and Figure 2-2 show the locations of the DView controls, indicators and connectors.

2.1

DV



← Controls and Indicators

F 2-1. DV C

1. TV/AV B (I S S )
  2. MENU S B
  3. V A B
  4. C S B
  5. R C S
  6. P I
- Lights red to indicate that the DView is in standby mode; lights green to indicate normal operation; flashes green when the DView receives a signal from the remote control.
7. P B
  8. S

---

**Connectors** ➤
**F 2-2. DV C**

1. **INPUT 2 S-VIDEO**  
Standard S-Video input for connecting a DVD player, satellite receiver or Super VHS (S-VHS) VCR.
2. **INPUT 2 AUDIO**
3. **INPUT 2 COMPOSITE VIDEO**  
Standard composite video input for connecting a VCR, camcorder, laser disc player or other composite video source.
4. **HDMI**
5. **MP3**
6. **POWER (100-240 VAC)**  
Connect the DView to power here.
7. **RGB HD**  
A 15-pin VGA connection to a personal computer. The DView automatically detects the signal resolution: 480i, 480p, 576i, 576p, 720p or 1080i.
8. **DVI/C (DIGITAL)**  
HDCP-compliant digital video input for connecting a DVD player, personal computer or HD tuner with a DVI or HDMI output.
9. **AUDIO (RGB/DVI)**  
Connect the audio output from your RGB or DVI source here.



10. **INPUT 3 C** **V** (RCA )  
 Standard-definition (480i/576i) or high-definition (720p/1080i), YPrPb component input.  
 This is the input for component video from sources such as DVD players.



*Tip*

For best results, use a DVD, a game, or a video.

11. **INPUT 3 A** **V** I  
 12. **INPUT 3 A** **V** I  
 Connect the audio output from your Input 3 source here.
13. **INPUT 4 C** **V** (RCA )  
 14. **INPUT 4 C** **V** I  
 15. **INPUT 4 A** **V** I  
 Connect the audio output from your Input 4 source here.
16. **INPUT 1 COMPOSITE VIDEO INPUT**
17. **INPUT 1 A** **V** I  
 Connect the audio output from your Input 1 source here.
18. **INPUT 1 S-V** **V** I  
 19. **MONITOR-OUT (C** **V** )  
 20. **MONITOR-OUT (A** **V** )  
 21. **RS-232 CONTROL PORT**  
 A male, 9-pin D-sub connector for interfacing with a PC or home theater automation/control system.

---

**2.2**  
**DV R C**

Figure 2-3 shows the DView remote control, and the paragraphs that follow describe its functionality.



1. **OFF / ON**  
Use these buttons to turn the DView on or off.
2. **N B**  
Use these buttons to enter menu pass codes.
3. **TIMER OFF B**  
Press this button to set the sleep timer. Press it repeatedly to scroll through the available options (Off, 10, 30, 60, 120 or 180 minutes).
4. **S S B :**

**INPUT 1**

Press this button to switch to Input 1.

**INPUT 2**

Press this button to switch to Input 2.

**INPUT 3**

Press this button to switch to Input 3.

**INPUT 4**

Press this button to switch to Input 4.

**DVI**

Press this button to switch to the Digital Video input.

**RGB HD**

Press this button to switch to the RGB HD input.

**TV**

Not used with this model.

**Note**

1, 1 a d l , 2 h a e b h S-V d e a d c , e d e c e c .  
1, 3 a d l , 4 h a e b h c , e a d c , e d e  
c e c .

T , e c f h c h c e c , e a e g -- c h f e  
h e h e f e , e c e c e d b h -- e h e l , S e e c e  
d e S e , ( e f e **Input Selection** , a g e 37).

5. **M P B :**

**CUST**

Press to recall settings for the current input from the Custom memory preset.

**ISF NT (N )**

Press to recall settings for the current input from the ISF Night memory preset.

**ISF DAY**

Press to recall settings for the current input from the ISF Day memory preset.

6. **A R S B :**

**ANA (A )**

For 16:9 DVDs or HDTV program material.

**4X3 (S 4:3)**

The input signal is scaled to fit 4:3 display mode in the center of the screen.

**LETBOX (L )**

Image in letterbox format is enlarged to fit 16:9 full screen display and the upper/ lower portions are blanked off.

**I-WIDE (I W )**

4:3 image is enlarged NON-linearly in horizontal direction to fit 16:9 full screen display.

7. **A B ( , , , )**

Use these buttons to select items or settings, adjust settings or adjust sound volume.

**ENTER**

Press to select a highlighted menu item or confirm a changed setting.

8. **MENU**

Press this button to access the on-screen display (OSD) controls, or to exit the current menu and return to the previous one.

9. **EXIT**

Press this button to hide the OSD controls.

10. **P -I -P (PIP) F B**

**ASPECT**

Press to change the aspect ratio of the PIP window from 4:3 to 16:9 or vice versa.

**SIZE**

Press to choose from three PIP window sizes.

**POSITION**

Press to choose the PIP window position (top left, top right, bottom left or bottom right corner).

**PIP**

Press to change the PIP mode (picture-in-picture, picture-by-picture or off).

**P.MODE**

Press to recall settings for the PIP input from either the ISF Night or ISF Day memory preset.

**S.SWAP**

Press to switch between the main and PIP audio programs.

**SWAP**

Press to swap the main and PIP audio programs.

---

11.

---

**N :**

To install batteries in the remote control:

1. Slide the battery cover in the direction of the arrow and remove it.
2. Insert the included batteries. Ensure that the polarities correctly match the ⊕ and ⊖ markings inside the battery compartment.
3. Slide the battery cover back on until it snaps into place.

**3.1**

**R C**

When installing batteries, make sure that the battery polarities are correct.

Do not mix an old battery with a new one or different types of batteries.

If you will not use the remote control for a long time, remove the batteries to avoid damage from battery leakage.

◀ *Notes on Batteries*

Do not drop the remote control or expose it to moisture or high temperature.

The remote control may malfunction under a fluorescent lamp. If that occurs, move the LCD display away from the fluorescent lamp.

Make sure that there is nothing obstructing the infrared beam between the remote control and the IR receiver on the LCD display.

◀ *Notes on Remote Control Operation*

*The g a f h e e e c c a b e e f e c e d b a h e  
face .*

If the effective range of the remote control decreases, or it stops working, replace the batteries with new ones.

Ambient conditions may possibly impede the operation of the remote control. If this happens, point the remote control at the LCD display and repeat the operation.

**3.2**  
**Q S**

Table 3-1 gives a quick overview of the DView installation process. The sections following this one provide detailed instructions.



**Note**

l a a h dbe,ef edb a a fedc de a a ,eca .

**Table 3-1.1 a a O**

S	P d	F D a , a ...
1	Mount the DView on a wall (optional)	15
2	Connect signal sources to the DView	16
3	Connect external controller to RS-232 port (optional)	21
4	Apply power to the DView	23
5	Change the OSD language	23
6	If using the DView with a PC, adjust PC display properties	23
7	Display calibration: adjust the following <b>for each input</b> , starting with Component (Input 3 and/or Input 4); save settings when finished: Aspect ratio Brightness Contrast Color level Tint Input position	26 through 37



---

Proper installation of your DView will ensure the highest possible picture quality. Whether you are installing the DView temporarily or permanently, you should take the following into account to ensure that it performs optimally.

### 3.3 I a a C d a

You can either place the DView on a table or in an entertainment center, or mount it on a wall.

#### *Wall-Mounting the DView*

If you do decide to wall-mount

**3.4**  
**C** **DV**

Proceed as follows to connect the DView to your video sources, external controller(s) -- if present -- and AC power.

When connecting your equipment:

Turn off all equipment before making any connections.

Use the correct signal cables for each source.

Ensure that the cables are securely connected. Tighten the thumbscrews on connectors that have them.

Use the left audio input when connecting mono audio sources.

**Rear Connector Access** ➤ To access the left rear connector panel, push down on the plastic clip holding the cover in place. Then, pull firmly on the cable access cover to open it.

**Connecting the DView to Source Components** ➤ Connect your video sources to the DView as shown and described in the sections that follow.

**DVI C** : The DView has a DVI input for connecting a DVD player, DTV decoder, personal computer or any other device with a DVI or HDMI output. Connect such devices as shown in Figure 3-1.



**Tip**

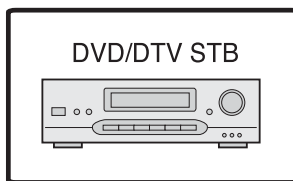
Use the DVI input for connecting a DVD player, DTV decoder, personal computer or any other device with a DVI or HDMI output. Connect such devices as shown in Figure 3-1.



**Note**

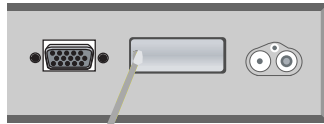
The DView is VESA DDC (Data Channel) compatible. The DView is P-gate compatible; however, a VESA DDC-compliant cable is required for connection. A ground cable is also required.

Use the P-gate cable for connection. However, a ground cable is also required.



F 3-1. DVI HDMI S C

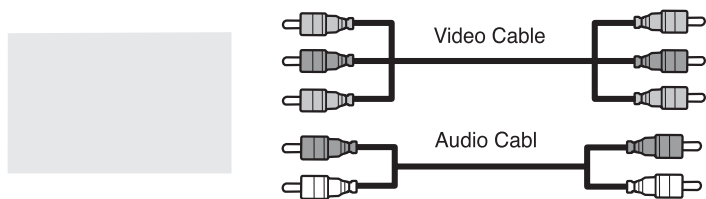
**RGB-HD C** : The DView has an RGB input for connecting a personal computer (see Figure 3-2) or DTV decoder with an RGB output. (This application requires a DB15-to-RGBHV breakout cable.)



**3-2. A 2 RGB C**

1. Refer to **Computer/Video Signal Compatibility**, page 53 for a full list of supported resolutions and refresh rates. Use the appropriate resolution and refresh rate for the display you are using.
2. Set the Mac to the appropriate resolution and refresh rate. For example, if you are using a CRT monitor, set the resolution to 1024x768 and the refresh rate to 60 Hz.
3. The DView is designed to be used with a standard CRT monitor. If you are using a monitor that is not a standard CRT monitor, you may need to adjust the resolution and refresh rate settings.

**C** **V** **C** : If you have a DVD player or DTV decoder with a component (YPbPr) output, connect it to INPUT 3 or INPUT 4 of the DView as shown in Figure 3-3.



**F** **3-3.C** **V** **C**

**C** **/S-V** **C** : The DView has two (2) S-Video and four (4) composite video inputs for connecting a VCR, camcorder, laser disc player or DVD player; see Figure 3-4.

**F** **3-4.C** **S-V** **C**

---

**MONITOR OUT Connection**

The DView has a monitor out feature for connecting a second VCR or other auxiliary equipment. Connect the MONITOR OUT audio and video jacks to the audio and video inputs of the VCR or other equipment as shown in Figure 3-5.

You can route either the main or picture-in-picture (PIP) source to the monitor outputs. For more information, refer to **Monitor Out** on page 37.

**F 3-5. M O C**

**Connecting Headphones**

You can connect a set of headphones to the

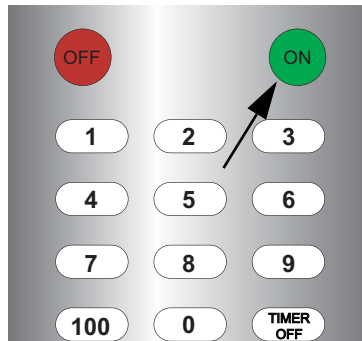


---

**N** :



1. Turn on your source components.
2. Plug the female end of the power cord into the AC receptacle on the rear of the DView (AC 100V 240V).
3. Connect the other end to your AC power source. The power indicator lights red to indicate that the DView is in standby mode.
4. Press the **ON** button on the remote control to turn on the display (or press the power button on the front of the display). The power indicator flashes for a few seconds, then lights solid green.
5. After a brief warm-up period (approximately 10 seconds), the DView will display an image.



**4.1**  
**T P**

The DView OSD language is initially set to English, but can also display the menus in French, Spanish, Portuguese or German. To change the OSD language:

1. Press **MENU**.
2. Select **S** from the Main Menu.
3. Select **OSD L 2 2** from the Setup Menu.
4. Press **▲** or **▼** to highlight the desired language and press **ENTER**. The change takes effect immediately.

**4.2**  
**C 2 OSD**  
**L 2 2**

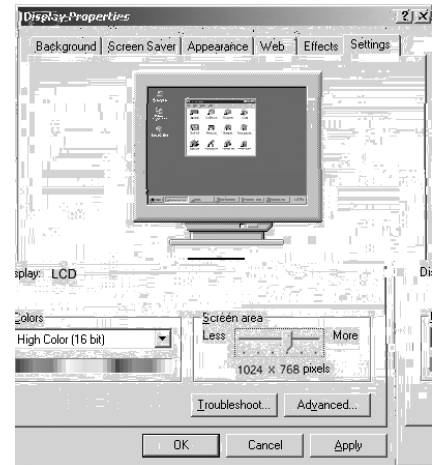
To maximize image quality when using the DView with a personal computer, you may need to adjust the display properties of your PC video card. To do this:

1. Choose Settings from the Windows Start menu and click on Control Panel.

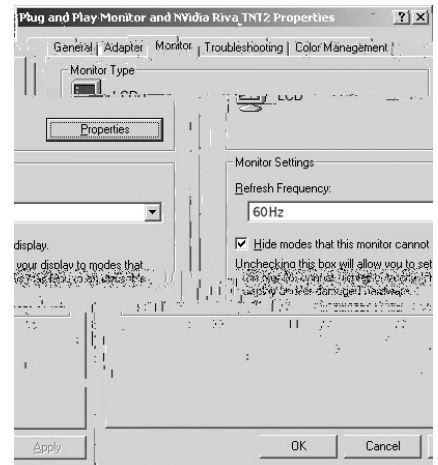


**4.3**  
**S P PCD 2**

2. Double click on the **D** icon.
3. Click the **S** tab on the display dialog box.
4. Adjust the resolution to 1024x768 pixels.



5. Click the **A** button and click the **M** tab on the dialog box. Set the vertical frequency to 60Hz and click **OK**.



**Note**

1. The adapter is a 1024 x 768 resolution monitor with a refresh rate of 60Hz. The monitor is a 17-inch LCD monitor with a resolution of 1024 x 768 @ 60Hz.
2. The DV interface is a 24-bit (16,777,216 colors) interface.

**4.4**  
**U** **O -S**  
**M**

To use the on-screen menus:

1. Press **MENU** to display the Main Menu.
2. To select a menu item, use the up- or down-arrow buttons (▲, ▼) on the remote control to highlight it.
3. Press **ENTER** or the right-arrow button (▶) to access that menu.
4. Use the up- or down-arrow buttons (▲, ▼) to select the setting you want to change. Then, press **ENTER** or the right-arrow button (▶).
5. Press the right- or left-arrow button (◀, ▶) to change that setting.
6. To return to the previous menu, press **MENU**.

The DView OSD menus are arranged hierarchically, as shown in Figure 4-1. Depending on the selected input source, some menu options may not be available.

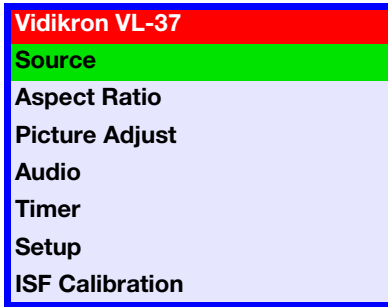
**S** Input 1  
 Input 2  
 Input 3  
 Input 4  
 DVI  
 RGB  
**A R** Anamorphic  
 Standard  
 Letterbox  
 IntelliWide  
 Brightness  
 Contrast  
 Color  
 Tint  
 Sharpness 0, 10, 20, ... 100  
**P A** Color Temp. 5400, 6500, 8500 or  
 Custom  
 Backlight 0, 5, 10, 15, 20, ... 100  
 Save Settings (not  
 available on RGB  
 input) Custom  
 Restore Settings  
 (not available on RGB input)

<b>ISF C</b>	Picture Adjust	Brightness	
		Contrast	
		Color	
		Tint	
		Sharpness	0, 10, 20, ... 100
		Color Temp.	5400, 6500, 8500 or Custom
		Backlight	0, 5, 10, 15, 20, ... 100
		Save Settings (not available on RGB input)	ISF Night, ISF Day, Custom
		White Balance	R/G/B Gain
		R/G/B Offset	
	Blue Enable	(Enable/Disable)	
	DNR	0, 10, 20, ... 100	
	Gamma	2.0, 2.2 or 2.4	
	Baud Rate	115200, 19200, 9600 or 2400	
	Command Ack	(On/Off)	
Factory Reset			
Splash Duration	0, 1, 2, 3, ... 60 secs.		

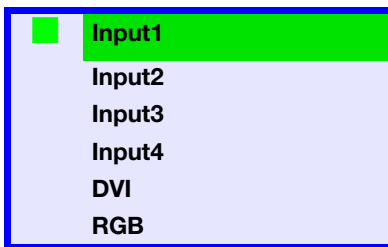
(not available on RGB input)

**F 4-1. DV OSD M S**

**Main Menu** ➤ The Main Menu is the starting point for accessing all DView functions.  
(The ISF Calibration menu is not accessible until you enter a passcode.)

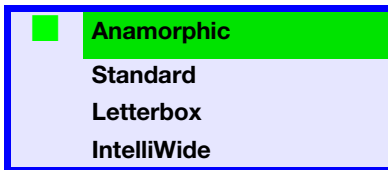


**Source** ➤ From the Main Menu, select Source to choose a video signal source.



The active source is indicated by a green square (■) to its left; in the example at left, TV is the active source.

**Aspect Ratio** ➤ To change the aspect ratio (size and shape) of the projected image, select Aspect Ratio from the Main Menu and press **ENTER**. Select the appropriate aspect ratio for the type of program material being viewed; refer to Table 4-1.




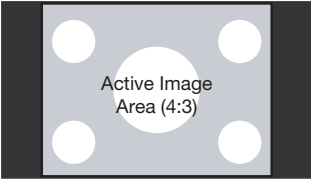

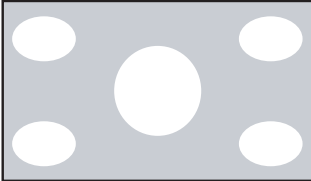
The currently-selected aspect ratio is indicated by a green square (■) to its left; in the example at left, Anamorphic is selected.



**Note**

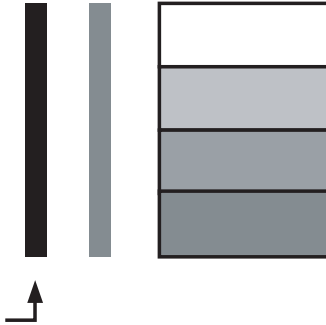
When you change the aspect ratio, the image will be distorted. To correct this, you must adjust the image. (The aspect ratio is not available for RGB input.) For more information, see page 33.

**T 4-1.A R S**

A R	R C K	D	
Anamorphic	ANA		<p>Select Anamorphic to view 16:9 DVDs and HDTV programs in their native aspect ratio. 4:3 images are stretched horizontally to fit a 16:9 screen.</p>
Standard	4X3		<p>Standard 4:3 scales the input signal to fit in the center of the 16:9 screen.</p> <p>4:3 is the aspect ratio used by computer monitors, standard television programming and most VHS video cassettes.</p>
Letterbox	LET BOX		<p>In Letterbox mode, the image is stretched vertically; the top and bottom portions are "blacked off."</p>
IntelliWide	I-WIDE		<p>A 4:3 image is horizontally scaled in a NON-linear fashion (more on the sides than in the center) to fit a 16x9 screen.</p>

*O, e a*

**B** : On your external test pattern source, select a PLUGE pattern. (PLUGE is an acronym for Picture Line-Up Generation Equipment.) Figure 4-2 shows a typical PLUGE pattern.



**F 4-2. T PLUGE P A B**

PLUGE patterns vary but generally consist of some combination of black, white and gray areas against a black background. The example above includes two vertical bars and four shaded boxes.

Select Brightness from the Picture Adjust menu. Using the left- and right-arrow ( ) buttons, adjust the brightness so that:

- The darkest black bars disappear into the background.
- The dark gray areas are barely visible.
- The lighter gray areas are clearly visible.
- The white areas are a comfortable level of true white.
- The image contains only black, gray and white (no color).





Select Color from the Picture Adjust menu. While looking at the color bar pattern through a blue filter, adjust the color saturation level until the outermost (gray and blue) color bars appear to be a single shade of blue:

← Tall c

**T**int or hue is essentially the ratio of red to green in the color portion of the image. When tint is decreased, the image appears redder; when it is increased the image appears greener. To set the tint, select Tint from the Picture Adjust menu. While looking at the color bar pattern through a blue filter, adjust the tint level until the cyan and magenta color bars (on either side of the green bar) appear to be a single shade of blue.

L e h e b g h e a d c a c , h e c a d c a e  
e a c e. A c h a g e e a e e a b e c h a g e h e h e  
d e a c h e e h e , e g.

**S** : Sharpness is the amount of high-frequency detail in the image. To adjust sharpness, select Sharpness from the Picture Adjust menu and press **ENTER**. On your external test pattern source, select a pattern like the one shown in Figure 4-5. Adjust as needed, looking for white edges around the transitions from black to gray and different sized lines in the sweep patterns at the top and bottom. Lower the sharpness setting to eliminate them.

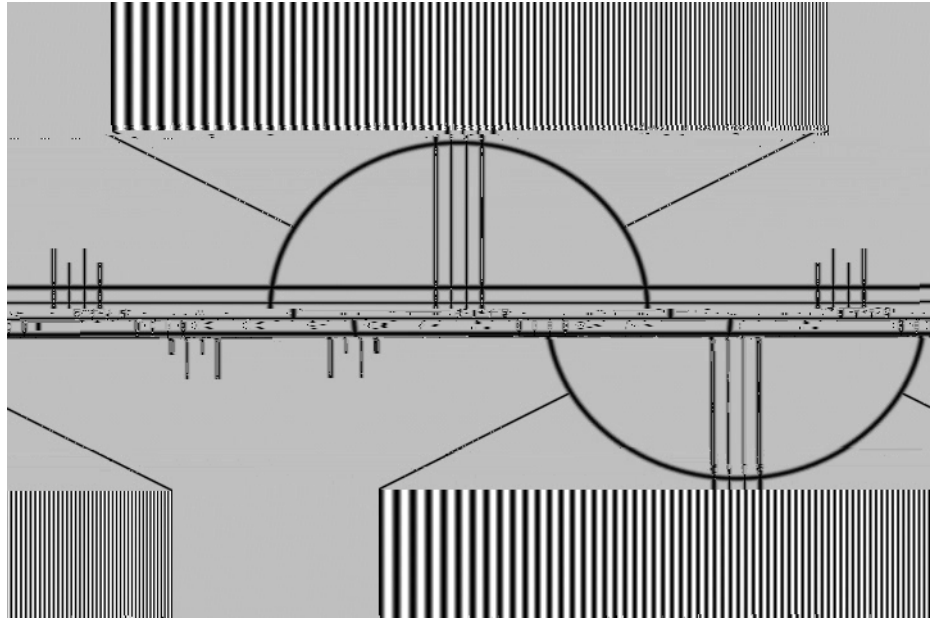


Figure 4-5. Test Pattern Adjust Sharpness

**C** : To adjust the color temperature, select Color Temp. from the Picture Adjust menu and press **ENTER**. (Color temperature defines the color of gray.) The choices are 5400K, 6500K, 8500K and Custom. The default setting, 6500K, is appropriate for most situations. Higher settings produce a bluer picture; lower ones impart a reddish hue to the image.

**B** : The Backlight control changes the apparent brightness of the displayed image. Its effect is similar to that of a lamp intensity control on a projector.

**Save Settings (RGB):** The DView lets you save image quality settings for each input and supported resolution to a preset. You can recall this preset at a later time by simply pressing a button on the remote control or using the Restore Settings menu command (see below).

You should save changes to any of the following settings to a preset; otherwise they will be lost when a new input source or resolution is selected:

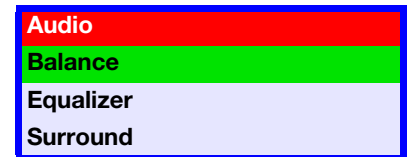
- Aspect ratio
- Brightness
- Contrast
- Color saturation
- Tint
- Sharpness
- Gamma
- Color temperature and white balance

**Restore Settings (RGB):** To recall a preset, choose Restore Settings from the Picture Adjust menu and select Custom, ISF Day or ISF Night. Or, use the corresponding buttons on the remote control.

To adjust the DView audio settings, select Audio from the Main Menu and press **ENTER**.

◀ **Audio**

**Balance:** To adjust the left/right speaker balance, select Balance from the Audio Menu and press **ENTER**. Use the left- and/or right-arrow buttons to make one channel louder than the other.



**Equalizer:** The DView has a five-band graphic equalizer that you can use to boost or cut certain audio frequencies. To use it, select Equalizer from the Audio menu and press **ENTER**. Select one of four equalizer presets -- Standard (flat), Music, Film or Speech -- or select Custom to create your own according to taste. The five frequency bands are 100, 300, 1000, 3000 and 10,000 Hertz (Hz).

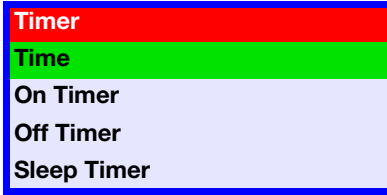
**Surround:** The DView has a surround sound mode that simulates a multi-channel sound system. To use the surround mode, select Surround from the Audio menu and set it to On.



**Note**

When the OSD is on, the OSD is hidden.

**Timer** ➤ To set the DView internal clock or configure the on/off timers, select Timer from the Main Menu and press **ENTER**.



**T** : To set the DView internal clock, select Time from the Timer menu and press **ENTER**. Use the up- or down-arrow button to select either the hour of the day or the minute of the hour to set. Then, use the left- or right-arrow buttons to set that component of the time. When finished, press **MENU**.

**O T** : Use the On Timer to turn the DView on at a specific time of day. You can also specify a volume level.

**O T** : Use the Off Timer to turn the DView off at a specific time of day.

**S T** : Use the Sleep Timer to turn off the DView after a specified interval.

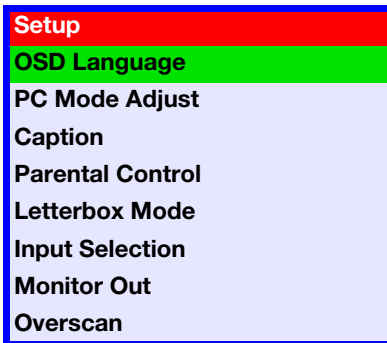
To set the Sleep Timer:

Select Sleep Timer from the Timer menu and press **ENTER**. Use the right- or left-arrow button to select 10, 30, 60, 120 or 180 minutes. Then, press **MENU**.

-- OR --

Press the **TIMER OFF** button on the remote control repeatedly to select the desired timer interval.

**Setup** ➤ Use the controls in the Setup menu to perform advanced image quality adjustments and access various other DView features.



**OSD L** : Select OSD Language from the Setup menu and press **ENTER**. Then, use the up- or down-arrow buttons to select the OSD language (English, French, Spanish, Portuguese or German). Press **ENTER** again to confirm your selection.

**PC M A** : To improve the quality of projected images from a computer or other VESA-compliant, RGB (480p or higher) source, select PC Mode Adjust and press **ENTER**.

**A A** : Auto Adjust automatically adjusts settings to optimize computer images. To execute Auto Adjust on command, select Auto Adjust and press **ENTER**.



**Note**

Auto Adjust automatically adjusts settings to optimize computer images. To execute Auto Adjust on command, select Auto Adjust and press **ENTER**.

**HP** : Use the up- or down-arrow buttons (▲, ▼) to highlight H Position. Then, use the right-arrow button (▶) to shift the image to the right; use the left-arrow button (◀) to shift the image to the left.

**VP** : Use the up- or down-arrow buttons (▲, ▼) to highlight V Position. Then, use the right-arrow button (▶) to shift the image up; use the left-arrow button (◀) to shift the image down.

**HS** : Use the up- or down-arrow buttons (▲, ▼) to highlight H Size. Then, use the right-arrow button (▶) to increase the width; use the left-arrow button (◀) to decrease it.

**P** : Adjust the phase if the image shows shimmer or horizontal noise. Pixel phase adjusts the phase of the pixel sampling clock relative to the incoming signal. The effect of this control is similar to that of a tracking control on a VCR.

For best results, use a good test pattern such as a smooth gray consisting of a clear pattern of black and white pixels, or a similar half on, half off graphic image. (You may notice that you can stabilize the image at more than one point. Use either setting in this case.)

To restore the factory-default Position, Size and Phase settings, select Factory Preset and press **ENTER**.

**Captions** : Select Caption from the Setup menu to control the display of closed captions when watching programs that contain them.

**Display** : Select On or Off to control the display of closed captions.

**Mode** : Select one of four captioning modes: CC1, CC2, CC3 or CC4. CC1 usually contains the native-language captions; if a program is captioned in more than one language, those captions are carried on CC2, CC3 or CC4.

The DView also supports text mode captioning; to use this feature, select Text1, Text2, Text3 or Text4. The text modes, instead of displaying a few lines of captions somewhere on the picture, take over all or half of the screen to display scrolling text information. (The text modes are seldom used today, so most of the time there is no information there to see.) The text field is sometimes used for embedding Internet data (called Interactive TV Links, or ITV Links) in the captions.

**CC On Mute** : To have the DView display captions when the audio output is muted, set this option to Yes.

**Parental Control** : To block the display of television programs or movies based on their ratings, select Parental Control from the Setup menu and press **ENTER**. Enter the default Personal Identification Number (PIN) -- **0000** -- and press **ENTER** again.

**Parental Lock** : This is the master switch for the parental controls. Set it to On or Off.

**TV Rating** : Select TV Rating from the Parental Control menu to block television programs carrying a given rating, to prevent children from watching programs that are deemed inappropriate. These ratings and content labels have been established by the United States Federal Communications Commission (FCC) to help parents and other caregivers determine if a program is suitable for young viewers.

To block programs carrying a given rating, use the up- or down-arrow to select a rating. Then, press the right-arrow button to require the PIN code to be entered to view a program with that rating. A lock icon (🔒) appears to indicate that the restriction is active.

Table 4-2 describes the TV ratings and content categories. For more information, visit [http://www.fcc.gov/parents/parent\\_guide.html](http://www.fcc.gov/parents/parent_guide.html).

**Table 4-2. FCC Ratings and Content Categories**

Rating / Code	Description
TV-MA	Mature Audience Only - graphic violence, explicit sexual content and/or offensive language.
TV-14	Parents strongly cautioned - intense violence, sexual situations, coarse language and/or suggestive dialogue.
TV-PG	Parental guidance suggested - violence, sexual situations, coarse language and/or suggestive dialogue.
TV-G	General audience - suitable for children and adults.
TV-Y7	Children 7 and up.
TV-Y	Suitable for all children.
FV	Fantasy violence or cartoon violence
D	Sexual dialogue
L	Offensive language
S	Sexual content
V	Violence

**Movie Rating:** Select Movie Rating from the Parental Control menu to block movies carrying a given rating, to prevent children from watching movies that are deemed inappropriate. These ratings have been established by the Motion Picture Association of America (MPAA) to help parents and other caregivers determine if a movie is suitable for young viewers.

To block movies carrying a given rating, press the right-arrow button to require the PIN code to be entered to view a movie with that rating. A lock icon (🔒) appears to indicate that the restriction is active.

For more information on movie ratings, please visit <http://www.mpa.org/movieratings/>.

**Unrated:** To allow or block access to unrated content, select Unrated from the Parental Control menu and select Allow or Block. Press **ENTER** to confirm your choice.

**Default PIN:** The default PIN for accessing the parental controls or bypassing content restrictions is **0000**. Vidikron recommends changing this to something less obvious.

**Letterbox Mode:** Select Letterbox Mode from the Setup menu to change the appearance of movies in Letterbox format.

When you select Standard, the original Letterbox format of the source is maintained. Black bars appear above and below the active image area.

When you select Cinema Fill, a 2.35 image is stretched vertically in both directions to fill a 16:9 display.

**I S** : Input 1 and Input 2 have both S-Video and composite video connectors. Input 3 and Input 4 have both component and composite video connectors.

To specify which connection type you are using -- or to switch from one to the other if equipment is connected to both -- select Input Selection from the Setup menu and press **ENTER**.

**M O** : If you have equipment connected to the MONITOR OUT, select Monitor Out from the Setup menu to route either the main or PIP audio/video signals to that output.

**O ( RGB )**: Overscan pushes the outside edge of the active picture area of the video signal out beyond the edge of the display area.

Some television programs are produced based on the assumption that older television sets may not display the outer edges of the broadcast picture area. Over scan effectively trims away these inactive, outer edges and enlarges the remaining portion of the image to fill the display area.

Use the on-screen slidebars to set the desired amount of horizontal and vertical overscan, as well as horizontal and vertical image shift.

These settings only affect 480i source material. For HDTV, DVDs and other video sources, Overscan is generally not necessary or desirable.

Use the ISF Calibration menu to perform advanced picture quality adjustments. **T**

**I** **I** **ISF-** **I** **z** **.**

◀ *ISF Calibration*

<b>ISF Calibration</b>
<b>Picture Adjust</b>
<b>White Balance</b>
<b>Blue Enable</b>
<b>DNR</b>
<b>Gamma</b>
<b>Baud Rate</b>
<b>Command Ack</b>
<b>Factory Reset</b>
<b>Splash Duration</b>



**Note**

*Y e e a, a c d e a c c e h e ISF Ca b a e .*

**P A** : The controls in this menu are identical to those in the main Picture Adjust menu, but are accessible only by entering the ISF Calibration menu passcode. This makes it possible to restore the picture quality settings to what they were when the DView was installed, simply by recalling the ISF Night or ISF Day preset.

- B** : Refer to **Brightness** on page 29.
- C z** : Refer to **Contrast** on page 30.
- C** : Refer to **Color Saturation** on page 30.
- T** : Refer to **Tint** on page 31.
- S z** : Refer to **Sharpness** on page 32.
- C T** . Refer to **Color Temperature** on page 32.
- Bz** : Refer to **Backlight** on page 32.

**S a S** : For each input and supported resolution, the DView lets you save image quality settings as presets that you can recall at a later time. You can create up to three presets -- designated Custom, ISF Day and ISF Night -- per input and resolution.

You should save changes to any of the following settings to a preset; otherwise they will be lost when a new input source or resolution is selected:

- Aspect ratio
- Brightness
- Contrast
- Color saturation
- Tint
- Sharpness
- Gamma
- Color temperature and white balance

To save image settings to a preset, select Save Settings from the ISF Calibration menu and select Custom, ISF Day or ISF Night.

White Balance		
R Gain		100
G Gain		100
B Gain		100
R Offset		50
G Offset		50
B Offset		50

**W B a z** : To remove any trace of color from the white areas of the projected image, choose White Balance from the Picture Adjust menu and press **ENTER**.

**G a** : Use the Gain controls to correct color imbalances in the bright areas of the image. A good way to do this is to use a test pattern consisting mostly of solid white areas, such as an 80 IRE window pattern. If the white areas contain traces of red, green or blue, decrease the Gain for that color.

**O** : Use the Offset controls in the White Balance sub-menu to correct color imbalances in the dark areas of the image. A good way to do this is to use a test pattern consisting mostly of dark gray areas, such as a 30 IRE window pattern. If the gray areas contain traces of red, green or blue, decrease the Offset for that color.



**Note**

A h e b a a c e a d e a e h e e a e a a c a e d  
 a a C c e , e a e .

**B E z** : Blue Enable removes all red and green color information from the image, simulating a blue filter. You can use it instead of a blue filter when performing color and tint adjustments.

**DNR:** To apply Digital Noise Reduction (DNR) to the input signal, select DNR from the ISF Calibration menu. Noise reduction is useful for clearing up noisy RGB images such as those from a PC. Adjust as desired using the left- or right-arrow buttons, keeping in mind that reducing noise (which reduces high frequencies) may also soften the image.

**G a z** The Gamma control determines how gray shades are displayed between minimum input (black) and maximum input (white) for all signals. A good gamma setting helps to optimize blacks and whites while ensuring smooth transitions for the in-between values utilized in other grays.

Unlike brightness and contrast controls, Gamma allows you to lighten or darken the overall tone of your images without changing the extremes. All images will be more vibrant while still showing good detail in dark areas.

The default Gamma setting of 2.2 is appropriate for most typical home theater environments.



---

**Ba d Ra :**

---

**4.5**  
**U P -I -P**  
**(PIP)**

To use PIP, press the **PIP** ( ) button.



The PIP window appears inside the main image window.

Press **PIP** again to switch to side-by-side PIP mode.

Press **PIP** again to turn PIP off.

Press the **TV/AV** button ( ) to select a PIP signal source. For each source, Table 4-3 shows which of the other sources are available as a PIP source.

**Table 4-3. Available PIP Sources**

PIP	INPUT 1	INPUT 2	INPUT3 VIDEO COMPONENT	INPUT4	PC
-----	---------	---------	------------------------	--------	----

To change the PIP window position, press the **POSITION** ( ) button on the remote control repeatedly until the window is in the desired position.

*Changing the PIP Position*

***Changing the PIP Size***

To change the PIP window size, press the **SIZE** ( ) button on the remote control repeatedly to achieve the desired window size.

***Changing the PIP Aspect Ratio***

To change the aspect ratio of the PIP window from 4:3 to 16:9 or vice versa, press the **ASPECT** ( ) button on the remote control.

---

To swap the main and PIP images, press the **SWAP** button on the remote control.

◀ *Swapping the Main and PIP Images*

To swap the main and PIP audio programs, press the **S.SWAP** button on the remote control.

*Swapping the Main and PIP Audio Programs*

**4.6**  
**S S M/SAP**

The DView supports Multichannel Television Sound (MTS), the broadcast audio standard that allows transmission of both stereo and Secondary Audio Program (SAP) content.

The SAP is usually a foreign-language translation. However, it can also be used for other purposes such as Described Video Services (DVS), which provide descriptive narration of key visual elements in programs for the benefit of the visually impaired.

You can select sound options (**M**, **S**, **SAP** or **M +SAP**) depending on the broadcast signal by pressing the **MTS/SAP** button on the remote control.

Choose **S** for channels that are broadcasting in stereo.

Choose **M** for channels that are broadcasting in mono, or if you are having difficulty receiving a stereo signal.

Choose **SAP** to listen to the Secondary Audio Program.

Choose **M +SAP** to listen to both the primary and secondary audio programs (for example, when a program has a DVS audio track).

Table 4-4 summarizes the audio broadcast modes supported by the DView.

**Table 4-4. C S M/SAP A M B**

Broadcast Mode	Remote Control			
	M	S	SAP	M +SAP
<b>M</b>	Mono	Mono	Mono	Mono
<b>S</b>	Mono	Stereo	Mono	Stereo
<b>M +SAP</b>	Mono	Mono	SAP	Mono+SAP
<b>S +SAP</b>	Mono	Stereo	SAP	Mono+SAP

# Maintenance

Table 5-1 provides some general guidelines for troubleshooting problems you may encounter with the DView. If you encounter an issue not described here, please contact your Vidikron dealer or Vidikron Technical Support.

5.1  
T

T

## Table 5-1.T

## Table

S	P	Cause ( )	S
The display does not turn on after initial installation.	The DView is not plugged in or the AC outlet is not active. The remote control batteries have run out.		Ensure that the DView is plugged in and that the AC outlet is active. Replace the batteries.
The display is on, but there is no picture or sound.	Incorrect source selection. Source component is not turned on. Source component is connected incorrectly or not at all.		Select the correct source. Turn on the source component. Check video and/or audio connections to source component.
Picture is okay, but there is no sound.	Audio output is muted. Volume setting is too low.		Press the <b>MUTE</b> button on the remote control. Turn up the volume.
Image is too bright and/or lacks definition in the bright areas of the image.	Contrast is set too high.		Lower the contrast setting.
Image appears washed out and/or dark areas appear too bright.	Brightness is set too high.		Lower the brightness setting.
Colors in the image are swapped; for example, reds appear blue or vice versa.	The Red/Pr, Green/Y or Blue/Pb outputs from the source are connected to the wrong inputs on the DView.		Ensure that the source outputs are connected to the correct DView input.
RGB-HD images appear noisy.	Clock and Phase settings need adjustment.		Manually adjust Clock and Phase settings, or perform an Auto-Adjust (refer to <i>PC Mode Adjust</i> on page 34).
Out of range appears on-screen.			

---

**N :**



6.1  
RS-1A2 6C



**T2 6-1.5 2 C 2 d ( d)**

C 2 d					D
			+	0401	Select Composite Video for Input4
			+	0403	Select Component Video for Input4
<i>E a , e:</i> [ S4F0101 selects Composite video for Input1					
[	+	S4G	+	000#	PIP Input selection 1=Input1 2=Input2 3=Input3 4=Input4 5=DVI 6=RGB
<i>E a , e:</i> [ S4G0004 selects Input4					
[	+	SAB	+	000#	Power on/off control 0=standby, 1=on
<i>E a , e:</i> [ SAB0001 turns unit on					
[	+	SBA	+	000#	Picture mode selection 0=Custom 1=ISF Night 2=ISF Day
<i>E a , e:</i> [ SBA0001 selects ISF Night					
[	+	SCA	+	000#	Caption on/off 0=off 1=on
<i>E a , e:</i> [ SCA0000 turns caption off					
[	+	SDA	+	000#	Set PIP mode 0=OFF 1=PIP 2=PBP
<i>E a , e:</i> [ SDA0002 selects PBP					
[	+	SDB	+	000#	Set PIP si e 0=small 1=medium 2=large
<i>E a , e:</i> [ SDB0001 selects medium PIP si e					

---

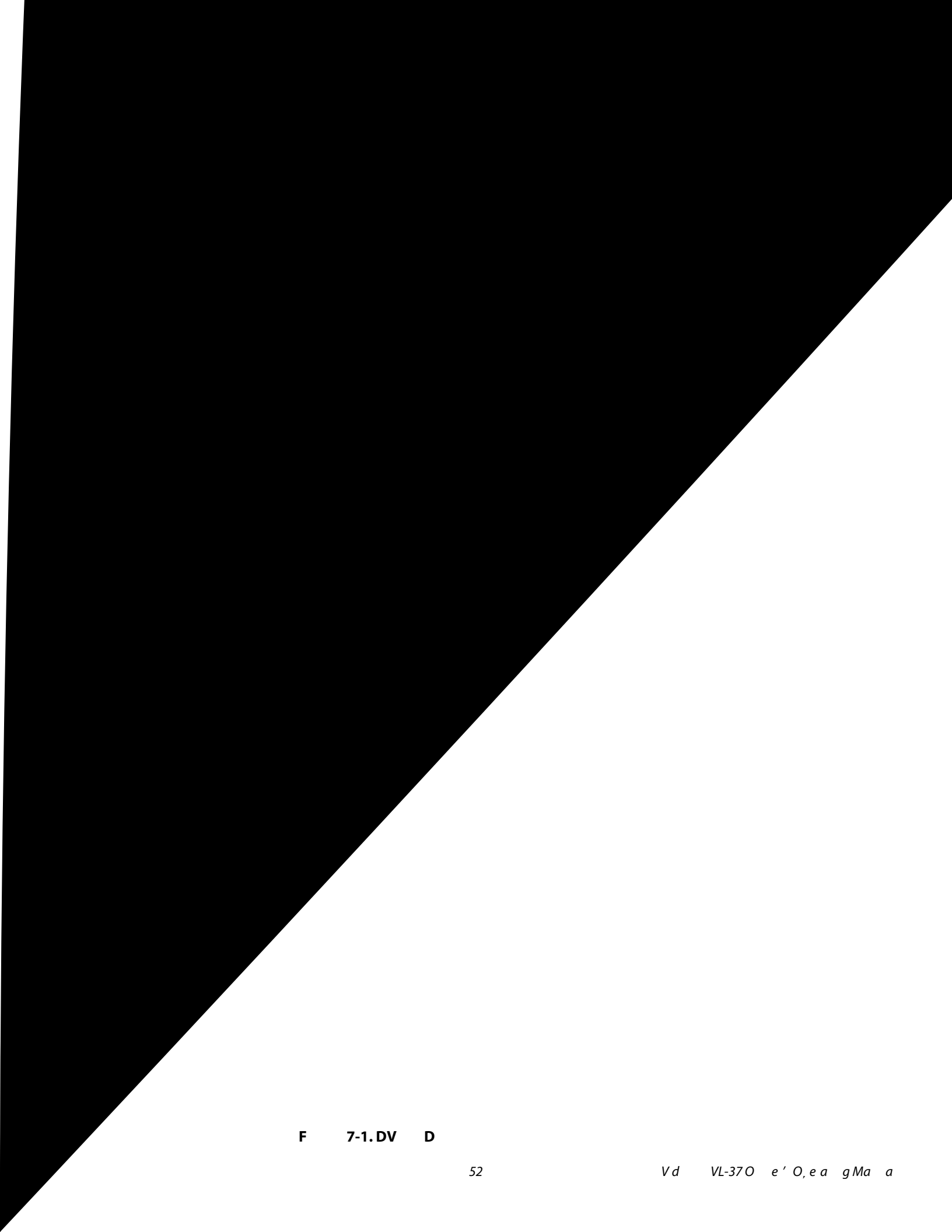
The following serial commands are meant to emulate buttons on the remote control. Each button has its own serial command. Effectively, it is as if you were using the IR remote, except that you'll be doing so via serial commands. These commands provide active OSD responses just like the IR remote.

Each command begins with `[key]` followed by the four-digit number of the button. No canDialog

---

**N :**





**F 7-1.DV D**

The DView can display video signals from a variety of computer sources via its RGB-HD and DVI inputs.

Table 7-2 lists the signal types that are compatible with the DView, and indicates which of those are VESA standards.

Signal Type	Resolution	Refresh Rate	Vertical Sync (V)	Horizontal Sync (H)
SD	720x240	60i	59.94	15.75
SD	720x480	60p	59.94	31.50
HD	1280x720	60p	60.00	44.90
HD	1920x1080	60i	60.00	33.70
VESA	720x400	85	85.00	37.90
VESA	720x350	85	85.00	37.90
IBM	720x400	70	70.10	31.50
IBM	720x350	70	70.10	31.50
VESA	720x480	60	59.94	31.50
MAC	720x480	67	66.70	35.00
VESA	720x480	72	72.80	37.80
VESA	720x480	75	75.00	37.50
VESA	720x480	85	85.00	43.60
VESA	800x600	56	56.25	35.20
VESA	800x600	60	60.30	37.90
VESA	800x600	72	72.20	48.70
VESA	800x600	75	75.00	46.90
VESA	800x600	85	85.10	53.70
MAC	832x624	75	74.50	49.70
VESA	1024x768	60	60.00	48.40
MAC	1024x768	60	60.00	48.70
VESA	1024x768	70	70.10	56.50
IBM	1024x768	72	72.10	57.50
VESA	1024x768	75	75.00	60.00
MAC	1024x768	75	75.00	60.00
VESA	1024x768	85	85.00	68.70

Note: The DView can be used to display video signals from a variety of computer sources via its RGB-HD and DVI inputs. The DView can display video signals from a variety of computer sources via its RGB-HD and DVI inputs. The DView can display video signals from a variety of computer sources via its RGB-HD and DVI inputs.

### 7.3 Video Sources

---

**N** :





