

DLP™ TV

HL-R4677W

46" Widescreen HDTV with Digital Cable Ready (DCR) Tuner



Shown with optional stand.

TV/VIDEO

- DLP™ (Digital Light Processing) TV
- Ultra Slim Bezel, Light-Weight Design – Fits Where Others Won't™
- Digital Cable Ready (DCR) with CableCARD™
- Built-In Analog/Digital Tuner (NTSC/ATSC)
- Samsung Cinema Smooth™ 720p Light Engine
 - Single Panel Digital Micro-Mirror Device (DMD) Design for a Crystal Clear Picture Without Any Possibility of Convergence Errors
 - 2000:1 Contrast Ratio
 - Whisper-Quiet Operation
- 1280 x 720p Digital Format Converter for All Inputs
- Samsung's Latest Generation DNie™ Video Enhancer
- Samsung's Cinema Smooth™ Film-Mode 3:2 Pull Down
- Anynet™ System Control Solution
- No Screen Aging or Burn-In Effects for Worry-Free Enjoyment

AUDIO

- 30-Watt Stereo Audio System with SRS TruSurround XT™

CONNECTIONS

- HDMI Input (High Definition Multimedia Interface)
- 2-Component Video Inputs (480i/480p/720p/1080i)
- 3 A/V Composite Inputs, 3 S-Video Inputs and A/V Output



Anynet

HDMI™
HIGH DEFINITION MULTIMEDIA INTERFACE



HIGH DEFINITION TELEVISION
HDTV

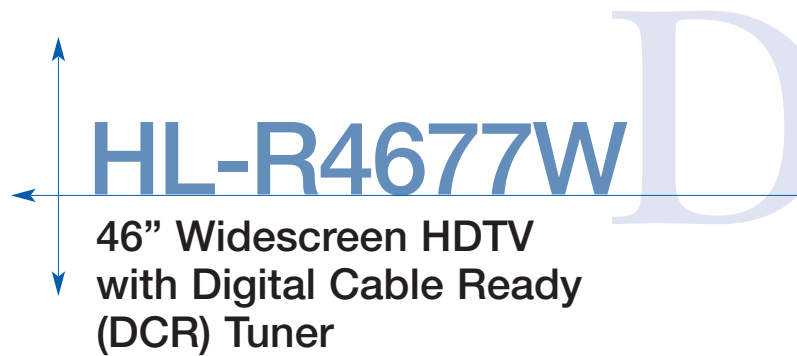
SRS (S)™
TruSurround XT



All features, specifications, and model numbers subject to change.
All on screen images are simulated pictures.

SAMSUNG

The HL-R4677W displays 46 inches of inviting wide-screen viewing area that is elegantly framed in an ultra slim bezel cabinet. Weighing less than 74 pounds and less than 17 inches deep, the HL-R4677W offers more viewing screen and less bulkiness. The secret to this engineering marvel - a compact digital projector powered by Emmy® Award-winning technology by Texas Instruments. A single, postage stamp sized Digital Micro-Mirror Device (DMD) that generates high definition video images is combined with Samsung's proprietary HD2 Plus optical engine - experiencing film-like video images with more color depth and true black levels that is sure to captivate the most discerning. The updated optical engine boosts 2000:1 contrast ratio resulting in improved low light video performance with a more film-like feel. Equipped with a host of advanced digital interfaces and video inputs, connectivity challenges and future proofing are a non-issue. Hang it, mount it, rest it on a stand or wall-unit, and simply move it anywhere anytime, its size and weight offers more placement possibilities over any other TV design. Finally, DLP™ TV by Samsung - fits where others won't.



HL-R4677W

46" Widescreen HDTV with Digital Cable Ready (DCR) Tuner

TV / VIDEO FEATURES

Integrated HDTV Tuner with the addition of a suitable VHF antenna delivers the world of free off-air DTV and HDTV local broadcast channels.

Digital Cable Ready (DCR) with CableCARD™: Use your TV remote control to enjoy the world of digital cable and HDTV. DCR with CableCARD™ means that your TV will receive the basic DTV and HDTV channels. Use your DLP™ TV by Samsung for everyday viewing; use the cable box for Video-On-Demand and other advanced cable features. Check with your local cable company for CableCARD™ compatibility and availability.

DLP™ Projection System DLP™ (Digital Light Processing) technology by Texas Instruments is the only display solution that enables projection systems to create a purely digital connection between a digital video or graphic source and the screen in front of you. While all other technologies are analog and compromise some image quality in translation, DLP™ projection unleashes the full potential of high quality video content.

Samsung DNle™ Video Enhancer or Digital Natural Image engine, enhances all analog NTSC and wideband video inputs for an overall improvement in picture quality. DNle™ by Samsung improves contrast, white level, picture detail and incorporates a digital noise reduction to improve lower quality video.

Automatic Digital Format Conversion System is compatible with 1080i and 720P HDTV formats, 480P and 480i SDTV formats. Samsung digital format conversion system will accept any DTV, Analog TV, or XGA computer RGB input. All video signals are converted to a 16x9 widescreen pixel count (1280 x 720 resolution) progressive display.

Next Generation DMD Enhancement offers the latest performance enhancement to the HD2 Plus optical engine. Texas Instrument's latest micro-display panel. Combined with Samsung's advanced light processing optics, the result is an overall stunning picture quality that is clear, bright and with outstanding contrast. Samsung's HDTV monitor televisions based on DLP™ technology will deliver a stunning picture quality that rivals any other display technology available today. On reliability, the Texas Instrument DMD panel is immune to the factors that can cause the performance of other display technologies - such

DLP™ TV



Remote Control

as cathode ray tubes (CRT), plasma display panels (PDP), liquid crystal display systems (LCD, LCoS, HTPS), and film to deteriorate with ongoing use. The DLP™ panel is insusceptible to the damaging effects of heat, humidity, vibration, and aging. Projection systems using DLP™ technology enable you to see the creator's original vision at full impact again and again, no matter how many times a video or graphic has been projected.

New Lamp, Just Like New Performance

No other technology can claim that a routine lamp replacement will result in like new performance since DLP technology doesn't age or degrade through time.

Single DMD Panel Design displays a bright clear high-definition picture without annoying focus, color aberrations and any possible convergence artifacts seen in display designs that incorporate multiple micro-display panels or multiple CRT's.

Samsung's Cinema Smooth™ Film Mode 3:2 Pull Down

correction circuitry senses motion found in unconverted 480i DVD video based on 24 fps film productions. Especially important when converting to a progressive video image, the result is an elimination of visible motion artifacts. This feature is by-passed on 480P, 720P and 1080i inputs.

3D Y/C Digital Comb Filter dramatically reduces edge image artifacts while improving transition detail.

2-Tuner PIP With Side-By-Side Split Screen enables convenient simultaneous viewing of two TV programs on the TV screen.

New Brighter HD Ultra-Fine Pitch Screen

(.155mm) further improves picture clarity especially when viewing higher definition video sources like DVD and HDTV. Text and fine details will appear sharper.

AUDIO

30-Watt Stereo Audio System and two way speaker system offers full range of high quality audio.

SRS TruSurround XT™ is a patented SRS technology that solves the problem of playing 5.1 multichannel content over two speakers. TruSurround delivers a compelling, virtual surround sound experience through any two-speaker playback system, including internal television speakers and headphones. It is fully compatible with all multichannel formats up to 6.1 channels.

CONVENIENCE FEATURES

Audio Mode Preset button on the set's remote enables 5 different modes for sports, movies, music, speech and custom settings.

Picture Format Size Adjustment can be programmed by video input for satisfying viewing choice. The ASPECT button on the remote control toggles the set's 5 options - Zoom 1, Zoom 2, Wide, Panorama and Normal Format. The TV will retain the last setting for each individual input.

Picture Mode Preset button on the set's remote enables 3 different video adjustments - standard, cinema, and dynamic settings. Note that the dynamic setting is intended for bright Dealer showrooms. The TV will retain the last setting for each individual input.

Cinema Picture Mode combined with warm 2 setting achieves a correct color temperature. Ideal for watching movies in dark rooms or low light.

Universal Remote Control permits control of the TV, DVD, VCR and a Tuner/Receiver.

Previous Channel returns to the previously viewed channel at the push of a button.

Trilingual On-Screen Displays in English, Spanish, and French.

Discrete IR Codes This set is equipped with discrete IR codes for use with a macro/programmable remote (see owners manual for details).

Anynet™ Control all your Samsung A/V components through a single TV remote with Samsung's Anynet™. Anynet™ is a network control solution for operating Samsung devices, allowing you to control key functions of the A/V devices connected to your TV via on screen menu. Many Samsung home theater components now feature Anynet™.

CONNECTIONS

HDMI (High-Definition Multimedia Interface)

addresses both pure digital audio and video performance and simplifies connections from the new generation set-top boxes and DVD players by reducing cable connections to one cable and plug.

Dual HDTV Component Video Inputs accommodate HD satellite receivers, HDTV tuners and HD cable boxes that feature component video outputs (Y, Pb, Pr). These inputs accept 480i, 480P, 720P and 1080i.

DLP™ TV

HL-R4677W

46" Widescreen HDTV with Digital Cable Ready (DCR) Tuner

SPECIFICATIONS

VIDEO

Display Device: Single 0.8 inch Digital Micro-Mirror Device

Pixel Count: 1280 Horizontal x 720 Vertical

6 Segment Color Wheel: 9,000 RPM

Contrast Ratio: 2000:1

Channel Coverage: VHF 2-13, UHF 14-69, CATV 1-125 (up to 181 pre-selected channels)

AUDIO

Output Power: 2 Channels x 15 Watts

Speaker System: 2 Way x 2 (left & right)

MTS Stereo

CONNECTIONS

ANALOG VIDEO

RF In: 2 Rear (See Diagram)

RF Out: 1 Rear

Composite Video Input: 3 (1 Side, 2 Rear)

Composite Video Out: 1 Rear

S-Video In: 3 (1 Side, 2 Rear)

Component Video Input (Y, Pb, Pr): 2 Rear (480i, 480p, 720p, 1080i)

ANALOG AUDIO

Analog L/R Input: 5 Sets (1 Side, 4 Rear)

Analog L/R Output: 1 Set (Rear)

DVI L/R Input: 1 Set (Rear)

DIGITAL

HDMI: 1 Rear (Digital Audio & Video)

QUALITY

Warranty: 1 year parts and labor warranty, including lamp, with in-home service backed by Samsung toll-free support. 1-800-SAMSUNG

Lamp Life: ~ 5,000 hours (100 Watts)

SUPPLIED ACCESSORIES

Instruction Book

Remote Control with 2 AAA Batteries

NET DIMENSIONS AND WEIGHT (WxHxD)

Monitor: 40.6" x 30.0" x 16.1"

Monitor Weight: 73.9 lbs.

SHIPPING INFORMATION (WxHxD)

Carton: 44.7" x 35.1" x 20.7"

Carton Weight: 94.8 lbs.

ORDER INFORMATION

UPC: 036725246034

Order Code: HLR4677WX/XAA

OPTIONAL STAND: (WxHxD) TR46L5S

Net Dimensions: 40.6" x 19.9" x 21.9"

Net Weight: 83.3 lbs.

Shipping Dimensions: 44.7" x 24.8" x 26.0"

Shipping Weight: 97 lbs.

UPC: 036725246812

Order Code: TR46L5SX/XAA

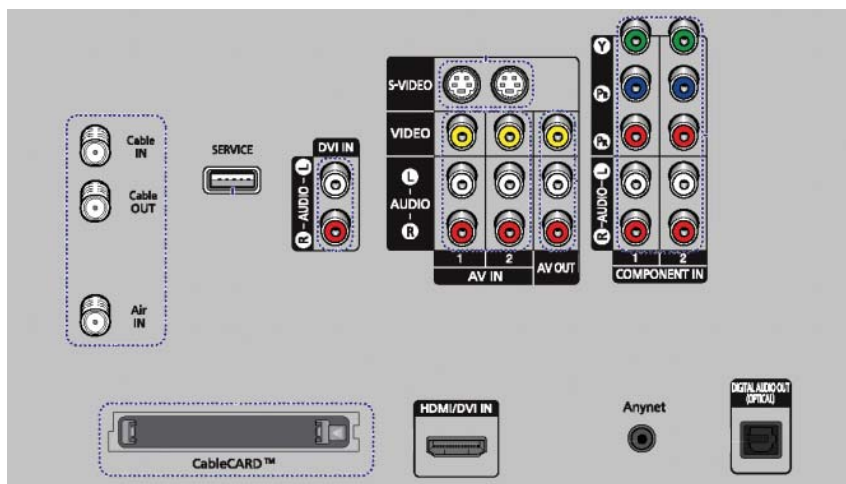
Design and specifications are subject to change without notice. Non-metric weights and measurements are approximate.

Digital Light Processing, Digital Micromirror Device, and DLP are trademarks of Texas Instruments. CableCARD is a trademark of Cable Television Laboratories, Inc. HDMI, the HDMI logo and High Definition Multimedia Interface are trademarks or registered trademarks of HDMI Licensing LLC. SRS TruSurround XT is a registered trademark of SRS Labs, Inc. Anynet™ and DNIe™ are trademarks of Samsung Electronics Co., Ltd. Emmy® and the Emmy® Statuette are registered trademarks of ©ATAS/NATAS

© 2005 Samsung Electronics America, Inc. Samsung is a registered trademark of Samsung Electronics Co., Ltd. All product and brand names are trademarks or registered trademarks of their respective companies.

305-SS Printed in USA.

For more information on digital TV technology please visit www.samsung.com/dtvguide



Jack Pack

Samsung Electronics America, Inc.
105 Challenger Road
Ridgefield Park, NJ 07660-0511
Tel (201) 229-4000 • 1-800-SAMSUNG
www.samsung.com