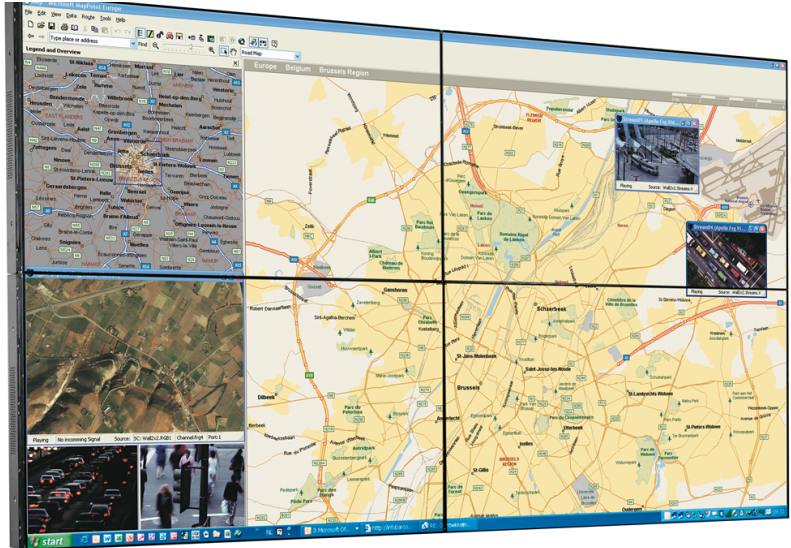


NSL-5521

55" full HD, LED-lit LCD display for video walls



Barco's NSL-5521, a 55" full HD LCD with LED backlights, combines high brightness and durable LED backlight technology with an extremely narrow bezel for excellent tiled visual performance.

As a tiled LCD solution, the NSL-5521 is ideal for personal wall environments and adjunct control rooms in Emergency Operations Centers, traffic management and surveillance centers, C4I-SR environments, utilities and process control centers and broadcast & telecom monitoring applications.

Narrow-bezel display for tiled video walls

The new NSL uses durable LED backlights positioned directly behind the LCD panel and has the narrowest bezel on the market, resulting in excellent tiled visual performance.

Durable and bright

The NSL-5521 offers the best image quality around in terms of resolution, brightness and viewing angle. Because LED backlights reduce burn-in and colorations in the LCD filters and polarizers, the NSL-5521 has a long panel life, which makes the display cube perfectly suited for long-term usage.

Tiled LCD technology – the right choice for your control room:

- Unlike front projection, tiled LCDs require less maintenance costs, have a better contrast ratio and are not influenced by ambient light.
- Unlike plasma technology, tiled LCDs require less power consumption and are not subject to permanent, irreversible burn-in.
- Unlike normal-bezel LCD displays, tiled LCDs offer more scalability, minimize bezel distraction and allow optimal usability of the screen surface with high resolution.
- Unlike lamp-based LCD displays, tiled LCDs with LED backlights offer more brightness, optimal image quality and a high life expectancy.

BARCO

Visibly yours

Technical specifications

LCD technology	S-PVA, normally black,DID technology for extensive usage,AIR Anti Image Retention circuitry
Resolution	Full HD (1920 x 1080)
Backlight	Direct LED
Aspect Ratio	16:9
Pixel density	40 dpi
Refresh rate	60 Hz
Luminance	700 cd/m2 (max)
Contrast	3500:1 (typ.)
Viewing angle	H 178° V 178°
White point	10,000 K
Color	10 bits - 1.07 B colors
Precision	Internal 10 bit processing for precise color calibration
Backlight lifetime	50,000 h
MTBF	> 100,000 h
Active screen diagonal	55" (1396 mm)
Dimensions	1215.3 x 686.1 x 98.2 mm 47.85" x 27.01" x 3.87"
Active screen area	1210 mm x 680 mm 47.63" x 26.79"
Bezel width	Right, bottom: 1.9 mm 0.075" Left, top: 3.8 mm 0.15"
Weight	35 77.3 lbs(net)48.5 107.1 lbs (gross)
Cooling	Low noise fans
AC input voltage	100-240 VAC, 60-50 Hz
Power consumption	300 W (max) 130 W (typ) 20 W (sleep) 2.5 W (stdby)
Heat dissipation	1023 BTU/h (max)
VGA	Separate sync DSUB-15P in/out
DVI	Single link DVI-D in/out with HDCP
Display port	Display port input (Out via DVI)
HDMI	HDMI Type A with HDCP (Out via DVI)
CVBS	BNC in/out
S-video	Mini-DIN S-terminal in/out
Barco NSL control manager	Server connected via RS232 chain Remote client application: on/off, wall setup, source selection, status, brightness, contrast and color adjustments
Component video	3xBNC in/out
control signal	RS-232 DSUB9 PIN in/out
Operating humidity	20-80% non-condensing
Operational temperature	0-40°C
Regulation Compliance	CE, TÜV, cTÜVus, CCC, ROHS, WEEE
Storage humidity	10-90% non-condensing
Storage temperature	-20-60°C

Generated on: 11 Jul 2012
 Technical specifications are subject to change without prior notice.
 Please check www.barco.com for the latest information.

BARCO

Visibly yours