

SONY®

KDL-32/42XBR950



- Sony's WEGA™ Engine System
- Direct Digital Circuitry
- Digital Reality Creation® circuitry
- MID@X circuitry
- Sony's LCD Panel Driver LSI
- Movies will always look their best with CineMotion® technology
- Built-in ATSC/QAM
- Elegant, floating glass panel design enhances any living space
- Get deeper black's with Sony's Contrast Enhancer
- View your images with Advanced Memory Stick® media

TruSurround™
with SRS (●)®

MID Multi
Image
Driver

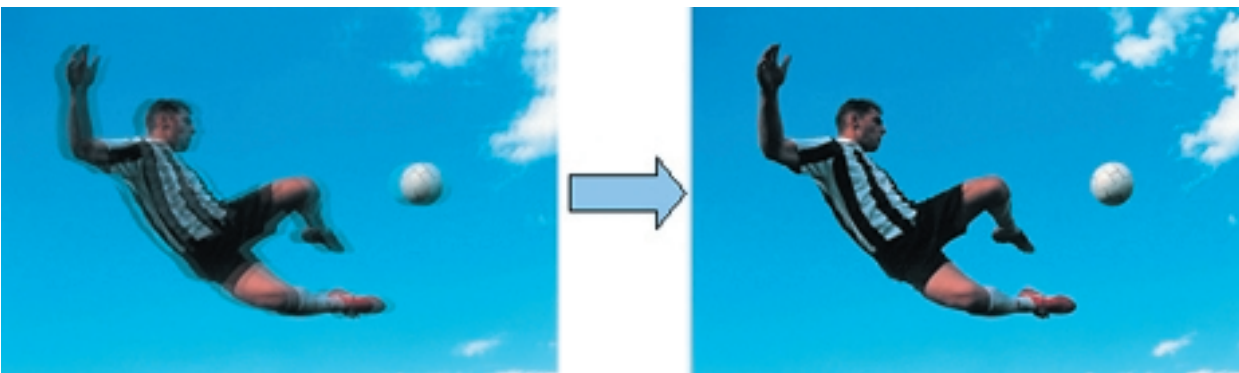
DRC Digital
Reality
Creation

WEGA ENGINE

MEMORY STICK

CineMotion
reverse 3-2 pull down technology

HDTV
HIGH-DEFINITION TELEVISION



The WEGA Engine™ System Sony's proprietary WEGA Engine system maintains the picture in the digital domain from the first stage to the last - end-to-end digital accuracy to deliver superb picture quality from any video source. Direct Digital Circuitry (DDC) increases the signal to noise ratio before it passes through to the DRC® circuit. DRC® Digital Reality Creation® MultiFunction V1 Circuitry raises standard definition signals to HD quality to display clear, stable images from any video source. MID®-X Multi Image Driver Circuitry scales all incoming standard and high definition signals to the configuration of the panel without degrading signal quality, and provides Twin-View™ picture-and-picture features. DCP Digital Component Processor fine-tunes the signal to improve overall contrast and sharpness before the image is displayed.

LCD Panel Driver LSI minimizes motion blur caused the response time lag of LCD panels by improving the response time in the middle luminance range resulting in smoother images on the screen.

KDL-32/42XBR950

Features

Video

- High Resolution Plasma TV
- Built-in NTSC TV Tuners (2)
- Built-in ATSC TV Tuner (1)
- Built-in Stereo Speakers
- Panel System: LCD Display
- Screen Size (Diagonally):
KDL-42XBR950 = 42 inches
KDL-32XBR950 = 32 inches
- Display Resolution:
KDL-42XBR950 = 1366 x 768
KDL-32XBR950 = 1280 x 768
- Antenna: 75 Ohm External
- TV System: (Media Box) NTSC America TV Tuner
- Channel Coverage: VHF 2 - 13
UHF 14 - 69
CATV 1 - 999
ATSC 1 - 99
- Advanced WEGA Engine™ System
- DRC® MultiFunction Circuitry
- CineMotion® Reverse 3-2 Pulldown Technology
- Multi-Image Driver (MID® X)
- DVI-HDTV Interface
- Steady Sound® Auto Volume Control
- Input Signals: 480i, 480p, 1080i, 720p
- Color Temperature Adjustment
- Auto Wide/Wide Screen Modes
- Monitor Output
- Closed Caption (CC)
- Multiple Language (3) On-Screen Display (English, French and Spanish)
- Auto Channel Program
- Channel Skip/Add
- Clock/Timer (Two Event)
- Favorite Channel
- Program Palette™ Presets
- Sleep Timer
- V Chip Parental Control

Audio

- 2 Way Passive Radiator Speaker System
- TruSurround® Sound Effect
- Audio Power: 15Wx2 (30W)

Specifications

General

- Power Requirements AC120V, 60Hz
- Power Consumption (Standby - Tentative) System Total: 1.5 Watts
i.LINK® interface Standby 22W (Energy Star Compliant)
- Power Consumption (In Operation

Tentative) KDL-42XBR950: 240W;
KDL-32XBR950: 150W
Media Receiver: 53W

DVI-HDTV interface. Not compatible with all digital connections.

Supplied Accessories

- Instruction Manual
- Preprogrammable Remote Control RM-Y1000
- Batteries (2)
- 75 ohm Coaxial Cable
- Display Interface Cable
- Table Stand (32" Only)

Optional Accessories

- 10M Display Interface Cable VMC-P10
- Wall Mount Bracket: SU-LW1 (32" only); SU-PW2 (42" only)

Weights & Measures

- KDL-32XBR950: With Stand: 63.71 lbs. (28.9kg) Without Stand: 48.72 lbs. (22.1kg) Media Receiver Unit: 14.33 lbs. (6.5kg)
- KDL-42XBR950: TBD Without Stand: 66.14 lbs. (30kg) Media Receiver Unit: 14.33 lbs. (6.5kg)
- KDL-32XBR950: with stand: 41.42" x 25" x 9.02" (1052 x 635 x 229mm) without stand: 41.42" x 22.4" x 3.82" (1052 x 569 x 97mm) media receiver unit: 21.65" x 20.7" x 9.13"
- KDL-42XBR950: with stand: TBD without stand: 53.11" x 27.32" x 4.02" (1349 x 694 x 102mm) media receiver unit: 21.65" x 20.7" x 9.13"

UPC Codes

- TBD

©2004 Sony Electronics Inc. All rights reserved. Features and specifications are subject to change without notice. All trademarks referenced herein are trademarks of Sony or their respective owners.
*All Sony digital still cameras and camcorders except models DSCD-700, DSCD-770, DCR-TRV900 and DSR-PD100A store images on a Memory Stick in the DCF file format, which is required for playback on these projectors. If the image file is renamed or manipulated, the DCF file format must be restored before playback is possible. Images captured on all other digital still cameras and camcorders will need to be formatted on a PC to the DCF file format (with third party software not supplied with the projector) before they can be viewed.
**HDTV reception requires outboard receiver, not included. Works through analog component video (Y/Pb/Pr) connections and

SONY®

Sony Electronics Inc.
1 Sony Drive
Park Ridge, NJ 07656
For more information:

<http://www.sony.com/dn>