

37" LCD Television
LT-3725



Large screen impact and style to enhance any home environment

Product Features

- 37" Widescreen (16:9) LCD TV
- TV reception is provided via built-in ATSC, Clear-QAM and NTSC tuner
- HDMI input delivers uncompressed, crystal-clear digital video & audio via a single cable
- SRS creates a virtual surround sound experience from the internal speakers
- HD Panel Resolution (1366 x 768)
- High Brightness (500 Cd/m²)
- High Contrast Ratio (1000:1)
- Wide Viewing Angle (176° H / 176° V)
- Component video, S-video and Composite video inputs
- MTS, SAP, Closed Caption & V-Chip

37" LCD Television

LT-3725

Product Specifications

Video

Type		37" TFT-LCD
Aspect Ratio		16:9
Signal Compatability		480i, 480p, 720p, 1080i
Panel Resolution		1366 x 768
Display Area		819.6mm x 460.8mm
Pixel Pitch		.60mm x .60mm
Number of Colors		16.7 million
Viewing Angle (H/V)		176° / 176°
Peak Brightness(cd/m ²)		500
Contrast Ratio		1000:1
Response Time		8ms
Built-in Tuner		ATSC / Clear-QAM / NTSC

Audio

Speaker Power		10W x 2
MTS/SAP		Yes

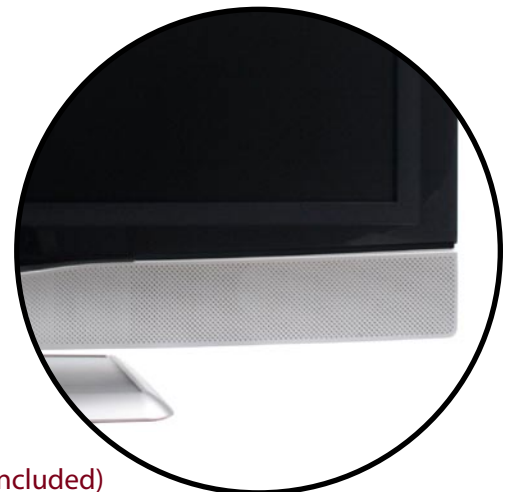
Connections

RF Antenna Input		1
Headphone Output		1
Composite Video Input(Rear/Side)		1/1
Composite Audio/Video Output		1
Component Video Input		2
S-Video Input (Rear/Side)		1/1
HDMI (with HDCP)		1
PC Input (with audio input)		1
Audio (L/R) Inputs		4
Digital Audio Outputs (SPDIF)		Coaxial

General

On-Screen Menu Languages		English/French/Spanish
Power Supply		AC 100V-240V 50/60Hz
Dimensions with stand		(W) 37.4"x(H) 27.3"x(D) 11.2"
Dimensions without stand		(W) 37.4"x(H) 25.4"x(D) 5.3"
Unit Weight		49.5 lbs.
Wall Mount		VESA 400mm x 200mm (Not Included)
Other		Progressive Scan, Parental Control, Sleep Timer

UPC# TBD



Norcent is a registered trademark of Norcent Technology Inc. (2005)
550 Cliffside Drive, San Dimas, CA 91773
All rights reserved.

HDMI logo and High-Definition Multimedia Interface are trademarks or registered trademarks of HDMI Licensing LLC.
SRS is a registered trademark of SRS, Inc.

All product information is accurate to the best of our knowledge at the time of publication.