

**55" LCD MONITOR**  
**MDT551S**

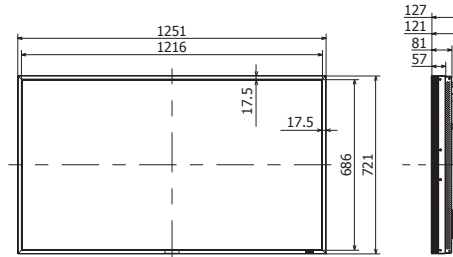
- SLIM EYE-CATCHING BEZEL DESIGN
- ADVANCED HIGH-DEFINITION DIGITAL SIGNAGE DISPLAY
- FULL 1920 X 1080 NATIVE RESOLUTION
- OPTIONAL CAT5 TRANSMITTER AND RECEIVER
- OPS COMPATIBLE, INPUT SLOT
- RJ45 PORT FOR NETWORKED CONTROL
- FRONT AND REAR AMBIENT LIGHT SENSORS
- CLOSED CAPTION SUPPORT

LEADING THE EVOLUTION OF  
**HIGH-DEFINITION**  
DIGITAL SIGNAGE

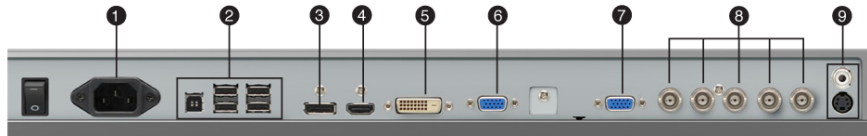


# 55" LCD MONITOR

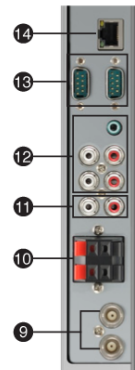
# MDT551S



## MULTIPLE STANDARD INPUT AND OUTPUT CONNECTORS



- ❶ Power in (3-pin, with earth terminal)
- ❷ USB hub
- ❸ RGB 6 in (DisplayPort)
- ❹ RGB 1 in (HDMI)
- ❺ RGB 2 in (DVI-D)
- ❻ RGB 3 in (mini D-sub 15-pin)
- ❼ RGB out (mini D-sub 15-pin)
- ❽ RGB 4 in DVD/HD in (BNC)
- ❾ Video I/O (BNC/S, RCA connectors)
- ❿ External speaker terminals
- ⓫ Audio out (RCA)
- ⓬ Audio in 1, 2, 3
- ⓭ RS-232C (D-sub 9-pin)
- ⓮ LAN connector
- ⓯ Option slot



Optional CAT5 Transmitter Box:  
DP-2CA5-T  
Optional CAT5 Receiver Box:  
DP-2CA5-R  
Optional SDI Input Box:  
DP-1SDI-3G

<b>CLASS</b>	55" (Diagonal) LCD Monitor
<b>VIEWABLE IMAGE SIZE</b>	47.6 x 26.8"
<b>ORIENTATION</b>	Landscape / Portrait / Face-up
<b>BRIGHTNESS</b>	700 cd/m <sup>2</sup>
<b>PIXEL PITCH</b>	0.630 mm
<b>CONTRAST RATIO</b>	1300:1
<b>DIMENSIONS (W x H x D in.)</b>	49.3 x 28.4 x 5.0"
<b>WEIGHT</b>	81.7 lbs
<b>BEZEL WIDTH</b>	0.63"
<b>RESPONSE TIME</b>	10 ms (gray to gray)
<b>VIEWING ANGLE</b>	Horizontal and vertical: 178°
<b>VIDEO/AUDIO INPUTS AND OUTPUTS</b>	mini D-Sub 15 pin In/Out, HDMI, DVI-D, DisplayPort, CAT5 In/Out (optional), 5 BNC (Component) In, S-Video, Composite (BNC In/Out), 2 x Audio L/R (RCA), Audio Stereo mini jack, RS-232C, LAN, 5 x USB (1 upstream/4 downstream)
<b>SPEAKER OUTPUT</b>	External speaker jack
<b>CONTROL INPUT/OUTPUT</b>	RS232C (D-Sub 9 In/Out), LAN
<b>POWER CONSUMPTION</b>	Max.: 316W (293W w/o speakers) Factory default setting: 202W
<b>ESTIMATED BACKLIGHT LIFE</b>	Up to 50,000 hours*
<b>AUDIO SPEAKER</b>	Built-in Rear Facing. Side Mount Optional Speakers: SPI-551S
<b>TABLE STAND</b>	Optional: ST-461V
<b>WALL MOUNT COMPATABILITY</b>	8-M8 Screws holes (200mm (7.9") pitches) for monitor mount
<b>WARRANTY</b>	3-years parts and labor, Express Replacement Assistance, toll-free 24x7 technical support

\*Results may vary depending on usage and operating environment.

Specifications subject to change without notice.